



9 Milton Park Avenue, Southsea

Offers in Region of £450,000

 chinneckshaw



9 Milton Park Avenue

Southsea

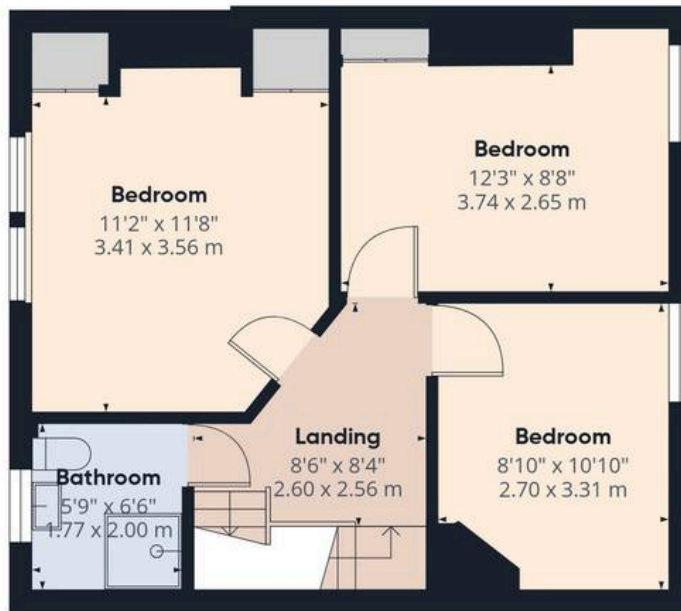
This beautifully presented four-bedroom end-of-terrace home offers spacious and versatile accommodation ideal for modern family living. At the heart of the property is a fantastic open-plan kitchen, dining and living area, creating a sociable space perfect for everyday life, entertaining and relaxing. The well-equipped kitchen provides ample storage and workspace, while the flexible layout allows room for both dining and comfortable seating areas. With four well-proportioned bedrooms and two bathrooms, the home is perfectly suited to growing families, home workers or buyers seeking extra space. The thoughtful layout combines practicality with comfort, ensuring the property can adapt to changing needs over time. Outside, the end-of-terrace position provides added privacy, while the detached garage offers secure parking and useful storage. Conveniently located close to Milton Park, local amenities, schools and transport links, this fantastic property offers an excellent combination of space, convenience and modern living.

Material Information • Tenure: Freehold • Council Tax: Band C • Electricity: Mains Supply • Heating: Gas • Water Supply: Mains Supply • Sewage: Mains Supply • Broadband: Standard, Superfast and Ultrafast Fibre are all available in this area • Parking: Garage & On Street • Mobile: Ofcom official website checker states that EE, Vodafone, O2 and Three available in the area • Flood Risk: Low Risk





Ground Floor



Floor 1



Landing
2'6" x 2'8"
0.76 x 0.82 m

Floor 2



Approximate total area⁽¹⁾

1415 ft²

131.6 m²

Reduced headroom

9 ft²

0.9 m²

(1) Excluding balconies and terraces

Reduced headroom

----- Below 5 ft/1.5 m

Calculations reference the RICS IPMS 3C standard. Measurements are approximate and not to scale. This floor plan is intended for illustration only.

GIRAFFE360



Chinneck Shaw

Bridge House, Milton Road, Portsmouth – PO3 6AN

023 9282 6731

hello@chinneckshaw.co.uk

www.chinneckshaw.co.uk/

Chinneck Shaw, Bridge House, Milton Road, PO3 6AN Consumer Protection from Unfair Trading Regulations 2008: These details are for guidance only and complete accuracy cannot be guaranteed. If there is any point which is of particular importance, verification should be obtained. The do not constitute a contract or part of a contract. All measurements are approximate. No guarantee can be given with regard to planning permissions or fitness for purpose. No apparatus, equipment, fixture or fitting has been tested. Items shown in the photographs are NOT necessarily included. Interested Parties are advised to check availability and make an appointment to view before travelling to see a property.