



2 Nelson Road, Ashford, TW15 3QT

£425,000



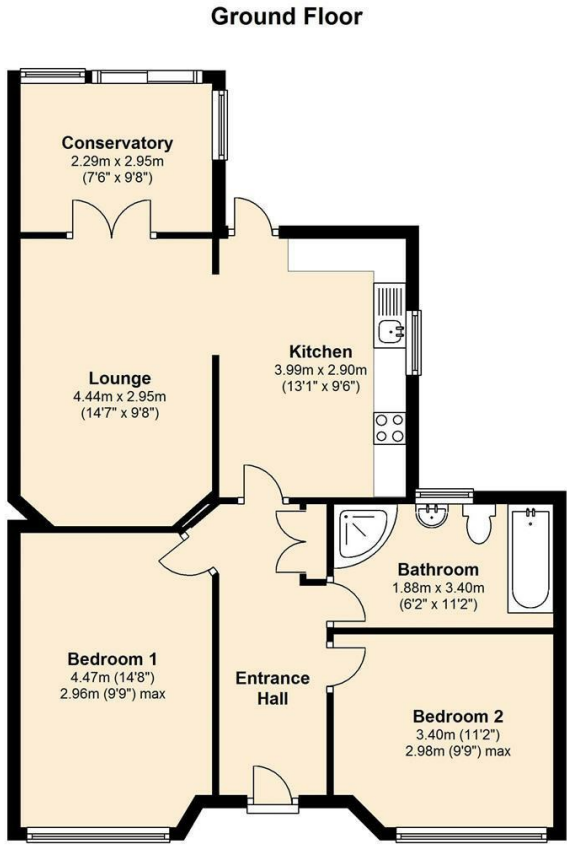
## 2 Nelson Road, Ashford, TW15 3QT

**OFFERS INVITED - NO ONWARD CHAIN!** This well-presented and spacious two double bedroom semi-detached bungalow offers an excellent opportunity for buyers seeking comfort, convenience, and potential. Situated just a short walk from the station, town centre, and the scenic Fordbridge Park, the property is ideally located for both commuters and those who enjoy local amenities and green spaces. Internally, the bungalow features a generous kitchen, a bright and airy conservatory, and two well-proportioned double bedrooms, providing ample living space for a small family, downsizers, or professionals alike.

Externally, the property benefits from a large private driveway offering plenty of off-street parking, as well as convenient side access to the rear garden. With the added bonus of potential to extend into the loft (subject to planning permission), this home presents a fantastic opportunity to add value and tailor the space to your needs. Sensibly priced for a prompt sale, this attractive bungalow combines comfort, location, and future potential, making it a must-see. Call Alex White and his market leading sales team at Aspen estate agents.



Floor Plan



Features

- Semi-Detached Bungalow
- Close to station
- Kitchen/Breakfast Room
- Large own driveway
- 2 Double Bedrooms
- Close to town centre
- Large Bathroom with Shower





