



**Guide Price**  
**£450,000**

**Freehold**

4x  2x  2x 

**Orgarswick Avenue,  
Dymchurch, Kent, TN29**

**OVER 60?**

Secure this property  
for up to **59% less!**

*Wards*  
Helping you move forwards





## Main features

- No onward chain so a quick sale is available
- Bright and airy accommodation
- En-suite shower to principle bedroom
- Separate lounge and dining area
- Conservatory to enjoy the garden all year round

## Accommodation

### GROUND FLOOR

Porch  
 Entrance Hall  
 Lounge: 13'7 x 12'9 (4.14m x 3.89m)  
 Conservatory: 12'5 x 9'11 (3.79m x 3.02m)  
 Kitchen: 14'5 x 10'8 (4.40m x 3.25m)  
 Dining Area: 11'9 x 10'5 (3.58m x 3.18m)  
 Inner Hall  
 Utility Area: 5'8 x 5'6 (1.73m x 1.68m)  
 Separate Toilet  
 Bedroom 1: 18'9 x 11'8 (5.72m x 3.56m)  
 En-Suite Shower Room

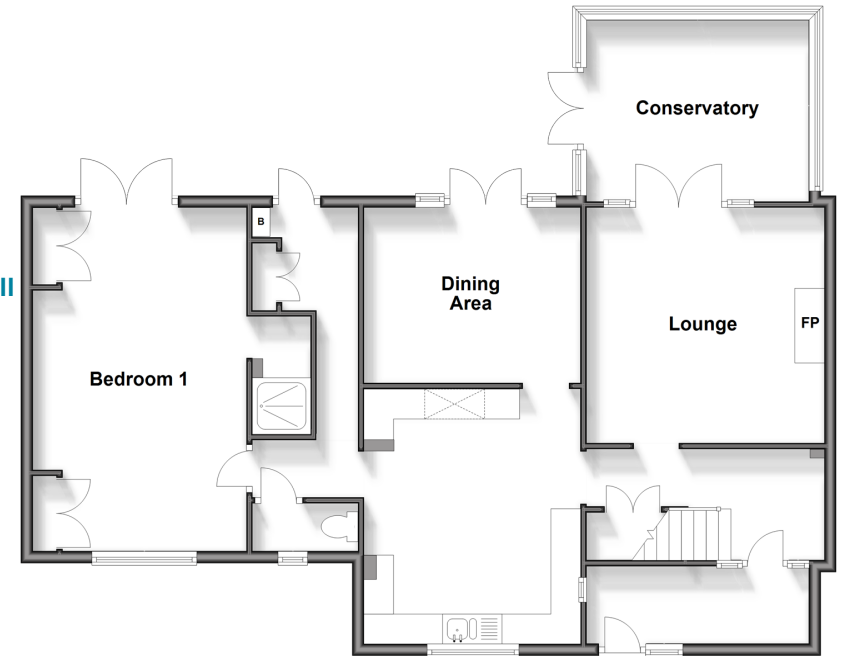
### FIRST FLOOR

Landing  
 Bedroom 2: 12'8 x 11'9 (3.86m x 3.58m)  
 Bedroom 3: 13'0 x 10'4 (3.97m x 3.15m)  
 Bedroom 4: 9'7 x 8'7 (2.92m x 2.62m)  
 Bathroom

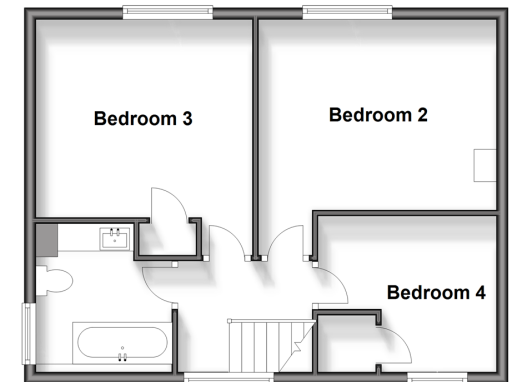
### OUTSIDE

Off Road Parking  
 Front & Rear Gardens  
 Summer House  
 Hot Tub

**Ground Floor**  
 Approx. 100.3 sq. metres (1079.6 sq. feet)



**First Floor**  
 Approx. 45.9 sq. metres (493.8 sq. feet)



**Call New Romney - 01797 363745 ■ [wardsof Kent.co.uk](http://wardsof Kent.co.uk)**

- Legal advice should be taken to verify fixtures/fittings, planning, alterations and/or lease details
- Appliances & services are untested, dimensions are approximate and floor plans are not to scale
- Through a Homewise Home For Life Plan people aged 60+ can secure this property for up to 59% less, by purchasing a Lifetime Lease.

