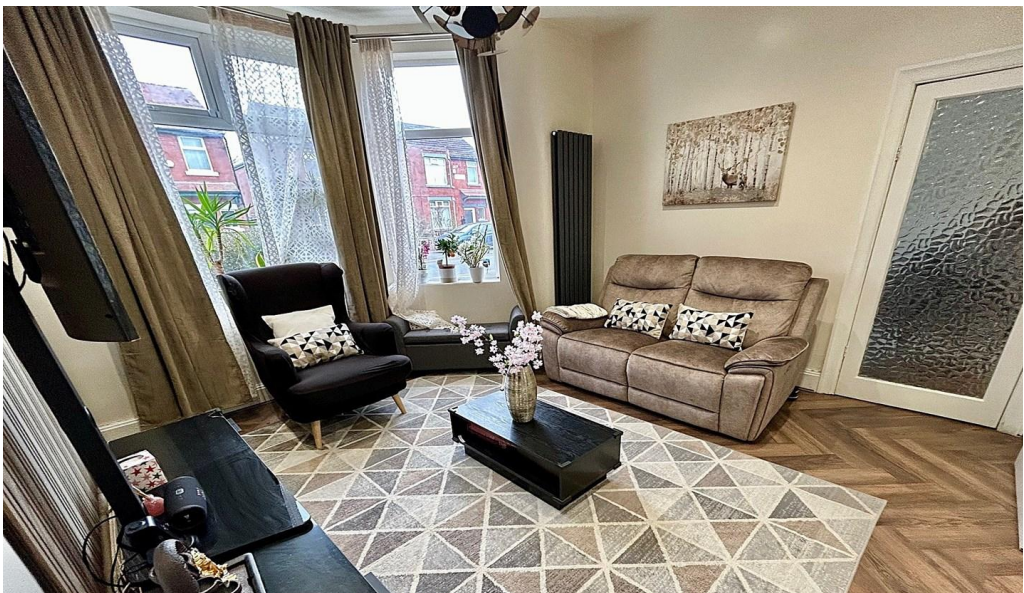




**GASCOIGNE
HALMAN**

Barnsfold Avenue, Fallowfield
£375,000.00

THE AREA'S LEADING ESTATE AGENCY



An immaculately presented and spacious, bay fronted period semi detached property located on a quiet yet desirable road and only moments from local amenities and excellent transport links. Having recently undergone refurbishment and renovation to include a full re-wire in 2023/2024 the property is ready for any buyer to move straight in to. The property also offers huge potential to extend (STPP).

Property details

- A Stunning and Well-Presented Period Semi Detached Property
- Undergone Major Renovation and Refurbishment by the Current Owner
- Bay Fronted Living Room, Large Dining Room and Modern Fitted Kitchen
- Three Good Sized Double Bedrooms and a Stylish Three-Piece Bathroom Suite
- Off Road Parking and a Landscaped, Private Westerly Facing Garden
- Close to Local Amenities and Excellent Transport Links



About this property

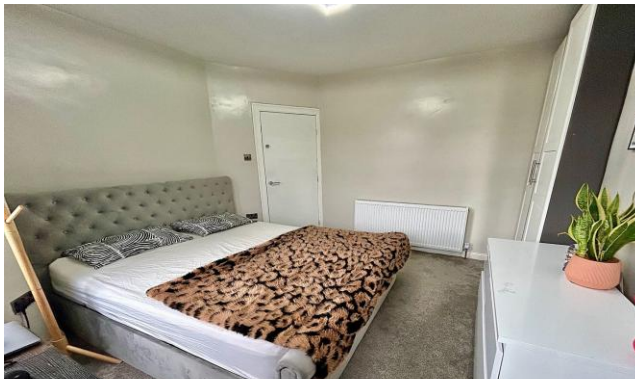
Internally the property comprises: welcoming entrance hallway, bay fronted living room with an abundance of natural light and large Victorian style double glazed windows. The living room opens out through sliding doors to the rear dining room. A recently refitted modern kitchen with useful under stairs storage. The whole ground floor benefits from attractive wooden flooring.

To the first floor there are three good sized double bedrooms, the primary bedroom benefits from a bay fronted window. A stylish refitted three-piece bathroom suites, serves all three bedrooms.

Externally to the front there is off road parking, a secure gate provides access to the landscaped and private Westerly facing rear garden.

Situated on the border of Withington and Fallowfield the house is very conveniently located for commuting into the city centre, and particularly well situated for ease of access to both University and Hospital complexes at Christie's and Manchester Royal Infirmary. There are many buses routed along Wilmslow Road travelling directly into Manchester and nearby Princess Road again offers direct routes to the city centre and the national motorway network. The centre of Fallowfield caters for everyday shopping requirements and there is a wide range of cafes, bars, pubs and restaurants for all tastes. Schools and recreational facilities in the area are good.









DIRECTIONS

M14 6FJ

COUNCIL TAX BAND

C

TENURE

Freehold

SERVICES (NOT TESTED)

Services have not been tested and you are advised to make your own enquiries and/or inspections.

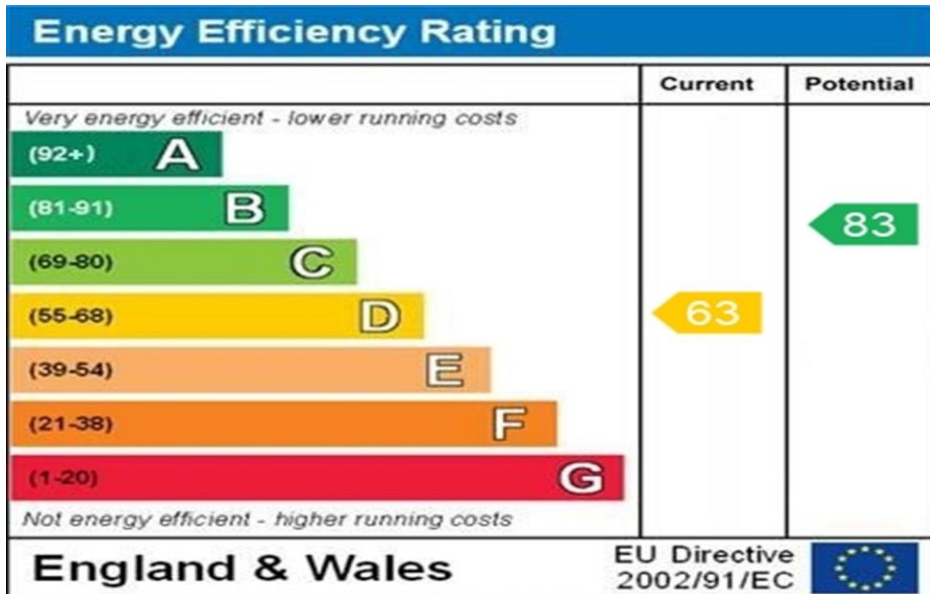
LOCAL AUTHORITY

Manchester City Council

VIEWING

Viewing strictly by appointment.

EFFICIENCY RATING



WWW.EPC4U.COM

PRIMARY SOURCE OF HEATING

Gas fired hot water radiators

PRIMARY ARRANGEMENT FOR SEWERAGE

Mains Supply

PRIMARY SOURCE OF ELECTRICITY

Mains Supply

PRIMARY SOURCE OF WATER

Mains Supply

BROADBAND CONNECTION

Fibre to the premises

ANY EASEMENTS, SERVITUDES OR WAYLEAVES?

No

ARE THERE ANY RESTRICTIONS ASSOCIATED WITH THE PROPERTY

No

THE EXISTENCE OF ANY PUBLIC OR PRIVATE RIGHT OF WAY?

No

SOURCES OF FLOODING

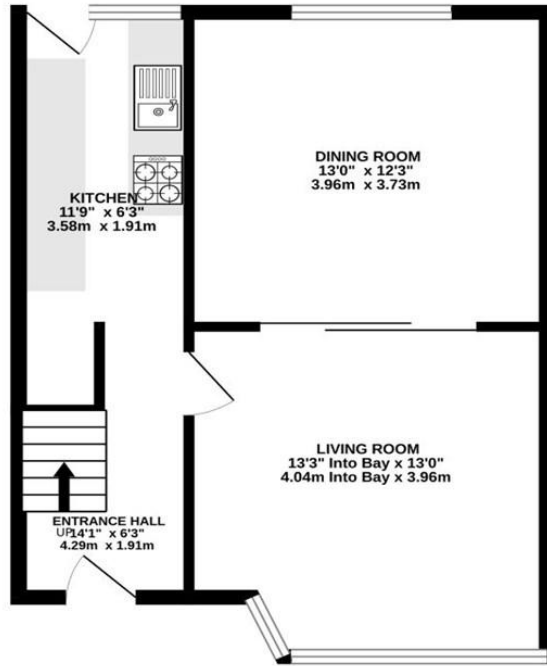
Ask Agent

HAS PROPERTY BEEN FLOODED IN 5 YEARS

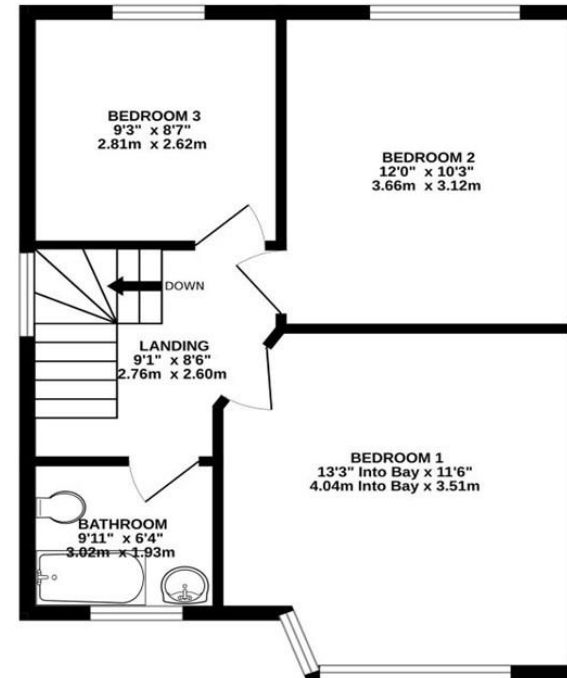
No

NOTICE Gascoigne Halman for themselves and for the vendors or lessors of this property whose agents they are give notice that: (i) the particulars are set out as a general outline only for the guidance of intending purchasers or lessees, and do not constitute, nor constitute part of, an offer or contract; (ii) all descriptions, dimensions, references to condition and necessary permissions for use and occupation, and other details are given in good faith and are believed to be correct but any intending purchasers or tenants should not rely on them as statements or representations of fact but must satisfy themselves by inspection or otherwise as to the correctness of each of them; (iii) no person in the employment of Gascoigne Halman has any authority to make or give any representation or warranty whatever in relation to this property.

GROUND FLOOR
494 sq.ft. (45.9 sq.m.) approx.



1ST FLOOR
494 sq.ft. (45.9 sq.m.) approx.



TOTAL FLOOR AREA : 988 sq.ft. (91.8 sq.m.) approx.
Measurements are approximate. Not to scale. Illustrative purposes only
Made with Metropix ©2025



THE AREA'S LEADING ESTATE AGENCY

0161 445 7474 didsbury@gascoignehalman.co.uk
Elm House, 739 Wilmslow Road, Didsbury, Manchester, M20

6RN