

FREEHOLD



House - End Terrace (EPC Rating: )

WHIPPENDELL ROAD, WATFORD,  
WD18 7NN

£400,000

WARREN  
ANTHONY



# 3 Bedroom House - End Terrace located in Watford

A 3 bedroom end of terrace family home in need of refurbishment but offered for sale with no upper chain.

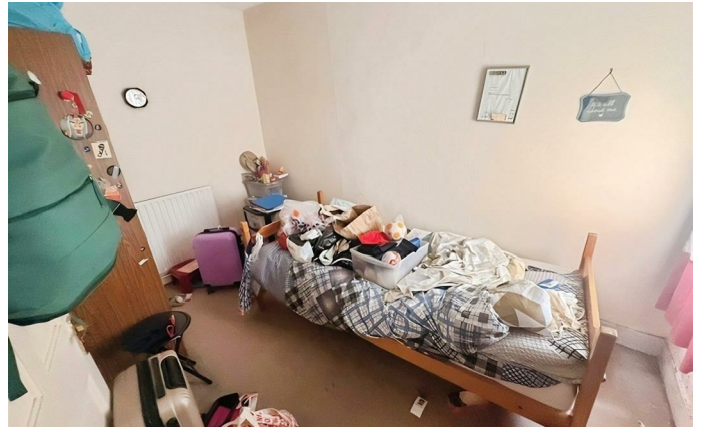
## **Full Description**

Offered to the market with no upper chain, this spacious three-bedroom end-of-terrace family home presents an excellent opportunity for buyers looking to create a home to their own taste or for investors seeking a refurbishment project.

The property offers well-proportioned accommodation throughout, including a generous living area, kitchen, three good-sized bedrooms, and a family bathroom. Externally, there is a private garden with the added benefit of the end-of-terrace position providing additional outdoor space and potential.

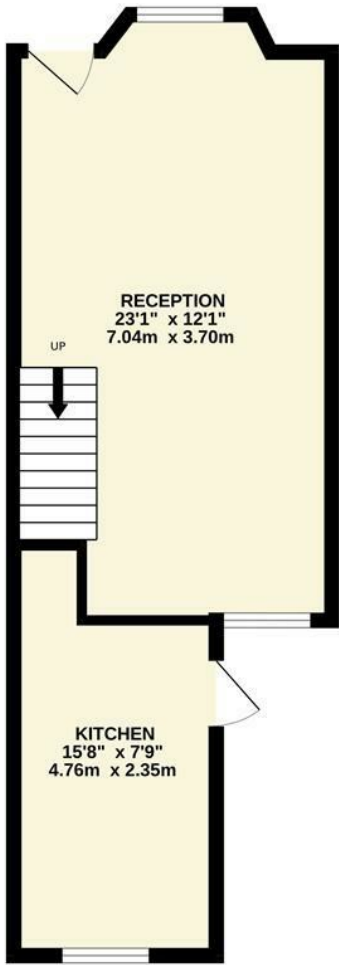
While the property is in need of modernisation and refurbishment, it offers fantastic potential to add value and transform into a wonderful family home.

Conveniently located close to local amenities, schools, transport links, and recreational facilities, this property is ideally suited to first-time buyers, families, or investors.



WATFORD LETTINGS | 12 MARKET STREET, WATFORD, HERTFORDSHIRE, WD18 0PD

GROUND FLOOR  
369 sq.ft. (34.3 sq.m.) approx.



1ST FLOOR  
358 sq.ft. (33.3 sq.m.) approx.

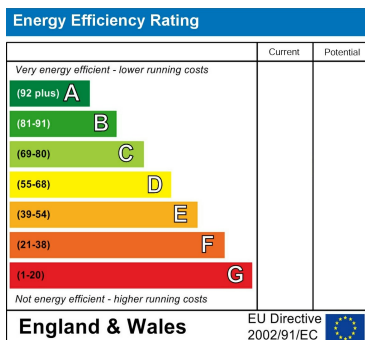


TOTAL FLOOR AREA : 727 sq.ft. (67.6 sq.m.) approx.

Whilst every attempt has been made to ensure the accuracy of the floorplan contained here, measurements of doors, windows, rooms and any other items are approximate and no responsibility is taken for any error, omission or mis-statement. This plan is for illustrative purposes only and should be used as such by any prospective purchaser. The services, systems and appliances shown have not been tested and no guarantee as to their operability or efficiency can be given.  
Made with Metropix ©2026

Council Tax Band

Energy Performance Graph



Call us on

**01923 220 012**

**rentals@warrenanthony.co.uk**

**www.warrenanthony.co.uk**

Agents Note: Whilst every care has been taken to prepare these particulars, they are for guidance purposes only. All measurements are approximate and are for general guidance purposes only and whilst every care has been taken to ensure their accuracy, they should not be relied upon and potential buyers are advised to recheck the