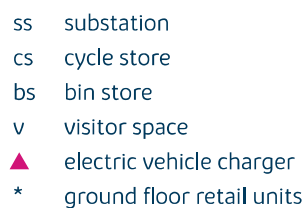


# Windrush Place apartments

Witney



Witney





# Windrush Place apartments

Witney

2 bedroom apartments

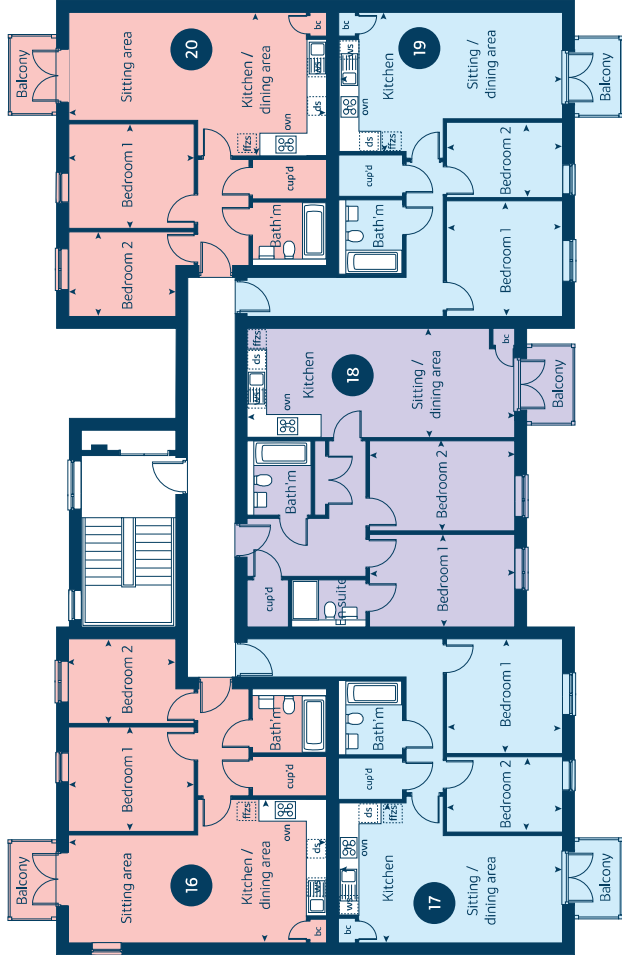
[bovishomes.co.uk](http://bovishomes.co.uk)

**Bovis  
Homes** 

# Windrush Place apartments

## 2 bedroom apartments

First floor



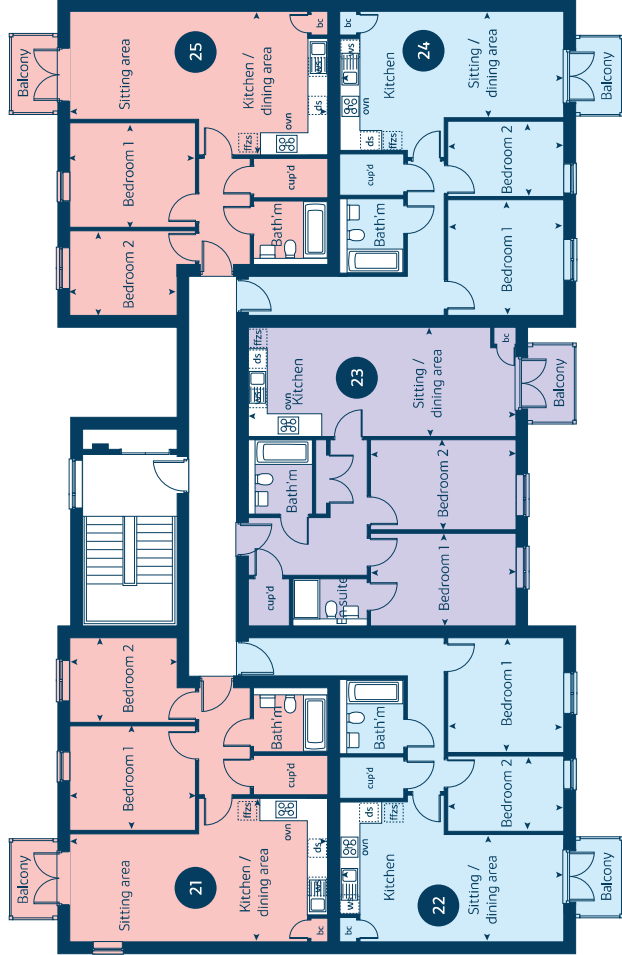
● Apartments 16, 20, 21 and 25

	metres	feet / inches
Kitchen / sitting / dining area	7.65 x 4.26	25' 1" x 14' 0"
Bedroom 1	3.72 x 3.10	12' 3" x 10' 2"
Bedroom 2	3.18 x 2.51	10' 5" x 8' 3"

● Apartments 17, 19, 22 and 24

	metres	feet / inches
Kitchen / sitting / dining area	6.64 x 4.13	21' 9" x 13' 6"
Bedroom 1	3.40 x 3.40	14' 2" x 14' 2"
Bedroom 2	3.40 x 2.23	11' 2" x 7' 4"

Second floor



Windrush Place | Block B Witney |

The floor plan has been produced for illustrative purposes only. Room sizes shown are indicative only. External details or finishes may vary on individual developments. Measurements are taken to the face of the walls and should not be used other than for general guidance. If specific dimensions are required, enquiries should be made to the sales consultant. The floor plans shown are not to scale. Measurements are based on the original drawings. Slight variations may occur during construction.

The illustrations shown are computer generated impressions of how the property may look and are indicative only. External details or finishes may vary on individual developments. Measurements are taken to the face of the walls and should not be used other than for general guidance. If specific dimensions are required, enquiries should be made to the sales consultant. The floor plans shown are not to scale. Measurements are based on the original drawings. Slight variations may occur during construction.

Please note, retail units to ground floor. Please speak to our sales consultant for further details.



Use this guide to see what features are included in your new home. Your sales consultant will be happy to discuss the **Select** range of extras available.

### Kitchen

- Choice of Standard / Premium fitted kitchen (doors and worktops)\*
- Integrated oven, hob and hood

### Bathroom

- Ideal Standard contemporary white Concept Air sanitary ware
- Shower over the bath (full height tiling to length and side of bath)
- Choice of standard Porcelanosa wall tiling (splashback, 450mm over bath, and full-height to shower cubicle)\*
- Chrome bezel LED bulkhead to bathroom and en suite(s)

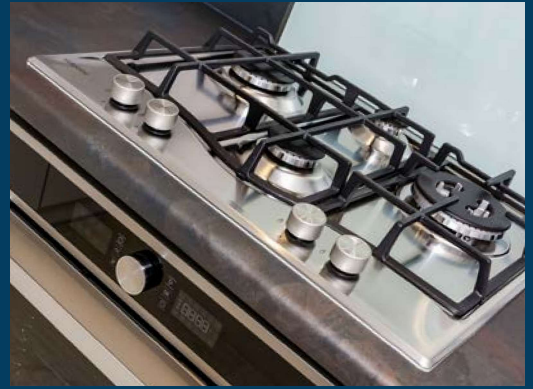
### Doors and Windows

- Front door with multi-point security locking system and security chain
- PVCu double glazing to windows
- White painted four panel doors with chrome lever handles

### General

- White painted walls and smooth white ceilings
- Combined usb / double sockets in kitchen and bedroom 1
- Multi-media point in sitting room
- TV point to bedroom 1 (where applicable)
- Master telephone socket
- Gas central heating with wall mounted combi-boiler, programme selector and room thermostat(s)
- Thermostatic valves to all radiators (with the exception of rooms with separate thermostat control)
- Mains wired smoke detectors with battery back-up
- NHBC Buildmark cover
- First two years' customer service support from Bovis Homes
- Electric vehicle charging point
- PV solar panels

\* Subject to stage of construction



The specification shown is correct at the time of production. Bovis Homes is continually reviewing and updating the specification on all house/apartment types and therefore reserves the right to change specification details. Photographs depict typical Bovis Homes interiors and may include optional upgrades. For full details regarding the current specification and finishes, please speak to our sales consultant.

Every care has been taken in the preparation of this brochure. The apartment building shown (including its position) is a computer-generated artists impression and should be used for illustrative purposes only. Any surrounding areas, landscaping, roads, footpaths, driveways, walls, fences, trees, bushes, and other details shown in this illustration are merely to create an impression. Please see the development layout plan for details of the apartment location and proximity to other houses. The development layout, landscaping and tenure of all dwellings may be subject to change throughout the course of the development. Please speak to our sales consultant for details of individual apartments.

Produced by the Vistry Group Design Studio.

When you have finished with this leaflet please recycle it.

DS12419 / 01.25