



## Shearwater Drive, NW9

### £475,000

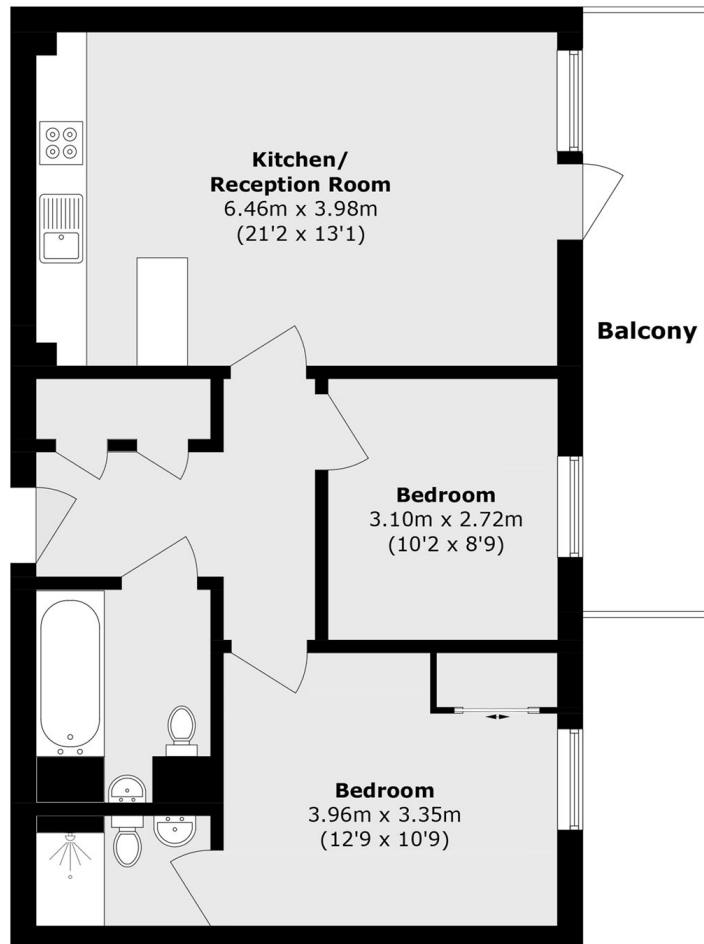
A beautifully presented two flat with stunning views overlooking the Welsh Harp Reservoir. This bright home is located on the seventh floor and benefits from two bathrooms, a parking space and a large private balcony.

This excellent modern development is idyllically located on the waterside and is within easy access of Hendon Thameslink station and Hendon Central underground station.

### Features

- Two Double Bedrooms
- Two Bathrooms
- Parking Space
- Private Balcony
- Lake Views
- Seventh Floor

Shearwater Drive,  
London, NW9



Total area (approx.): 68.5 sq. m (737.3 sq. ft)  
Balcony area (approx.): 10.7 sq. m (115.2 sq. ft)