

A large, two-story red brick house with a dark grey slate roof, a chimney, and a two-car garage with dark wood doors. The house has a covered front entrance and a paved driveway. The sky is blue with scattered white clouds.

# 2 REDBANK MEWS RAUNDS

**DARREN WOOTTON**  
BESPOKE ESTATE AGENT

07808 314772  
[darren.wootton@exp.uk.com](mailto:darren.wootton@exp.uk.com)



## 2 REDBANK MEWS

Offers Over: £550,000

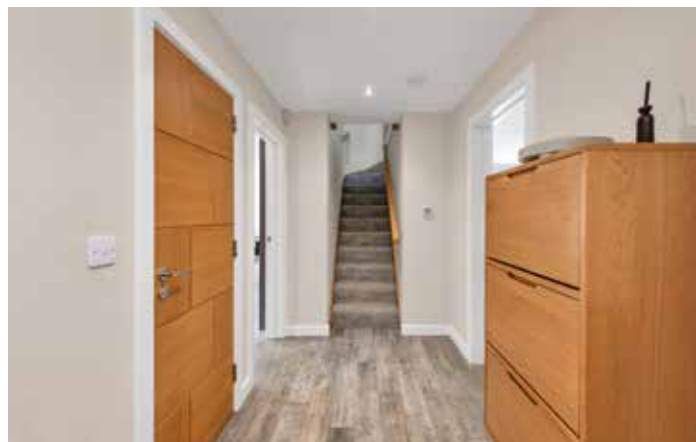
Nestled in a private enclave of just three homes, this stunning 4-bedroom detached residence (built 2017) offers the perfect blend of security, style, and connectivity. Experience seamless entertaining with a 23ft open-plan kitchen and a south-facing wrap-around garden, all while being minutes from the premier shopping at Rushden Lakes and the tranquil trails of Stanwick Lakes. With rapid London rail links and elite schooling nearby, this is high-end living in the heart of Raunds.



Situated in the heart of Raunds, the property enjoys easy access to local amenities, schools, and green spaces, while the gated entrance ensures a quiet, low-traffic environment for total peace of mind.

Raunds is conveniently located for access to the A14/A45 and offers a short commute to mainline train stations to access London in around an hour. You'll also find yourself close to some amazing countryside and the protected wetlands of the Rockingham Forest Trust at Stanwick Lakes, connecting you with the Ringstead and Woodford walking and cycling routes at your doorstep. Chester House and Irchester Country Park are a short drive away - which have been very popular destinations for families. If you're looking for a great place to have some fun and unwind with family or friends, Rushden Lakes offers a huge array of shops, bars, restaurants and leisure facilities and is only a short drive from the home'

Primary schooling is available in Raunds and secondary schools are in Rushden, Higham Ferrer's, Wellingborough and Kettering. Private schools locally include Wellingborough School, Kimbolton School and the Harper Trust schools in Bedford.





### The Property

Set within a discreet, securely gated development of just three bespoke executive homes, this stunning four-bedroom detached residence offers a rare combination of privacy, contemporary style, and expansive living space. Constructed just five years ago, the home remains in pristine condition, boasting high-specification finishes such as modern glass-panelled balustrades and seamless indoor-outdoor entertaining spaces.

### The Living Space

The ground floor has been intelligently designed with an L-shaped layout that prioritises natural light and social flow. At the heart of the home is a spectacular 23ft open-plan kitchen and family room—a versatile space perfect for modern family life. For more formal occasions, the separate, well-proportioned living room offers a sophisticated retreat. Both primary reception rooms feature direct access to a sprawling rear patio, perfectly blending the interior with the manicured gardens. A spacious entrance hall, practical utility room, and guest WC complete the ground floor.

### The Bedrooms

Sleeping quarters are arranged over two floors, offering excellent versatility for families or those working from home:

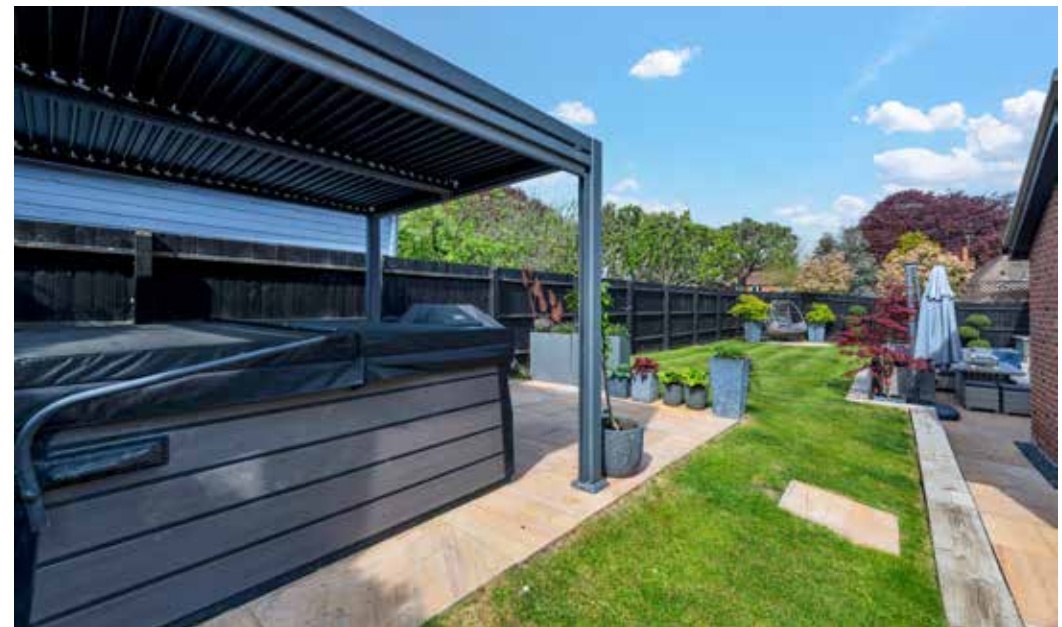
**First Floor:** Features the primary master suite and a second generous double bedroom, both served by private, modern en-suite shower rooms. A third bedroom and a stylish family bathroom are also located on this level.

**Second Floor:** A staircase leads to an impressive open-plan landing, which serves as an ideal reading nook or study area, providing access to a substantial fourth bedroom.

### Gardens & Parking

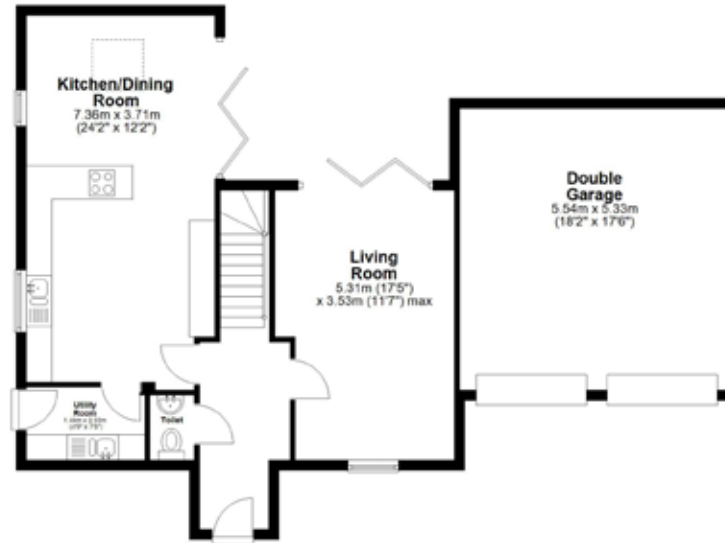
The exterior of the property is as impressive as the interior. The south-facing garden is a sun-trap, wrapping around the side of the house to provide multiple areas for relaxation and play. To the front, a premium block-paved driveway provides extensive off-road parking for multiple vehicles, leading to a large double garage.





Call **Darren Wootton** to arrange a viewing on **07808 314772**

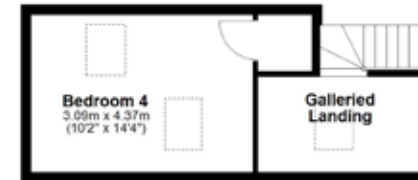
**Ground Floor**  
Approx. 85.5 sq. metres (920.2 sq. feet)



**First Floor**  
Approx. 62.1 sq. metres (668.2 sq. feet)



**Second Floor**  
Approx. 21.2 sq. metres (228.2 sq. feet)



Total area: approx. 168.8 sq. metres (1816.6 sq. feet)

IMPORTANT: we would like to inform prospective purchasers that these sales particulars have been prepared as a general guide only. A detailed survey has not been carried out, nor the services, appliances and fittings tested. Room sizes should not be relied upon for furnishing purposes and are approximate. If floor plans are included, they are for guidance only and illustration purposes only and may not be to scale. If there are any important matters likely to affect your decision to buy, please contact us before viewing the property.

Call **Darren Wootton** to arrange a viewing on **07808 314772**



**DARREN WOOTTON**

BESPOKE ESTATE AGENT

**07808 314772**

[darren.wootton@exp.uk.com](mailto:darren.wootton@exp.uk.com)

