



## VICTORIA ROAD, NW6

£2,000 per week

Private patio garden  
Newly refurbished throughout  
Fully fitted kitchen  
Modern bathroom

@marshandparsons  
marshandparsons.co.uk

MARSH &  
PARSONS



# ABOUT THE PROPERTY

A wonderful newly refurbished one double bedroom property in a period conversion moments from Queens Park and Kilburn. The property boasts its own entrance, good size double bedroom, a large reception room, separate modern kitchen and bathroom as well as direct access to a private patio/garden.

Victoria Road is a quiet residential street located with in easy reach of green open spaces of Queen's Park and the restaurants, cafes and amenities of Kilburn High Road and Salisbury Road. Local transport links include Kilburn High Road (London Overground) and Queen's Park (Bakerloo Line).



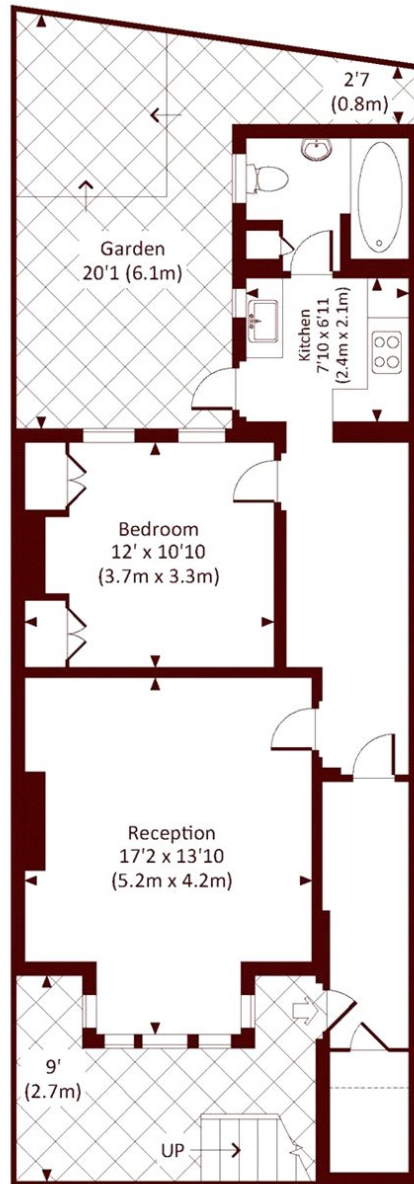
# STEP INSIDE VICTORIA ROAD

## VICTORIA ROAD, NW6

Approx. gross internal area

625 Sq.Ft. / 58.1 Sq.M.

640 Sq.Ft. / 59.5 Sq.M. Inc. Restricted Height Area



LOWER GROUND FLOOR



All measurements have been made in accordance with RICS Code of Measuring Practice which are approximate only and only for illustrative purposes. For the avoidance of doubt, Dowling Jones Design shall not be liable for any reliance on these measurements. © 2015 www.dowlingjones.com 020 7610 9993

Queen's Park  
020 7871 5050

Energy Rating: We aim to make our particulars both accurate and reliable. However, they are not guaranteed; nor do they form part of an offer or contract. If you require clarification on any points then please contact us, especially if you're traveling some distance to view. Please note that appliances and heating systems have not been tested and therefore no warranties can be given as to their good working order

MARSH &  
PARSONS