



Discovery Walk, E1W

£485,000

 2  1  1  C

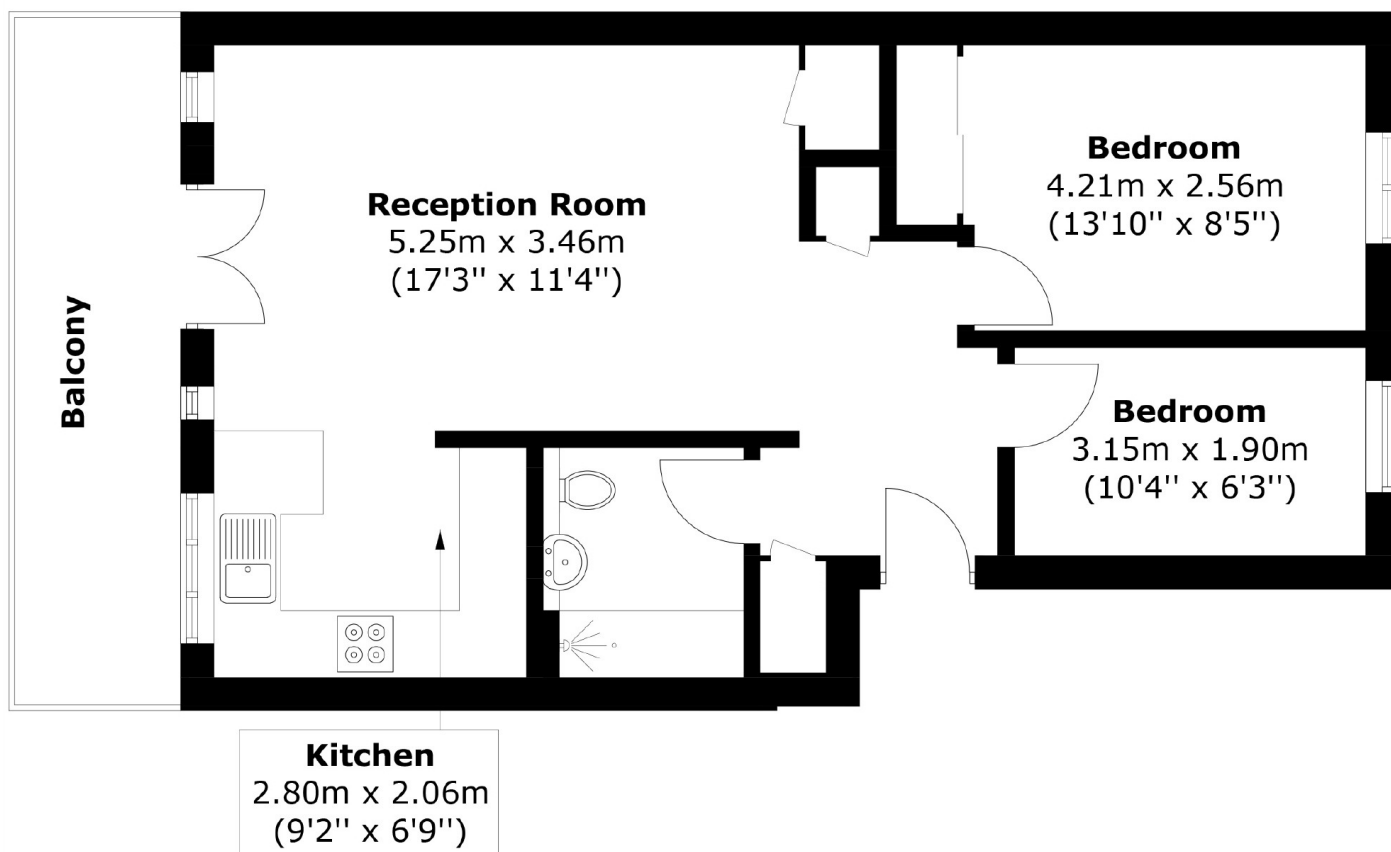
- Open plan
- Parking space
- Two double bedrooms
- Private Balcony
- Large storage space
- Share of Freehold



Set on the Ornamental Canal, this two double bedroom apartment is set in a stylish development within West Wapping. Features include, an open plan reception room, re-fitted bathroom and kitchen, private balcony, a large converted storage room, allocated parking space, views overlooking Tobacco Dock and The Three Sisters Ship.

Situated in West Wapping, the property is approximately 0.6 miles from the picturesque St Katharine's Docks offering a wide range of restaurants, cafe's pubs and wine bars. Nearest transport links are Wapping Station which is 0.3 miles away.





Total area: Approx. 53.6 sq. meters (576.9 sq. feet)
Plus Balcony, approx. 9.2 sq. meters (99.0 sq. feet)

35A Wapping High Street,
London, E1W 1NR
020 7665 5589
ea2group.com