

**FERMERS**



GUIDE PRICE

**£650,000**

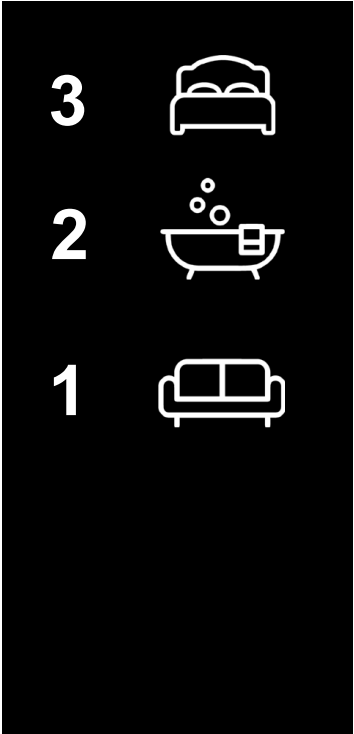
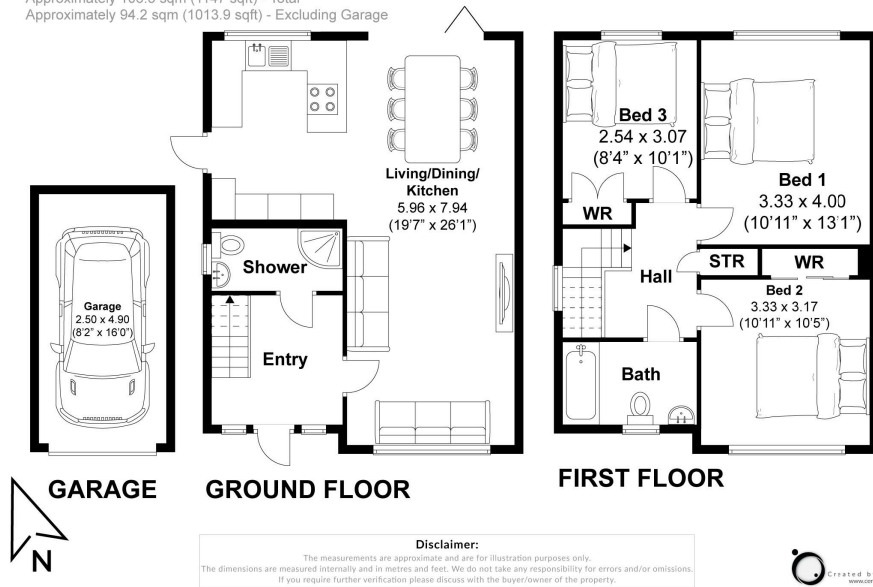
**Sandringham Close**

Hove, BN3 6XE

EPC RATING: D COUNCIL TAX BAND:

**Sandringham Close, Hove**

Approximately 106.5 sqm (1147 sqft) - Total  
 Approximately 94.2 sqm (1013.9 sqft) - Excluding Garage



Energy Efficiency Rating		Current	Potential
Very energy efficient - lower running costs			
(92 plus)	A		
(81-91)	B		
(69-80)	C		
(55-68)	D		
(39-54)	E		
(21-38)	F		
(1-20)	G		
Not energy efficient - higher running costs			
<b>England &amp; Wales</b>		68	
		EU Directive 2002/91/EC	

Agents Note: Whilst every care has been taken to prepare these particulars, they are for guidance purposes only. All measurements are approximate and are for general guidance purposes only and whilst every care has been taken to ensure their accuracy, they should not be relied upon and potential buyers/tenants are advised to recheck the measurements

**OFFICE ADDRESS**  
 67 Queen Victoria Avenue  
 Hove  
 East Sussex  
 BN3 6XA

**OFFICE DETAILS**  
 01273 541 177  
 sales@fermers.co.uk  
 www.Fermers.co.uk