



Oldfields Crescent | Stafford | ST18 0RS

Asking Price £200,000

 **Webbs**
estate agents

Summary

** NO CHAIN ** POPULAR VILLAGE LOCATION ** IN NEED OF MODERNISATION ** IDEAL FOR FIRST TIME BUYERS ** THREE BEDROOMS ** TWO RECEPTION ROOMS ** BATHROOM ** GARAGE ** CLOSE TO AMENITIES ** VIEWING ADVISED **

WEBBS ESTATE AGENTS are pleased to market this extended three bedroom mid terrace home, located in a popular area of Great Haywood on Oldfields Crescent. The property is in need of modernisation and would suit a first time buyer looking to get their foot on the property ladder. Viewing is advised to appreciate the size and space of the accommodation on offer. It is located close to amenities, useful transport links, schools and a short distance to both Canalside Cafe and the Shugborough Estate. The internal accommodation briefly comprises; entrance hallway, living room, dining room, kitchen, three bedrooms and a family bathroom. The property also benefits from a rear with a detached garage.

Key Features

- NO CHAIN
- IN NEED OF MODERNISATION
- THREE BEDROOMS
- BATHROOM
- CLOSE TO AMENITIES
- POPULAR VILLAGE LOCATION
- IDEAL FOR FIRST TIME BUYERS
- TWO RECEPTION ROOMS
- GARAGE
- VIEWING ADVISED

Rooms and Dimensions

Entry

Living Room

13'10 x 14'9 (4.22m x 4.50m)

Dining Room

17'0 x 7'10 (5.18m x 2.39m)

Kitchen

16'6 x 6'8 (5.03m x 2.03m)

Landing

Bedroom 1

15'8 x 8'7 (4.78m x 2.62m)

Bedroom 2

9'2 x 8'4 (2.79m x 2.54m)

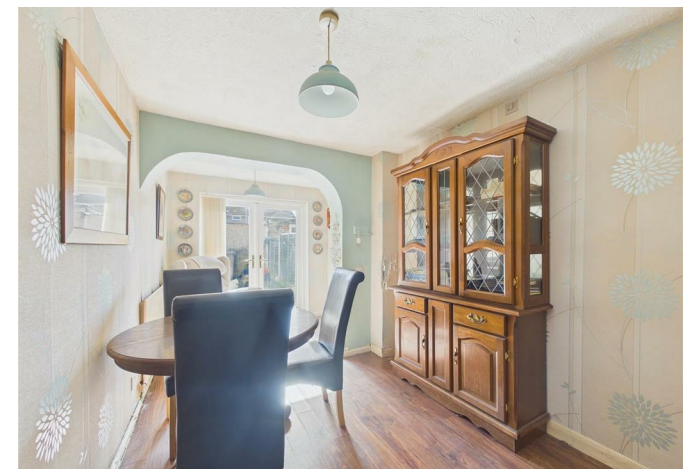
Bedroom 3

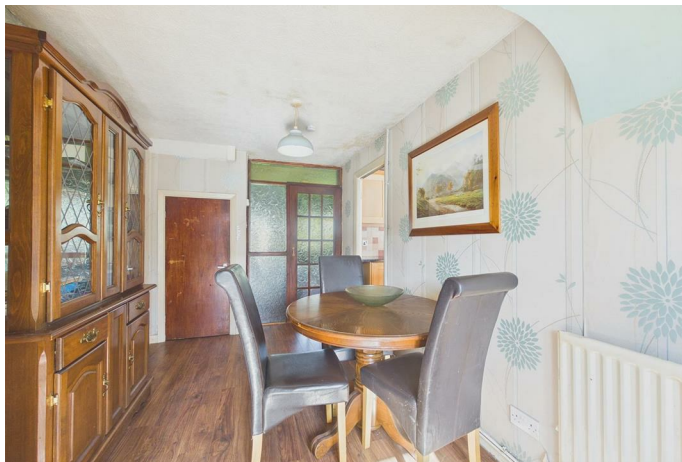
8'7 x 5'11 (2.62m x 1.80m)

Bathroom

6'2 x 6'2 (1.88m x 1.88m)

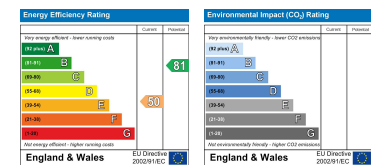
Identification Checks (R)







Webbs Estate Agents - endeavour to maintain accurate depictions of properties in Virtual Tours, Floor Plans and descriptions, however, these are intended only as a guide and purchasers must satisfy themselves by personal inspection.



Globe House Upper Brook Street, Rugeley, Staffordshire, WS15 2DN

Tel: 01889 583377 | Email: rugeley@webbsea.co.uk | www.webbestateagents.co.uk

