



Darwin Court

Gloucester Avenue, NW1

£3,900 per month
(£900 per week)

A well-presented two-bedroom apartment set within the popular Darwin Court development, ideally located in the heart of Primrose Hill.

CHESTERTONS



Darwin Court

Gloucester Avenue, NW1

- Two-bedroom apartment in a sought-after development
- Principal bedroom with en-suite bathroom
- Spacious double-length reception room
- Oak wood flooring throughout
- Prime Primrose Hill location close to parks and transport links
- Heating & Hot Water Included

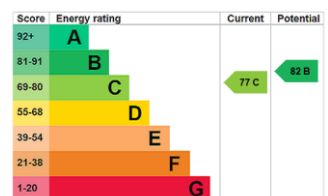


A well-presented two-bedroom apartment set within the popular Darwin Court development, ideally located in the heart of Primrose Hill.

The property benefits from oak wood flooring throughout and comprises a principal bedroom with en-suite bathroom, a further double bedroom, a modern family bathroom, a spacious double-length reception room and a separate fitted kitchen. Heating is included within the rent. Offered unfurnished.

Darwin Court is perfectly positioned for the cafés, restaurants and boutiques of Primrose Hill Village, while the open green spaces of

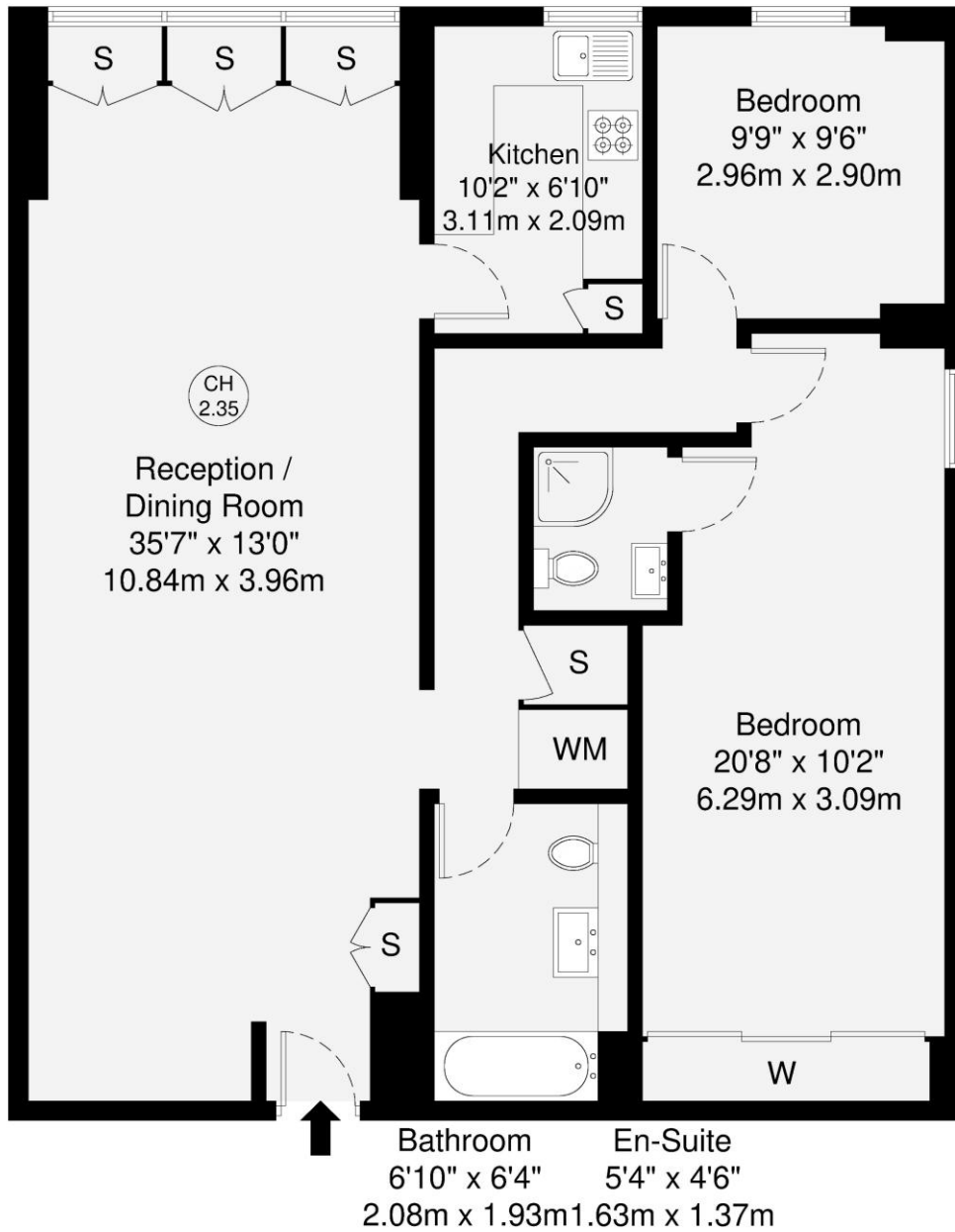
Minimum Term: 6 months
Deposit Required: £4,500.00
Local Authority: Camden
Council Tax Band:
EPC Rating: C
Unfurnished



Chestertons Camden & Primrose Hill Lettings

99-101 Parkway
 London
 NW1 7PP
 camdentownlettingsusers@chestertons.co.uk
 02072673574
 chestertons.co.uk

Additional tenant charges apply (fees apply to non-AST tenancies only)
 Tenancy Agreement Fee: £300
 References per Tenant/Guarantor: £60
 Inventory check (approx. £100 – £250 inc. VAT)
 chestertons.co.uk/property-to-rent/applicable-fees



Raised Ground Floor

GROSS INTERNAL AREA (GIA)
The footprint of the property
100.4 sq m / 1080 sq ft

TOTAL STORAGE SPACE
Storage and wardrobe total area
5.2 sq m / 55 sq ft

EXTERNAL FEATURES
Garden, Balcony, Terrace, Verandah etc.
0.0 sq m / 0.0 sq ft

RESTRICTED HEAD HEIGHT
Limited use area under 1.5m
0.0 sq m / 0.0 sq ft

Disclaimer : Floorplan measurements are approximate and are for illustrative purposes only. While we do not doubt the floorplan accuracy and completeness, you or your advisors should conduct a careful, independent investigation of the property in respect of monetary valuation.

Maison VUE

