

for sale

offers in excess of **£425,000**



Gilder Close Luton LU3 4AX

This large detached bungalow is situated in a quiet cul-de-sac in the Barton Hills area of LU3. The accommodation overlooks the woods and perfect for anyone looking for a quiet reserved lifestyle. Benefits include; large garage, driveway for four vehicles and potential to extend (stpp).

Gilder Close Luton LU3 4AX

Entrance Porch

Double glazed frosted door to side aspect.

Entrance Hall

Double glazed frosted door to side aspect. Airing cupboard housing hot water tank. Storage cupboard. Radiator.

Utility Room

Double glazed frosted window to front aspect. Door to garage. Radiator.

Kitchen/Diner

Double glazed windows to front and side aspects. Fitted kitchen comprising a range of wall and base units with work surfaces over incorporating a stainless steel sink and drainer unit. Space for a range cooker. Integrated fridge and freezer. Part tiled. Radiator.

Lounge

Double glazed bay window to front aspect. Gas fire place.

Radiator.

Bathroom

Double glazed window to side aspect. Suite comprising bath with shower over, wash hand basin and low level wc. Heated towel rail. Part tiling. Tiled flooring.

Bedroom One

Double glazed window to rear aspect. Built in wardrobes. Radiator.

Bedroom Two

Double glazed window to rear aspect. Built in wardrobes. Radiator.

Bedroom Three

Double glazed patio doors to rear aspect. Radiator.

Front Garden



Driveway providing off road parking for up to four vehicles.

Rear Garden

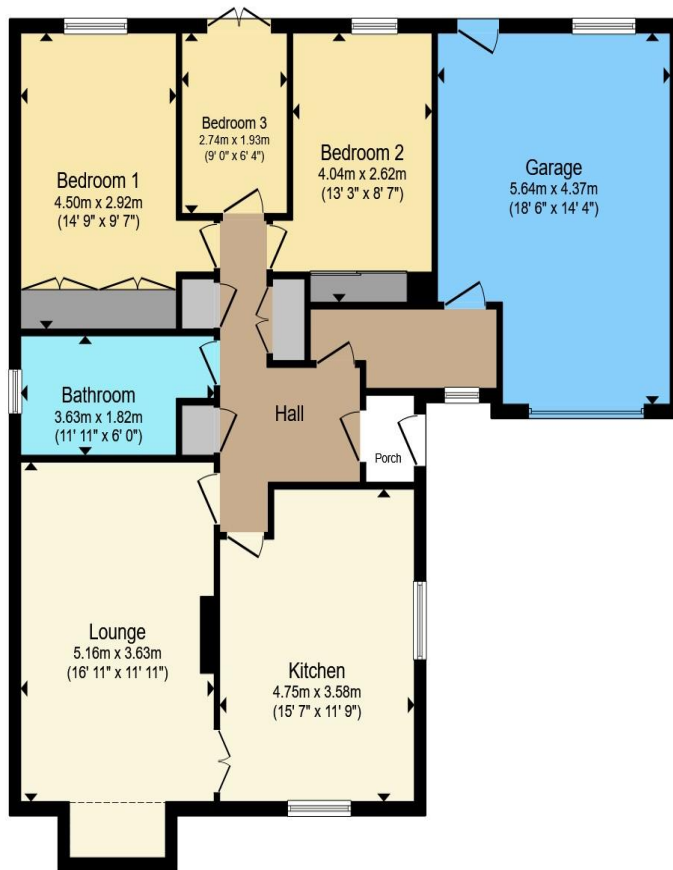
Laid to lawn with a patio area. Shrubs and trees. Plum and cherry trees. Gate to front aspect.

Garage

Up and over door. Power and light. Double glazed patio doors to rear aspect. Boiler.







Total floor area 112.8 m² (1,215 sq.ft.) approx

This floor plan is for illustrative purposes only. It is not drawn to scale. Any measurements, floor areas (including any total floor area), openings and orientation are approximate. No details are guaranteed, they cannot be relied upon for any purpose and they do not form part of any agreement. No liability is taken for any error, omission or misstatement. A party must rely upon its own inspection(s). Powered by www.propertybox.io



To view this property please contact Connells on

T 01582 592332
E lutonnorth@connells.co.uk

1A Riddy Lane
 LUTON LU3 2AD

Property Ref: LUN103976 - 0003

Tenure:Freehold EPC Rating: Awaited

Council Tax Band: E

view this property online
connells.co.uk/Property/LUN103976

1. MONEY LAUNDERING REGULATIONS Intending purchasers will be asked to produce identification documentation at a later stage and we would ask for your co-operation in order that there will be no delay in agreeing the sale. 2. These particulars do not constitute part or all of an offer or contract. 3. The measurements indicated are supplied for guidance only and as such must be considered incorrect. Potential buyers are advised to recheck measurements before committing to any expense. 4. We have not tested any apparatus, equipment, fixtures, fittings or services and it is in the buyers interest to check the working condition of any appliances.

Connells Residential is registered in England and Wales under company number 1489613, Registered Office is Cumbria House, 16-20 Hockliffe Street, Leighton Buzzard, Bedfordshire, LU7 1GN. VAT Registration Number is 500 2481 05.

see all our properties at www.connells.co.uk | www.rightmove.co.uk | www.zoopla.co.uk