



## Kingsdowne Road, KT6

£470,000

A beautifully designed two bedroom first floor apartment set within an elegant Victorian house conversion. There is a large reception room, separate modern kitchen with a breakfast bar, a large stylish bathroom with separate bath and shower and two bedrooms. This property also benefits from a share of the freehold, off-street parking and a well maintained south-west facing communal garden.

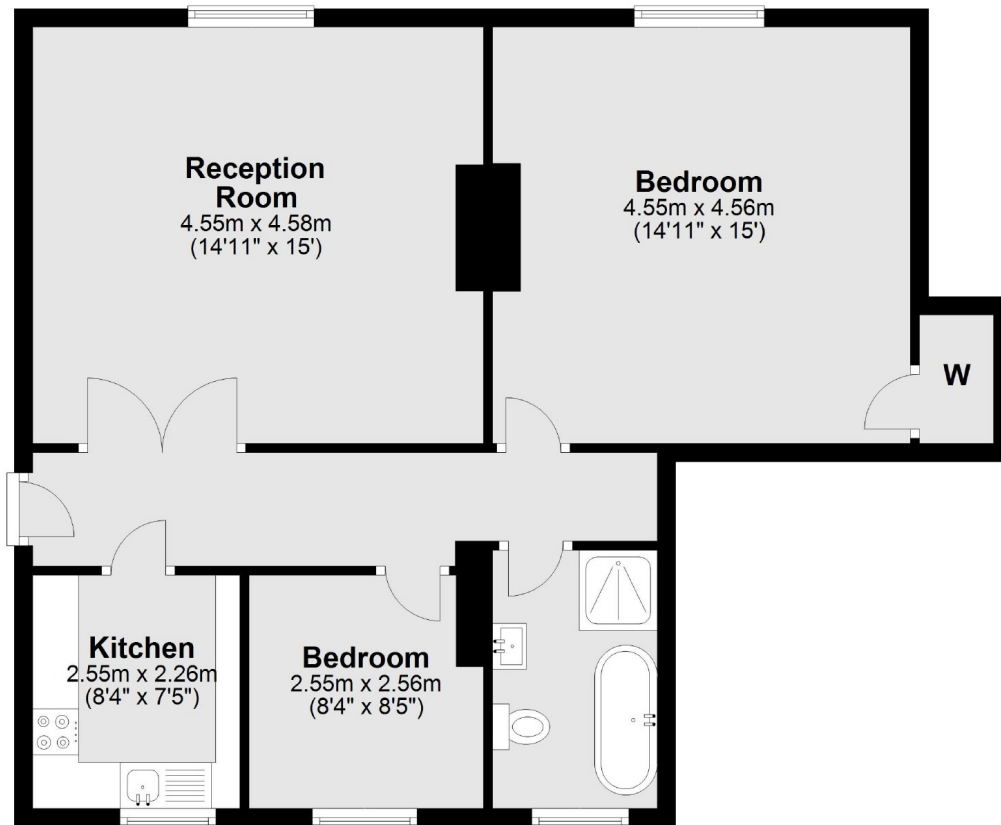
This desirable property is located on leafy Kingsdowne Road, just a 12-minute walk (or a 3-minute drive) from Surbiton's popular high street and mainline train station, offering fast and direct trains to London Waterloo in just 16 minutes. The flat also benefits from resident parking in the Oak Hill zone, allowing parking directly outside the station for £120 per year.

### Features

- First Floor
- Newly Refurbished
- Two Bedrooms
- Communal Garden
- Off-Street Parking
- Share Of Freehold

# Kingsdowne Road, Surbiton, KT6

## First Floor



Total area: approx. 72.1 sq. metres (776.4 sq. feet)