



**Guide Price**  
**£420,000**

**Leasehold**

3x  1x  1x 

**St. Stephen's Close,  
Walthamstow, London,  
E17**

**OVER 60?**

Secure this property  
for up to **59% less!**

 **DOUGLAS  
ALLEN**  
Helping you move forwards





## Main features

- Split-level apartment with balcony
- Vendor adding 90 years to lease
- Off street parking
- Double bedrooms and fitted kitchen
- Residential location close to Walthamstow Central
- Near the popular shops and restaurants in Orford Road

## Accommodation

### SECOND FLOOR

Lounge/Dining Area: 14'2 x 13'4 (4.32m x 4.07m)

Kitchen: 11'4 x 7'6 (3.46m x 2.29m)

### THIRD FLOOR

Bedroom 1: 14'4 x 13'9 (4.37m x 4.19m)

Bedroom 2: 12'2 x 11'3 (3.71m x 3.43m)

Bedroom 3: 9'6 x 8'7 (2.90m x 2.62m)

Bathroom: 9'2 x 6'2 (2.80m x 1.88m)

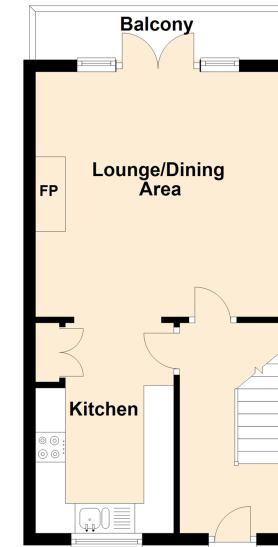
### OUTSIDE

Balcony

Communal Gardens

### Second Floor

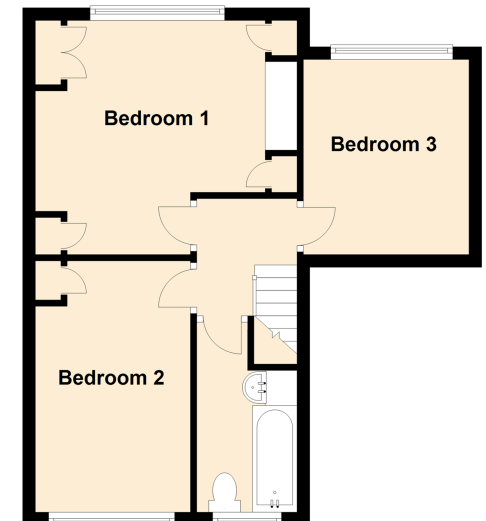
Approx. 31.8 sq. metres (342.4 sq. feet)



Total area: approx. 71.9 sq. metres (773.9)

### Third Floor

Approx. 40.1 sq. metres (431.6 sq. feet)



**Call Walthamstow - 020 8509 0092 ■ [douglasallen.co.uk](http://douglasallen.co.uk)**

- A private rental licensing scheme applies to some properties in this area, please contact us before proceeding
- Legal advice should be taken to verify fixtures/fittings, planning, alterations and/or lease details
- Appliances & services are untested, dimensions are approximate and floor plans are not to scale
- Through a Homewise Home For Life Plan people aged 60+ can secure this property for up to 59% less, by purchasing a Lifetime Lease.



53117756/20250220/DM/DM