

BUTLER & STAG



Meath Crescent, Bethnal Green E2
London

£2,350 pcm

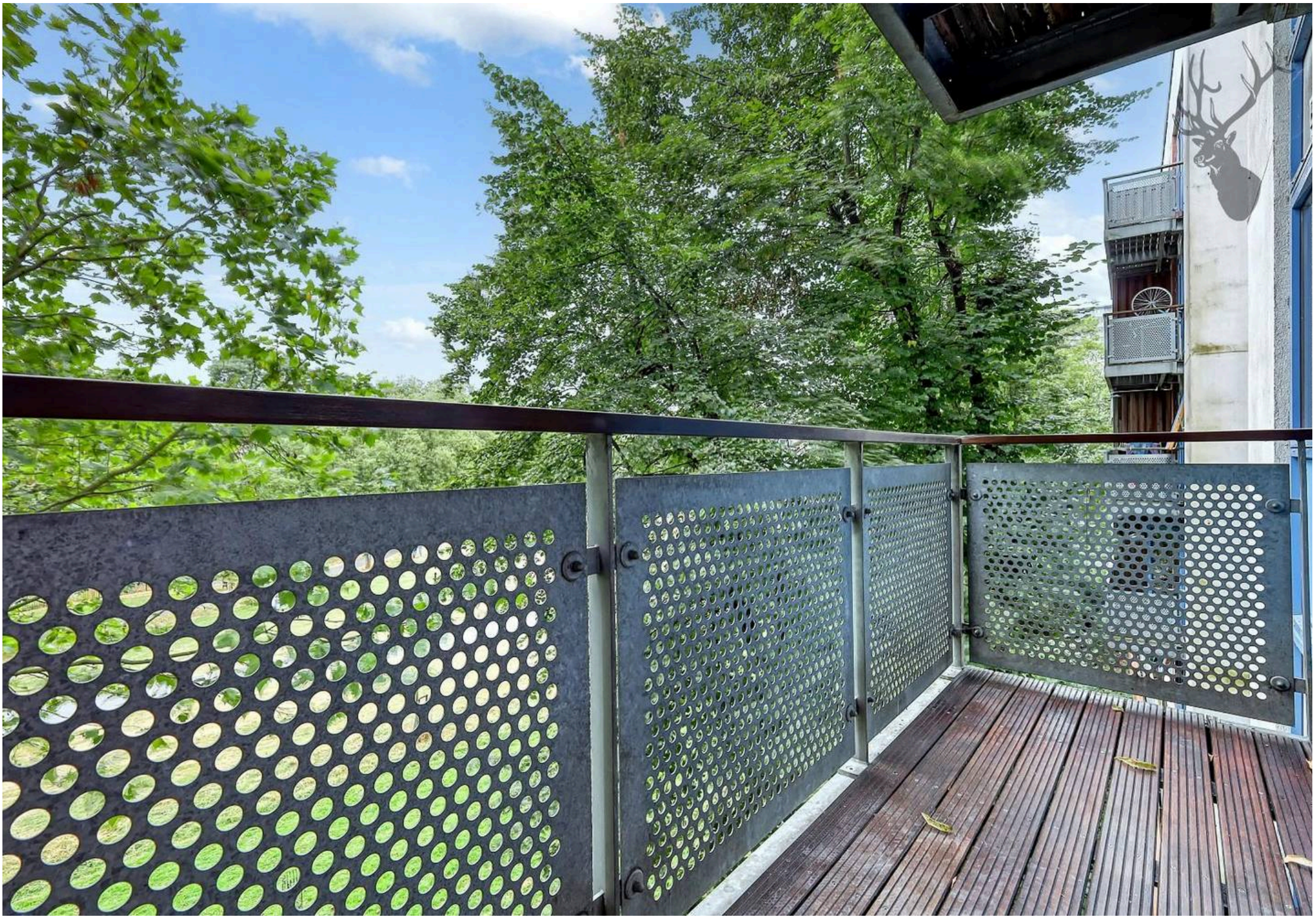


Meath Crescent, Bethnal Green E2

Immaculately presented two bedroom two bathroom apartment with park views, conveniently located between Mile End station and Victoria Park.

- Two Bedroom Two Bathroom Apartment
- Open-Plan Kitchen and Living Space
- Balcony with Views over Meath Gardens
- Third Floor
- Excellent Condition Throughout
- Close to Mile End Station and Victoria Park
- Unfurnished
- Available from 28th August 2026





Immaculately presented two bedroom two bathroom apartment with park views, conveniently located between Mile End station and Victoria Park.

This modern and well-proportioned property features a spacious open-plan kitchen/dining and living space, leading out to a balcony with glorious views over the leafy Meath Gardens.

Both bedrooms are good-sized doubles and the master incorporates an en-suite shower room. The apartment is completed by the main bathroom and plenty of internal storage.

Roundwood Court forms part of a well-maintained popular development that is also located close to Regent's Canal, some great local pubs and the amenities of Roman Road.

Perfect for a couple or two professional sharers, this property is offered unfurnished and is available from 28th August 2026.

Council Tax band: C

EPC Energy Efficiency Rating: B

EPC Environmental Impact Rating: C







Meath Crescent

Approx. Gross Internal Area 61.4 sq. metres (660.8sq. feet)



Measurements are approximate and for illustration purposes only. While we do not doubt the accuracy and completeness, we advise you conduct a careful independent assessment of the property to determine monetary value

FROM EAST LONDON ENERGY TO WEST ESSEX EASE

We Make Moving Home Easy.

At Butler and Stag, we do more than just connect London to West Essex – we make the move seamless. With offices spanning from vibrant East London to the tranquillity of West Essex, we understand the nuances of each area and the journey people take between them. Our marketing goes beyond standard listings, showcasing every property with precision, creativity, and reach that others simply can't match. Coupled with an unparalleled attention to detail, from first enquiry to final move-in, we ensure every client and customer feels informed, supported, and confident. Simply put, we do the little things that make a big difference, setting us apart in every step of the property experience.



LONDON STRATFORD SOUTH WOODFORD BUCKHURST HILL LOUGHTON EPPING BEYOND

Like what you see? Let's talk

Book your **FREE** valuation now



020 8102 1236

london@butlerandstag.com

508 Roman Road, Bow, London, E3 5LU

butlerandstag.uk

IMPORTANT NOTICE - These particulars have been prepared in good faith and they are not intended to constitute part of an offer or contract. We have not performed a structural survey on this property and the services, appliances and specific fittings have not been tested. All photographs, measurements, floor plans and distances referred to are given as a guide and should not be relied upon.

BUTLER & STAG

