

**2 Bed  
Apartment  
located in**

**AiHOMES.**

Luxury 2B2B Apartment |  
Linter Building |  
Manchester  
M1|LT257690MNS



£395,000

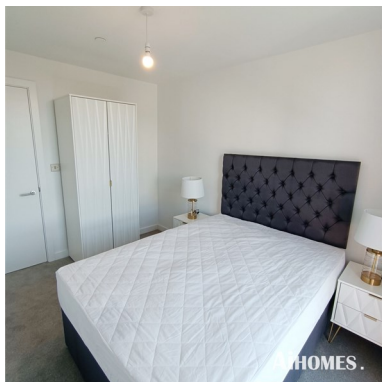
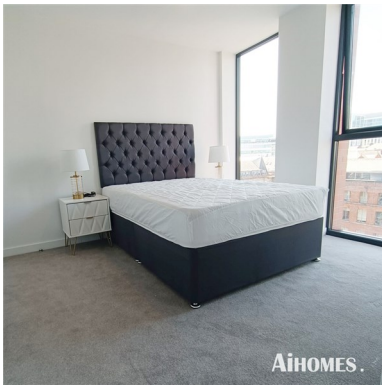
Welcome to this charming apartment located in the Linter Building, a desirable address that offers both comfort and convenience. Spanning an impressive 797 square feet, this well-appointed residence features two spacious bedrooms, making it an ideal choice for couples, small families, or professionals seeking a stylish urban retreat.

The apartment boasts two modern bathrooms, ensuring that both residents and guests enjoy privacy and ease during their daily routines. The layout is thoughtfully designed to maximise space and natural light, creating a warm and inviting atmosphere throughout.

Situated in a vibrant area, the Linter Building provides easy access to local amenities, including shops, restaurants, and public transport links, making it a perfect base for those who appreciate the hustle and bustle of city life while still enjoying a peaceful home environment.

This property presents an excellent opportunity for anyone looking to invest in a contemporary living space that combines practicality with modern aesthetics. Whether you are seeking a new home or a lucrative rental investment, this apartment is sure to impress. Do not miss the chance to make this delightful property your own.

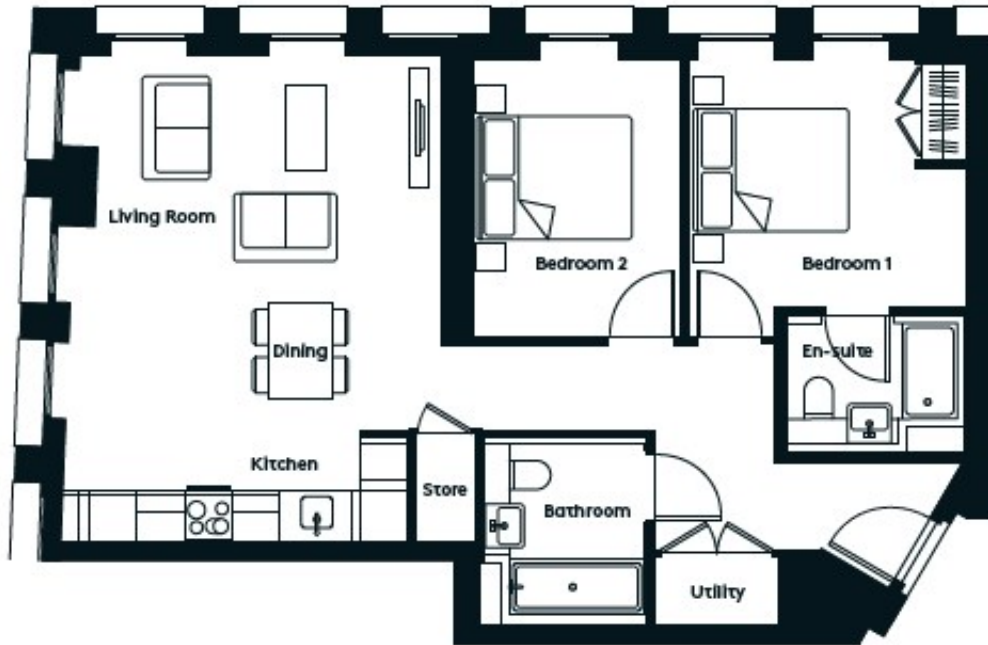






**Luxury 2B2B Apartment | Linter Building | Manchester  
M11 1T257690MNS**





Energy Efficiency Rating		
	Current	Potential
<i>Very energy efficient - lower running costs</i>		
(92 plus) <b>A</b>		
(81-91) <b>B</b>		
(69-80) <b>C</b>		
(55-68) <b>D</b>		
(39-54) <b>E</b>		
(21-38) <b>F</b>		
(1-20) <b>G</b>		
<i>Not energy efficient - higher running costs</i>		
<b>England &amp; Wales</b>	EU Directive 2002/91/EC	

**EPC Rating:**  
**Council Tax Band: E**

**CONTACT**

5th floor, Empress Business Center  
380 Chester Road  
Manchester  
M16 9EA

E: [info@aihomes.uk](mailto:info@aihomes.uk)

T: 0127 332 8069

**AiHOMES.**