



Khartoum Road, SW17

£300,000

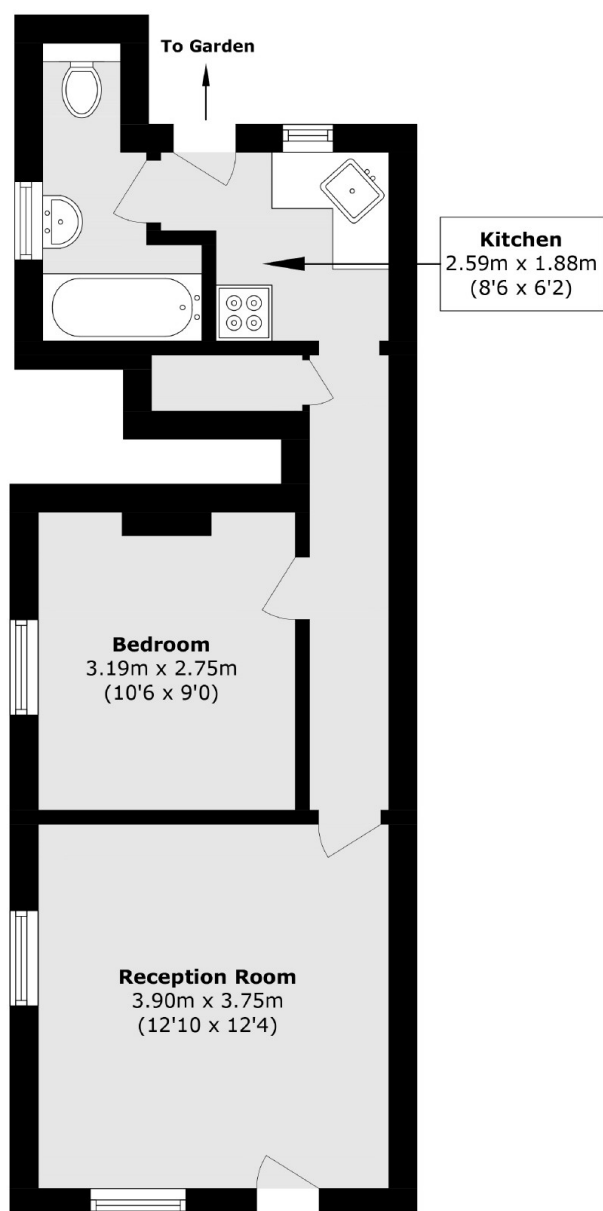
This bright ground floor period maisonette is offered for sale with no onward chain. Presented in good decorative order accommodation includes dual aspect front reception, double bedroom with feature fireplace, bathroom/wc and fitted kitchen with direct access to a private patio garden.

Khartoum Road is a desirable residential street located within a short walk to Tooting Broadway underground station with frequent links into London Bridge. The shops, bars and Restaurants of the high road are all close at hand.

Features

- Private Entrance
- Ground Floor
- Double bedroom
- Private Garden
- No Onward Chain
- Convenient Location

Khartoum Road, London, SW17



Total area (approx.): 38.5 sq. m (414.4 sq. ft)