

**Godolphin Road  
W12**



# Godolphin Road W12

**GARDEN FLAT  
ONE BEDROOM  
SEPARATE FITTED KITCHEN  
PRIVATE ENTRANCE  
GREAT STORAGE  
BATHROOM  
FURNISHED  
COUNCIL TAX BAND D  
EPC RATING D  
AVAILABLE NOW**

---

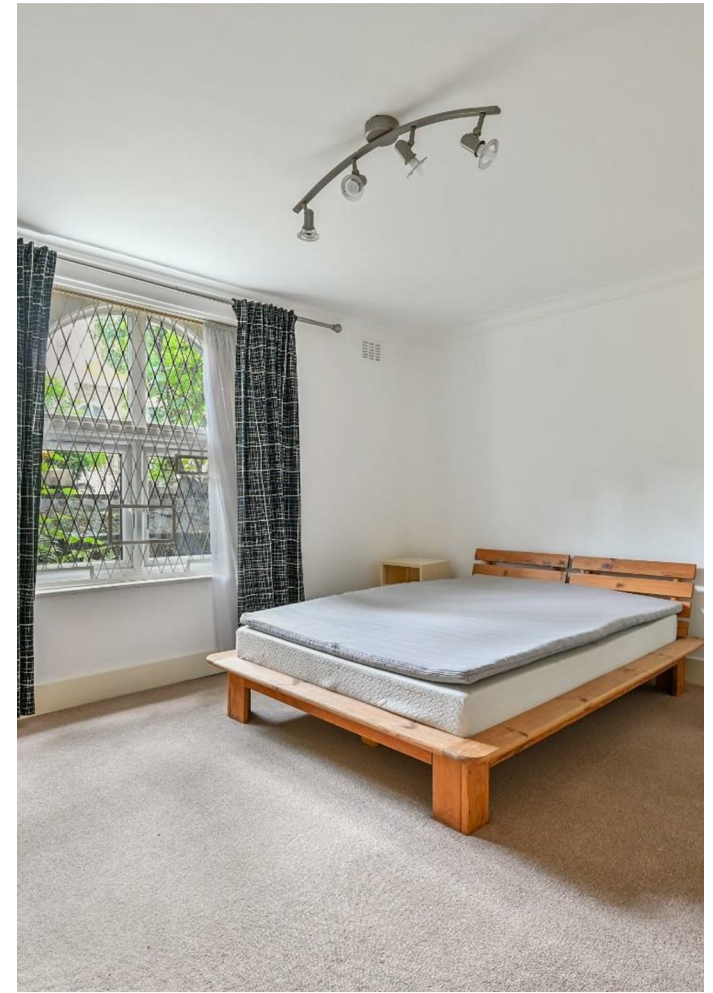
Charming 1 bedroom garden flat, with own entrance, spacious reception, separate fitted kitchen, bathroom, excellent storage and private garden. Located on a quiet residential street, close to shops, transport and Ravenscourt Park. Available now, furnished. Council Tax band D.

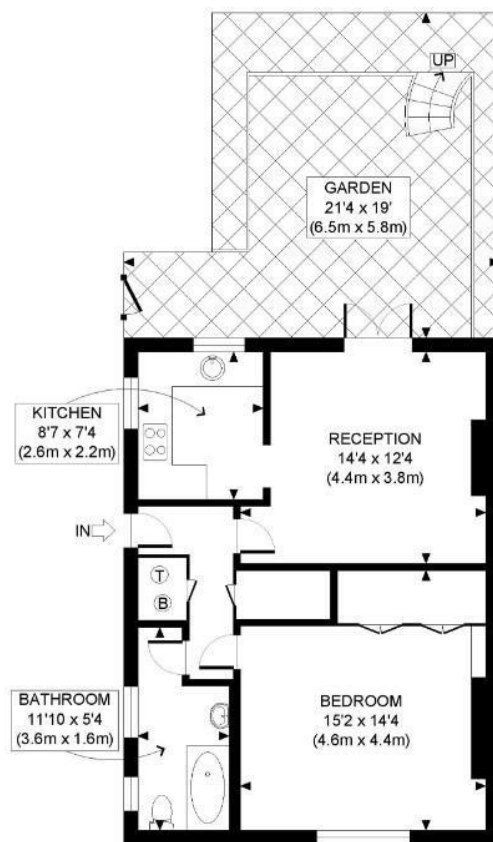
---

**£1,800 PER MONTH**

**SUBJECT TO CONTRACT**







LOWER GROUND FLOOR  
GROSS INTERNAL  
FLOOR AREA 568 SQ FT

APPROX. GROSS INTERNAL FLOOR AREA: 568 SQ FT/ 53 SQM

**PROPERTY PHOTO PLANS**.co.uk  
ONE STOP SHOP FOR PROPERTY MARKETING

Whilst every attempt has been made to ensure the accuracy of the floor plan contained here, measurements of the doors, windows, rooms and any other items are approximate and no responsibility is taken for any errors, omissions, or miss-statement. This plan is for illustrative purposes only and should be used as such by any prospective client. The services, systems and appliances shown have not been tested and no guarantee as to the operability or efficiency can be given.