



## 8-10 Knoll Rise

Orpington, BR6 0FD

**£1,450 Per Month**

Welcome to Berwick House, a delightful one bedroom flat located in the charming area of Knoll Rise, Orpington. This modern purpose built block offers a comfortable and stylish living space, perfect for individuals or couples seeking a contemporary home.

As you enter the flat, you are greeted by a welcoming entrance hallway that leads you into the heart of the home. The open plan kitchen and living area is designed for both relaxation and entertaining, featuring a well equipped kitchen that seamlessly flows into the living space. This layout not only maximises the use of space but also creates a warm and inviting atmosphere.

The flat boasts a generously sized bedroom, providing a peaceful retreat at the end of the day. The bathroom is well appointed, ensuring convenience and comfort for daily routines. Throughout the property, you will find a neutral decor that makes it easy to envision your own style within the space.

One of the standout features of this flat is the lovely balcony, offering a perfect spot to enjoy your morning coffee or unwind in the evening. The outdoor space adds an extra dimension to the property, allowing you to enjoy fresh air and natural light.

Situated in a desirable location, this flat is well connected to local amenities and transport links, making it an ideal choice for those who value convenience and accessibility. This one bedroom flat at Berwick House presents an excellent opportunity to secure a modern and comfortable home in Orpington.

### Viewing

Please contact our Galloways Penze Office on 020 8778 1120 if you wish to arrange a viewing appointment for this property or require further information.

- ONE BEDROOM FLAT
- OPEN PLAN KITCHEN
- FIRST FLOOR
- BALCONY
- CONTEMPORARY FITTED KITCHEN AND BATHROOM
- NEUTRALLY DECORATED
- FLOODED WITH NATURAL LIGHT
- MODERN APARTMENT BLOCK
- 1 MINUTE WALK TO ORPINGTON HIGH STREET
- (ALL WALKING TIMES ARE ESTIMATED VIA GOOGLE MAPS)



1



1



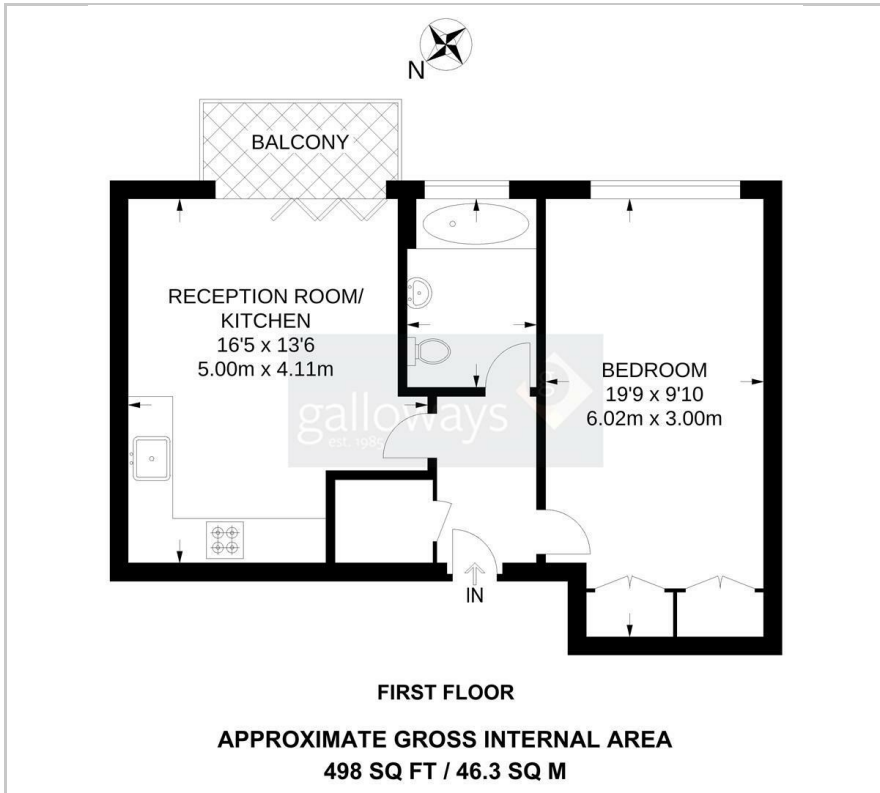
1



3

C

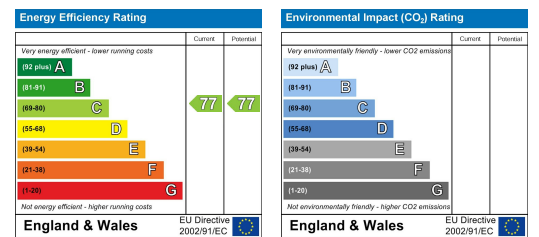
## Floor Plan



## Area Map



## Energy Efficiency Graph



These particulars, whilst believed to be accurate are set out as a general outline only for guidance and do not constitute any part of an offer or contract. Intending purchasers should not rely on them as statements of representation of fact, but must satisfy themselves by inspection or otherwise as to their accuracy. No person in this firm's employment has the authority to make or give any representation or warranty in respect of the property.