



SPENCERS  
LETTINGS



3 Athelstan Court St. Thomas Park  
Lymington

£1,100 PCM

A spacious two-bedroom apartment tucked away on a quiet no-through lane at the top of the High Street with residents' parking, a short-stay car park opposite, and a large garage with space for a workshop. Ideal central location with peaceful surroundings.

Holding deposit: £253 Security deposit: £1269 Council tax band: C



- Great location • No pets due to head lease restrictions • Walking distance to High Street • Garage with workshop • Visitor parking

Stairs lead up to the front door and into the communal entrance hall, with the private front door opening into a generous hallway offering useful storage for coats and umbrellas. The bright and spacious living room enjoys pleasant views over the rear of the property.

The kitchen benefits from a westerly aspect and is fitted with a range of worktops and cabinets, a single drainer sink, space and plumbing for a washing machine, space for a fridge freezer, and an integrated electric oven with four-ring hob.

The principal bedroom is well-proportioned, providing ample space for bedroom furniture, and is served by an adjacent bathroom fitted with a white suite including a panelled bath with shower over, wash hand basin, and low-level WC. The second bedroom is also a comfortable double, enjoying excellent natural light and a front aspect.

The apartment is quietly positioned along a no-through lane at the top of the High Street. A convenient short-stay car park sits opposite the property, in addition to residents' parking. The large garage offers further versatility with space for a workshop area at the rear and benefits from a secure entrance door.

The property's construction is brick and tile.

The property has mains gas central heating, an electricity supply, mains water and mains drainage.

The broadband and mobile availability can be checked via the Ofcom's "broadband and mobile coverage checker" on their website.

#### ADDITIONAL INFORMATION

Council Tax Band: C

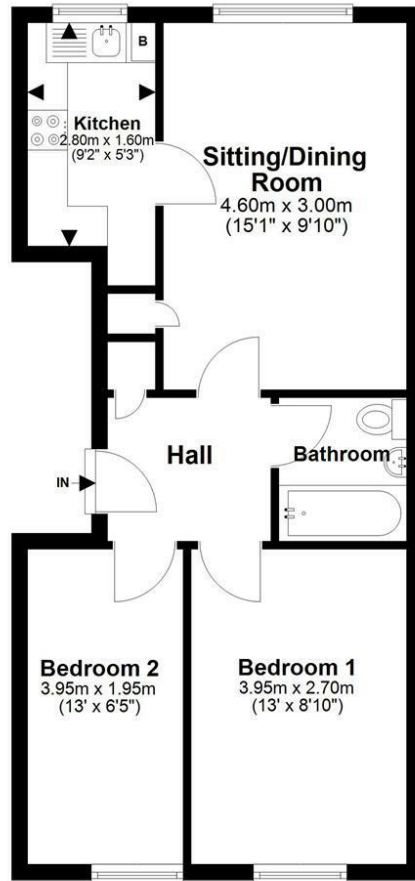
Furnishing Type: Unfurnished

Security Deposit: £1,269

Available From: 23rd April 2026

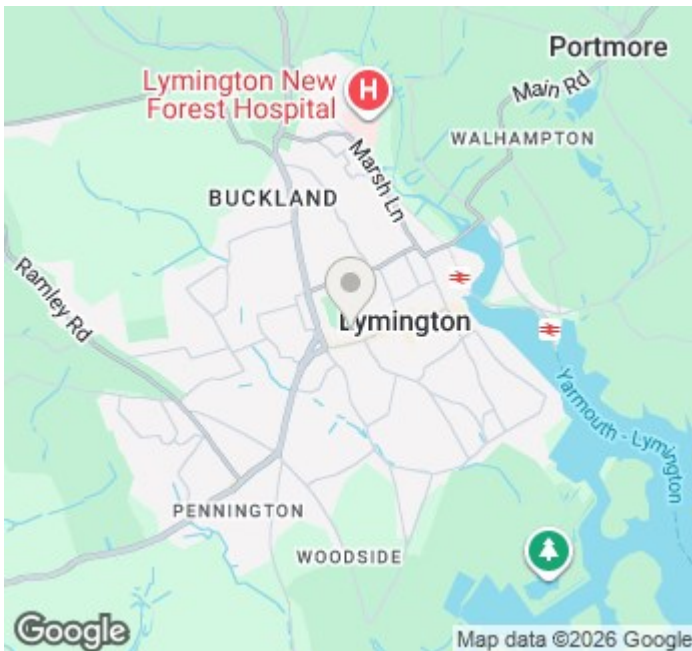


### First Floor



Approx Gross Internal Area  
46.3 sqm / 498.5 sqft

Illustration for identification purposes only; measurements are approximate, not to scale. www.fpusketch.co.uk  
Plan produced using PlanUp.



### Energy Efficiency Rating

	Current	Potential
Very energy efficient - lower running costs		
(92 plus) <b>A</b>		
(81-91) <b>B</b>		
(69-80) <b>C</b>		<b>77</b>
(55-68) <b>D</b>	<b>66</b>	
(39-54) <b>E</b>		
(21-38) <b>F</b>		
(1-20) <b>G</b>		
Not energy efficient - higher running costs		
<b>England &amp; Wales</b>	EU Directive 2002/91/EC	

Agents Note: Whilst every care has been taken to prepare these particulars, they are for guidance purposes only. All measurements are approximate and are for general guidance purposes only and whilst every care has been taken to ensure their accuracy, they should not be relied upon and potential buyers/tenants are advised to recheck the measurements.



# SPENCERS

LETTINGS

## ABOUT US

As the leading independent letting agency in the New Forest and surrounding areas, Spencers offers tenants a friendly, reliable and highly knowledgeable service. With offices across the region, including Lymington, Highcliffe, Brockenhurst, Burley, Ringwood, and Romsey, our local teams are here to help you find the right home and support you throughout your tenancy.

Our lettings teams live and work within the Forest and its nearby towns. This means you benefit from genuine local insight from nearby schools and transport links to community life and coastal or countryside surroundings.

We work closely with our landlords and manage a wide range of homes across the Forest and surrounding towns. We have memberships with Safe Agent, the Property Ombudsmen, and the Tenancy Deposit Scheme (TDS) ensuring your tenancy is handled professionally, transparently and with your best interests in mind.



Please contact us on the below:

Lymington 01590 624814

Highcliffe 01425 205000

Romsey 01794 331433

[lettings@spencersproperty.co.uk](mailto:lettings@spencersproperty.co.uk)

[www.spencersproperty.com](http://www.spencersproperty.com)