



Clapham Road, SW9

£1,695,000

An imposing five bedroom, Grade II listed Georgian home in excess of 3000sqft. This versatile home offers an abundance of reception space and a maintenance free rear courtyard garden.

Conveniently located within a short walk of Oval tube station, this well connected spot has access to regular bus links providing quick access into the West and the City. There are a number local shops, cafés and access to the green space of Kennington Park.

Features

- Grade II listed
- Five Double Bedrooms
- Four Reception Rooms
- Excellent Location
- Courtyard Garden
- Bright and Spacious



Clapham Road, SW9

This impressive house is set back from the road behind a walled front garden which still retain the original vaults beneath. The raised ground floor entrance leads into a double length reception room, benefitting from two large sash windows that draw in lots of natural light. The lower ground floor has a stylish kitchen to the front which is perfect for those who love to cook and entertain. There is a family room at the rear with access onto the courtyard garden. The first floor has another large reception room to the front and a double bedroom to the rear.

The second floor has the principal bedroom to the front, benefitting from a beautiful original marble fireplace and a very smart en-suite bathroom with roll top bath and large shower cubicle. To the rear is another double bedroom with west facing views and an ensuite shower room. The top floor has two more double bedrooms that are served by two bathrooms.

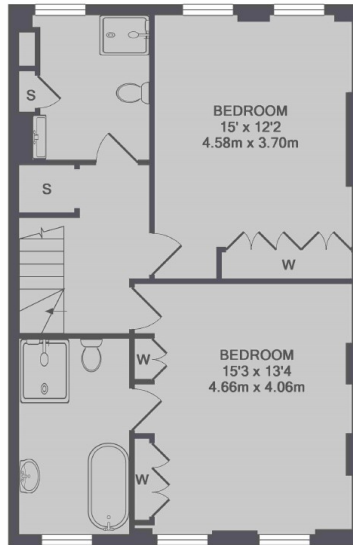
The house is a happy mix of traditional and modern finishes, benefitting from well proportioned rooms throughout providing flexible living



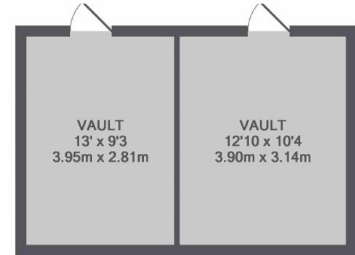
Clapham Road, London, SW9



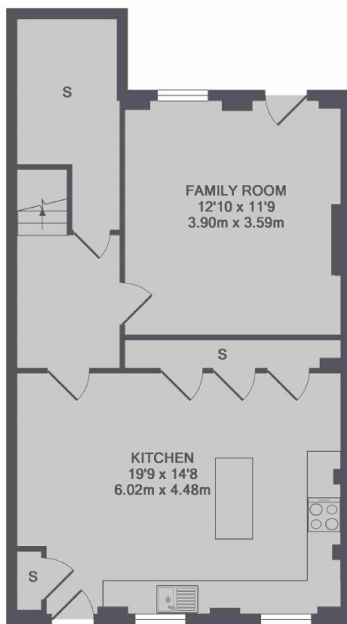
2ND FLOOR



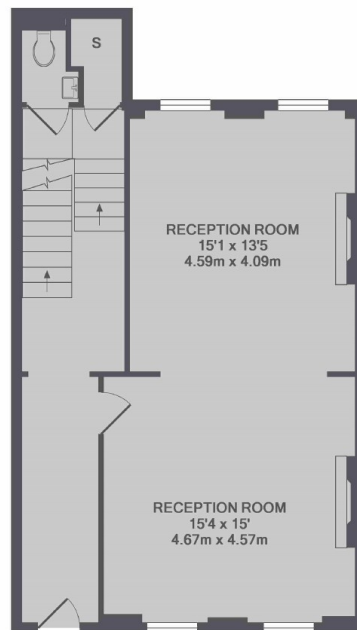
3RD FLOOR



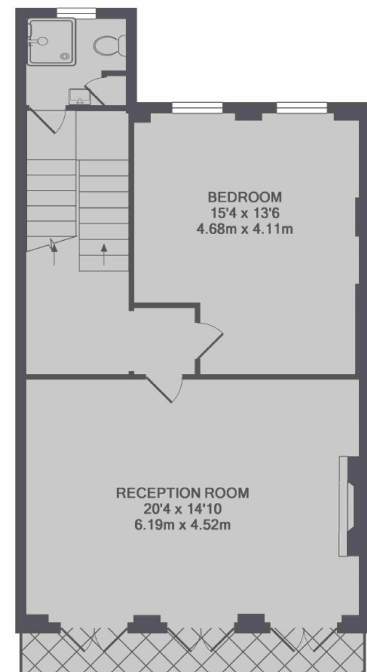
VAULT



LOWER GROUND FLOOR



GROUND FLOOR



1ST FLOOR

TOTAL APPROX. FLOOR AREA 3221 SQ.FT. (299.2 SQ.M.)

VAULT TOTAL APPROX. FLOOR AREA 253 SQ.FT. (23.5 SQ.M.)