



www.chrystals.co.im

Burley, Dreemskerry Road, Maughold, IM7 1BF
Asking Price £495,000

Burley, Dreemskerry Road, Maughold, IM7 1BF

Asking Price £495,000

A detached, mid century bungalow which has been extended to provide flexible accommodation in a superb rural setting with fine views over Maughold. Expansive mature gardens surround with garage and timber greenhouse. Some updating will be required but the property is a great "blank canvas". Presently 4 bedrooms but scope for internal alteration on both first and second floors, subject to necessary consents. Viewing essential.



LOCATION

From Ramsey travel southwards on the A2 Coast Road towards Laxey. Take the second turning to Maughold signposted Dreemskerry. Continue along this road for approx 1 mile and the property can be found on the left hand side, clearly identified by our For Sale Board.

ENTRANCE HALL

13' 5" x 14' 1" (4.1m x 4.3m)

CLOAKROOM

9' 6" x 8' 10" (2.9m x 2.7m)

BATHROOM

10' 2" x 5' 3" (3.1m x 1.6m)

KITCHENETTE

12' 2" x 10' 6" (3.7m x 3.2m)

SIDE PORCH

WC

LOUNGE

21' 0" x 14' 9" (6.4m x 4.5m)

KITCHEN

14' 9" x 14' 1" (4.5m x 4.3m)

UTILITY

4' 3" x 9' 10" (1.3m x 3m)

INNER HALLWALL

13' 5" x 5' 3" (4.1m x 1.6m)

BEDROOM

13' 9" x 12' 10" (4.2m x 3.9m)

BEDROOM

12' 2" x 15' 5" (3.7m x 4.7m)

BATHROOM

6' 3" x 9' 10" (1.9m x 3m)

FIRST FLOOR

LANDING

8' 2" x 10' 6" (2.5m x 3.2m)

BEDROOM

12' 2" x 8' 10" (3.7m x 2.7m)

HALL

OFFICE/BEDROOM

10' 2" x 8' 10" (3.1m x 2.7m)

STORAGE

10' 2" x 6' 7" (3.1m x 2m)

OUTSIDE

Pavioured driveway leading down towards the Single Garage. Stone wall to front boundary with mature shrubs and plants to borders. Glazed potting shed, greenhouse to side aspect. Sloping lawns to rear with mature plants, shrubs and trees.

SERVICES

Mains water and electricity. Private drainage. Oil central heating.

VIEWING

Viewing is strictly by appointment through CHRYSTALS. Please inform us if you are unable to keep appointments.

POSSESSION

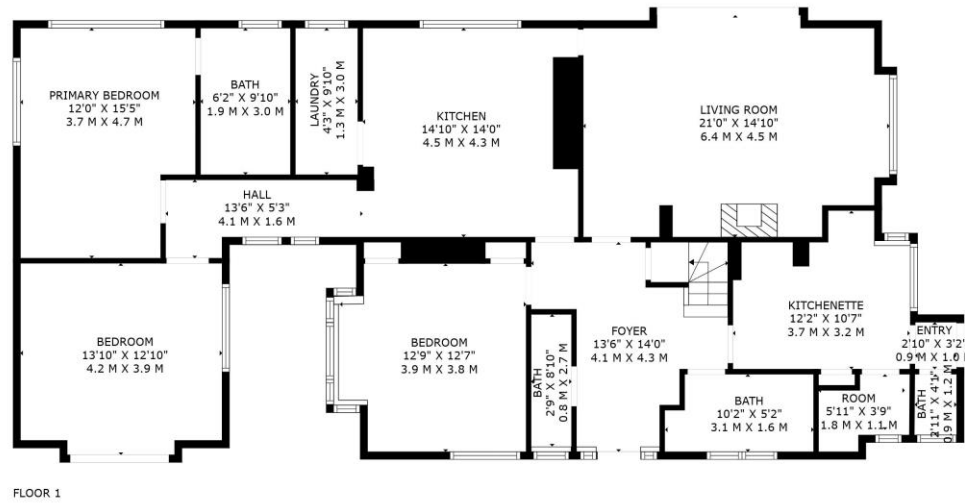
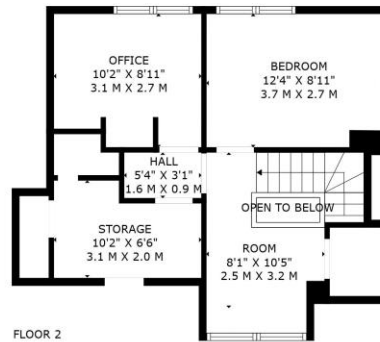
Vacant possession on completion of purchase. The company do not hold themselves responsible for any expenses which may be incurred in visiting the same should it prove unsuitable or have been let, sold or withdrawn. DISCLAIMER - Notice is hereby given that these particulars, although believed to be correct do not form part of an offer or a contract. Neither the Vendor nor Chrystals, nor any person in their employment, makes or has the authority to make any representation or warranty in relation to the property. The Agents whilst endeavouring to ensure complete accuracy, cannot accept liability for any error or errors in the particulars stated, and a prospective purchaser should rely upon his or her own enquiries and inspection. All Statements contained in these particulars as to this property are made without responsibility on the part of Chrystals or the vendors or lessors.











TOTAL: 1921 sq. ft, 178 m2
 FLOOR 1: 1604 sq. ft, 149 m2, FLOOR 2: 317 sq. ft, 29 m2
 EXCLUDED AREAS: UNDEFINED: 43 sq. ft, 4 m2, STORAGE: 58 sq. ft, 5 m2, OPEN TO BELOW: 7 sq. ft, 1 m2,
 LOW CEILING: 15 sq. ft, 2 m2, WALLS: 157 sq. ft, 15 m2

FLOOR PLAN CREATED BY INVISION MEDIA & MARKETING. MEASUREMENTS DEEMED HIGHLY RELIABLE BUT NOT GUARANTEED.



Since 1854



DOUGLAS
 31 Victoria Street
 Douglas IM1 2SE
 T. 01624 623778
 E. douglas@chrystals.co.im

PORT ERIN
 23 Station Road
 Port Erin IM9 6RA
 T. 01624 833903
 E. porterin@chrystals.co.im

COMMERCIAL
 Douglas Office: 01624 625100, commercial@chrystals.co.im

RENTALS
 Douglas Office: 01624 625300, douglasrentals@chrystals.co.im