

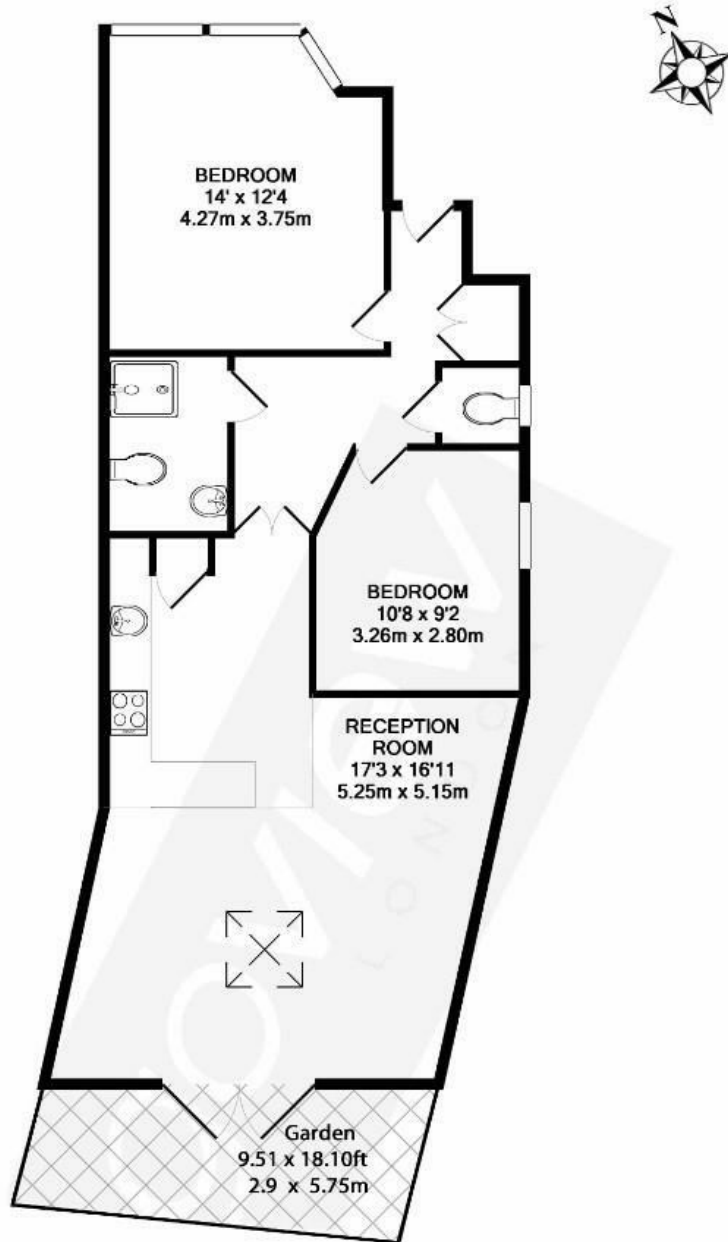


Lexden Road, W3

Available now and presented to an exceptional standard, this two bedroom flat boasts stunning interiors with a delightful private garden.

- Available now
- Private garden
- Walking distance to local amenities
- One off road parking space
- Open plan living room
- Modern interior

£2,400 PCM



TOTAL APPROX. FLOOR AREA 756 SQ.FT. (70.2 SQ.M.)

Whilst every attempt has been made to ensure the accuracy of the floor plan contained here, measurements of doors, windows, rooms and any other items are approximate and no responsibility is taken for any error, omission, or mis-statement. This plan is for illustrative purposes only and should be used as such by any prospective purchaser. The services, systems and appliances shown have not been tested and no guarantee as to their operability or efficiency can be given.
Made with Metropix ©2019

Energy Efficiency Rating		Current	Potential
Very energy efficient - lower running costs			
(92 plus) A			
(81-91) B			
(69-80) C		76	77
(55-68) D			
(39-54) E			
(21-38) F			
(1-20) G			
Not energy efficient - higher running costs			
England & Wales	EU Directive 2002/91/EC		