



Clapham Common South Side, £400,000

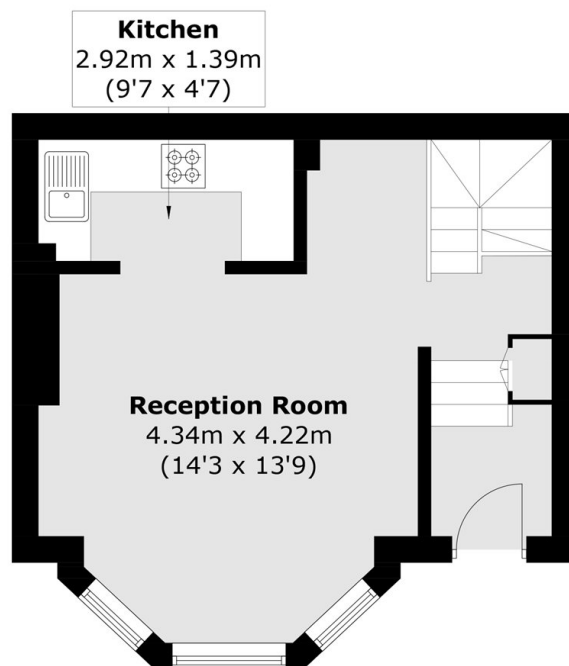
This fantastic split-level period conversion is enviably positioned overlooking Clapham Common, extends to 574 sq ft, and is presented in excellent condition throughout. Arranged to include a bright reception room with a bay window and ample room to dine, a well-equipped adjoining kitchen, a double bedroom, and a bathroom. Offered to the market with a share of the freehold and no onward chain.

Situated on Clapham Common South Side between Lynette Avenue and Cavendish Road, the property is ideally positioned for the many shops, restaurants and bars of the Abbeville Village & Clapham Old Town along with Clapham South station (Northern Line).

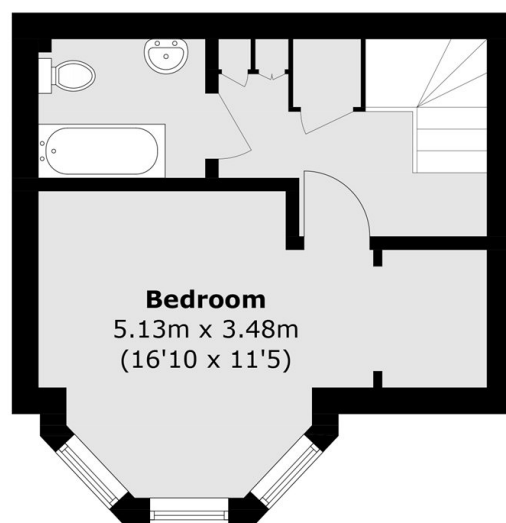
Features

- Period Conversion
- Bright Reception Room
- Integrated Kitchen
- Double Bedroom
- Share Of Freehold
- Chain Free

Clapham Common South Side, London, SW4



Ground Floor



Lower Ground Floor

Total area (approx.): 53.4 sq. m (574.8 sq. ft)