



**Manor Gardens Close, Loughborough**

**welcome to**

## **Manor Gardens Close, Loughborough**

A well-presented two-bedroom, two-bathroom first floor apartment offering flexible living throughout, featuring a generous living room with Juliet balcony, contemporary kitchen, allocated parking and a master bedroom with en-suite.

### **Entrance**

The entrance hallway has doors to all rooms and has laminate flooring.

### **Lounge**

14' 10" x 12' 1" ( 4.52m x 3.68m )

The living area with wooden effect laminate flooring, neutral décor and French doors opening onto both Juliet balconies. Plenty of room for both lounge furniture and a dining table.

### **Kitchen**

9' 6" x 6' 10" ( 2.90m x 2.08m )

Well equipped kitchen featuring light wood units, dark worktops, integrated electric oven, stainless steel extractor and ample storage.

### **Bedroom One**

11' 10" x 9' 4" ( 3.61m x 2.84m )

A generous double bedroom with fitted wardrobes offering excellent storage. Access to the en-suite shower room. Neutral walls and carpet.

### **Ensuite**

Stylish shower room with walk-in shower, pedestal sink, WC and tiled flooring.

### **Bedroom Two**

13' 2" x 8' 8" ( 4.01m x 2.64m )

A good-sized second bedroom with neutral décor and a window overlooking the street.

### **Bathroom**

Contemporary family bathroom with white suite, shower-over-bath, pedestal basin and WC. Contrasting tiled walls and flooring create a clean, modern finish.

### **Outside**

Externally, the development benefits from allocated parking and visitor space.





***view this property online*** [williamhbrown.co.uk/Property/LBH115611](http://williamhbrown.co.uk/Property/LBH115611)



welcome to

## Manor Gardens Close, Loughborough

- Two-bedroom First Floor Apartment
- Master bedroom with fitted wardrobes and en-suite
- Living/dining room with two Juliet balconies
- Modern fitted kitchen with integrated oven and ample worktop space
- Contemporary family bathroom plus additional en-suite

Tenure: Leasehold EPC Rating: C

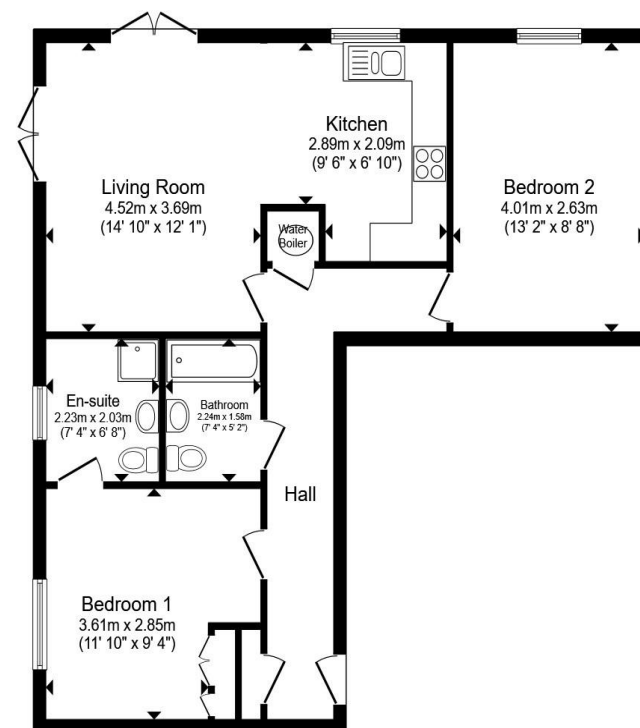
Council Tax Band: B Service Charge: 2400.00

Ground Rent: 220.00

This is a Leasehold property with details as follows; Term of Lease 125 years from 01 Jan 2006. Should you require further information please contact the branch. Please Note additional fees could be incurred for items such as Leasehold packs.

offers in excess of

**£125,000**



Floor Plan

Total floor area 76.4 m<sup>2</sup> (822 sq.ft.) approx

This floor plan is for illustrative purposes only. It is not drawn to scale. Any measurements, floor areas (including any total floor area), openings and orientation are approximate. No details are guaranteed, they cannot be relied upon for any purpose and they do not form part of any agreement. No liability is taken for any error, omission or misstatement. A party must rely upon its own inspection(s). Powered by [www.propertybox.io](http://www.propertybox.io)



view this property online [williamhbrown.co.uk/Property/LBH115611](http://williamhbrown.co.uk/Property/LBH115611)



Property Ref:  
LBH115611 - 0007

1. MONEY LAUNDERING REGULATIONS Intending purchasers will be asked to produce identification documentation at a later stage and we would ask for your co-operation in order that there is no delay in agreeing the sale. 2. These particulars do not constitute part or all of an offer or contract. 3. The measurements indicated are supplied for guidance only and as such must be considered incorrect. Potential buyers are advised to recheck measurements before committing to any expense. 4. We have not tested any apparatus, equipment, fixtures or services and it is in the buyers interest to check the working condition of any appliances. 5. Where an EPC, or a Home Report (Scotland only) is held for this property, it is available for inspection at the branch by appointment. If you require a printed version of a Home Report, you will need to pay a reasonable production charge reflecting printing and other costs. 6. We are not able to offer an opinion either written or verbal on the content of these reports and this must be obtained from your legal representative. 7. Whilst we take care in preparing these reports, a buyer should ensure that his/her legal representative confirms as soon as possible all matters relating to title including the extent and boundaries of the property and other important matters before exchange of contracts.

William H Brown is a trading name of Sequence (UK) Limited which is registered in England and Wales under company number 4268443, Registered Office is Cumbria House, 16-20 Hockliffe Street, Leighton Buzzard, Bedfordshire, LU7 1GN. VAT Registration Number is 500 2481 05.

william h brown



**01509 214686**



[loughborough@williamhbrown.co.uk](mailto:loughborough@williamhbrown.co.uk)



22-23 Swan Street, LOUGHBOROUGH,  
Leicestershire, LE11 5BL



[williamhbrown.co.uk](http://williamhbrown.co.uk)

