



4 Parklands, Corntown

£599,950 Freehold

Large Four Bedroom Detached Family Home • Potential To Extend, Subject To Planning Permission • Two Reception Rooms Offering Spacious Lounge & Versatile Second Reception Room • Kitchen With Ample Storage, Utility Room, WC & Wet Room • Four Bedrooms & Family Bathroom To First Floor • Situated Within A Popular Residential Cul-De-Sac Location • Outstanding South Facing Rear Garden, Bordering Onto Farmland • Offered With No Ongoing Chain • Integral Double Garage With Off-Road Parking, Side Gate Access On Both Sides Leading To Rear Garden • Close Proximity To St Johns Priory, Local Shops, Pubs & A Stone Throw Away From Ogmores & Southerndown Beaches

DanielMatthew
ESTATE AGENTS



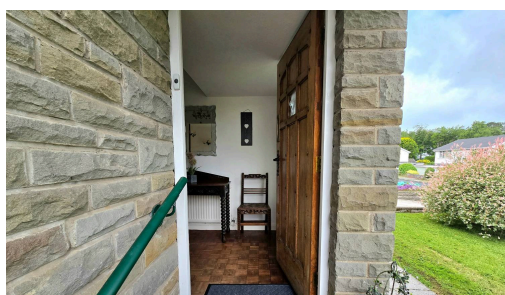
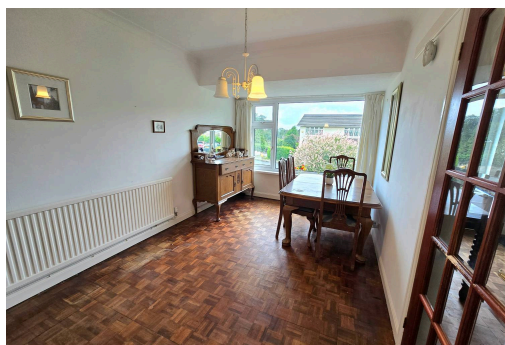
Spacious four-bed detached home in sought-after cul-de-sac. Two receptions, utility, double garage, large south-facing garden, no chain. Near beaches, countryside, shops, schools, and transport.

Council Tax band: F

Tenure: Freehold



- › Large Four Bedroom Detached Family Home
- › Potential To Extend, Subject To Planning Permission
- › Two Reception Rooms Offering Spacious Lounge & Versatile Second Reception Room
- › Kitchen With Ample Storage, Utility Room, WC & Wet Room
- › Four Bedrooms & Family Bathroom To First Floor
- › Situated Within A Popular Residential Cul-De-Sac Location
- › Outstanding South Facing Rear Garden, Bordering Onto Farmland
- › Offered With No Ongoing Chain





Entrance Hallway

Enter via a grand wooden door leading into a beautiful entrance hallway, UPVC double glazed window to front aspect, papered ceiling, papered walls, block parquet flooring, staircase leading to first floor, doors leading into;-

Lounge

UPVC double glazed window to front aspect, UPVC double glazed French doors with glass side panels leading to a generous rear garden, papered ceiling with coving, papered walls, block parquet flooring, two radiator, electric fireplace with surround. A beautiful large Lounge, ideal for hosting family/friends.

Dining Room

UPVC double glazed window to front aspect, papered ceiling with coving, papered walls, block parquet flooring, serving hatch, radiator. An versatile room which can be used as a reception room, home office, playroom or snug.

Kitchen

UPVC double glazed window to rear aspect overlooking an outstanding rear garden, UPVC double glazed French doors leading to rear garden. textured ceiling, partially textured and plastered walls, tiled flooring, tiled splashback, a range of matching wall and base units with complimentary work surfaces, composite sink with drainer and mixer tap, electric oven with four ring electric hob and extractor fan, plumbing for dishwasher, ample storage and space for dining table and chairs, radiator, door leading into;-





Utility Room

UPVC double glazed window to rear aspect, plastered ceiling, plastered walls, tiled flooring, radiator, base units with complimentary worksurfaces, circular stainless steel sink with drainer and mixer tap, plumbing for washing machine, space for fridge/freezer, door leading into Inner Hallway.

Inner Hallway

UPVC double glazed obscured door leading to side garden, plastered ceiling, plastered walls, tiled flooring, doors leading into Cloakroom, wet room and integral door into double garage.

Cloakroom

UPVC double glazed obscured window to rear aspect, plastered ceiling, tiled walls, tiled flooring, two piece suite comprising low level WC and corner floating wash hand basin.



Wet Room

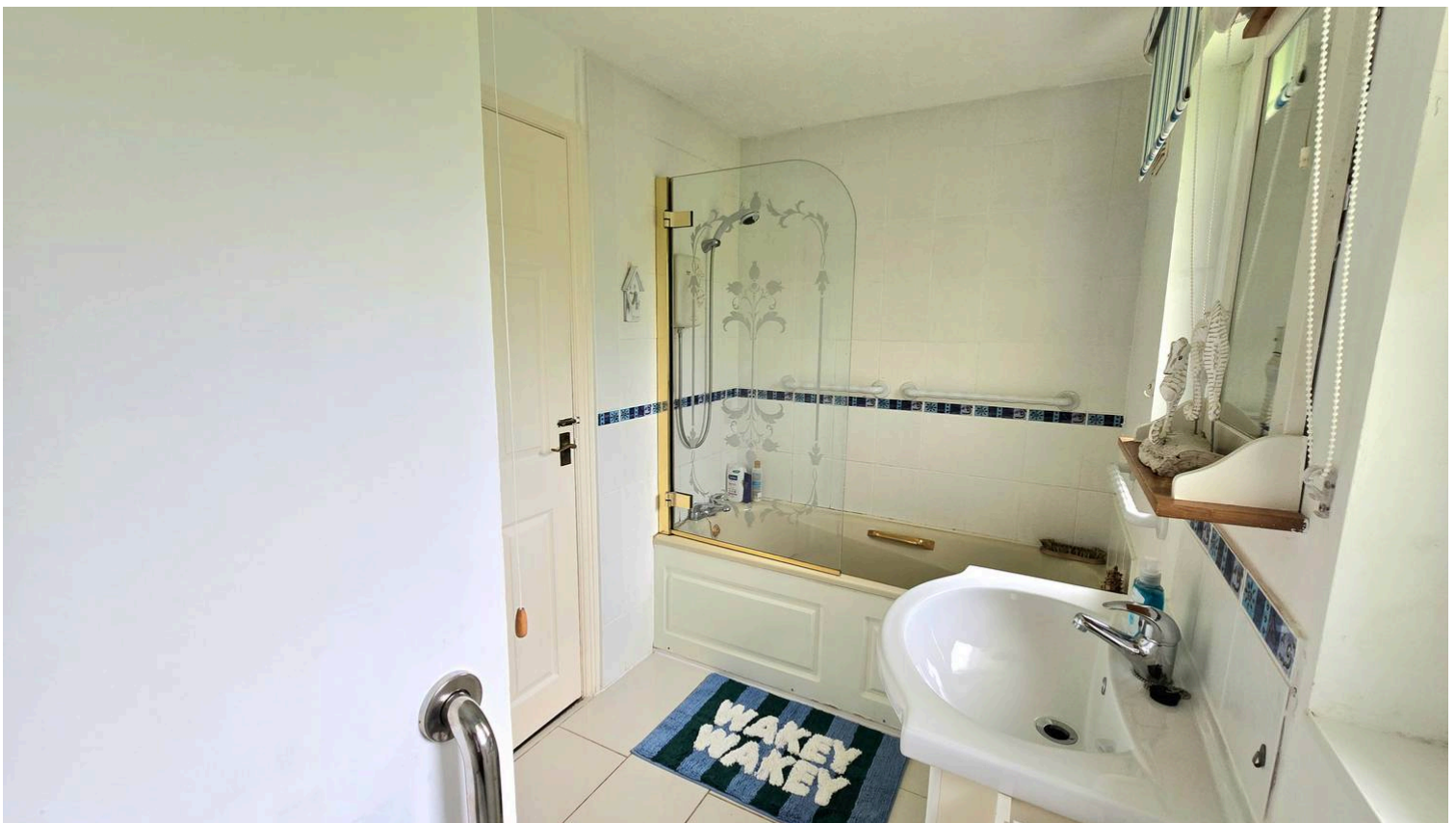
UPVC double glazed obscured window to rear aspect, plastered ceiling, tiled walls, tiled flooring with wet room shower, electric shower and extractor fan.

Family Bathroom

Two UPVC double glazed obscured windows to rear aspect, textured ceiling, plastered walls, tiled splashback, tiled flooring, three piece suite comprising low level WC, floating wash hand basin inset into vanity unit, panelled bath with mixer tap and electric shower, chrome heated towel rail.

Bedroom One

UPVC double glazed window to front aspect, papered





Bedroom One

UPVC double glazed window to front aspect, papered ceiling, papered walls, original wooden flooring, built in double wardrobe, radiator, pedestal wash hand basin.

Bedroom Two

UPVC double glazed window to front aspect, papered ceiling, plastered walls, original wooden flooring, radiator, pedestal wash hand basin, built in double fitted wardrobes.

Bedroom Three

UPVC double glazed window to rear aspect, plastered ceiling, plastered walls, original wooden flooring, radiator, single built in wardrobe.

Bedroom Four

UPVC double glazed window to rear aspect, plastered ceiling, plastered walls, fitted carpet, radiator.



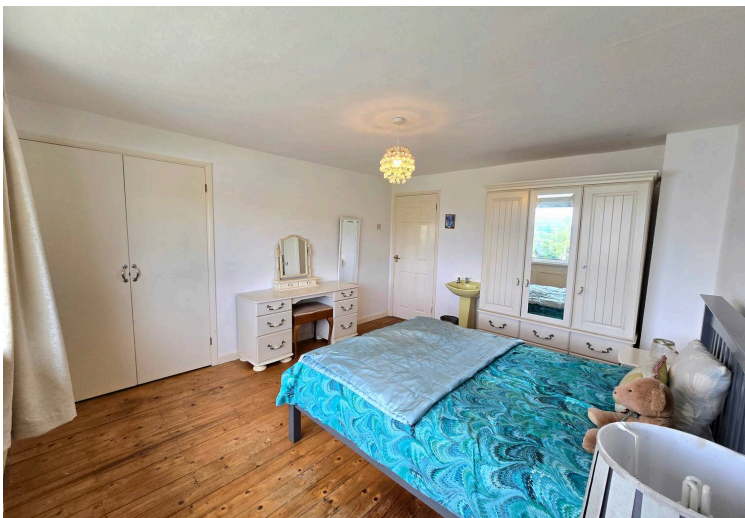
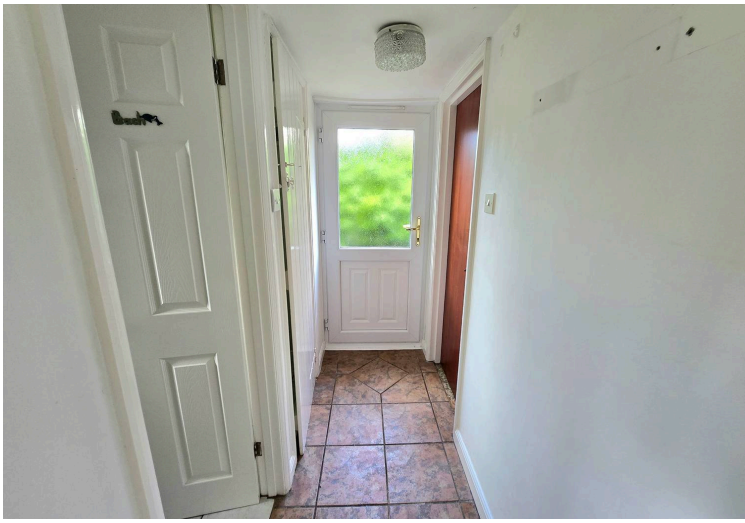
FRONT GARDEN

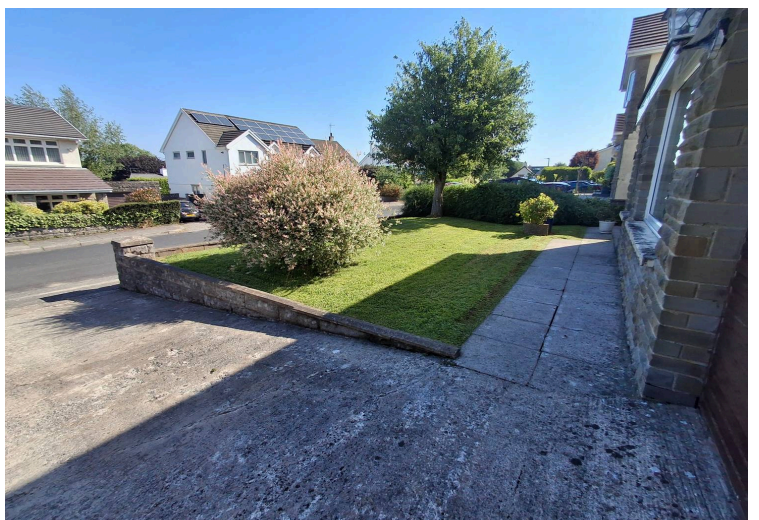
Front Garden - Brick boundaries, Driveway to double garage, paved pathway leading to front door and side gates to both sides of the property, laid to lawn with mature shrubs/tree.

REAR GARDEN

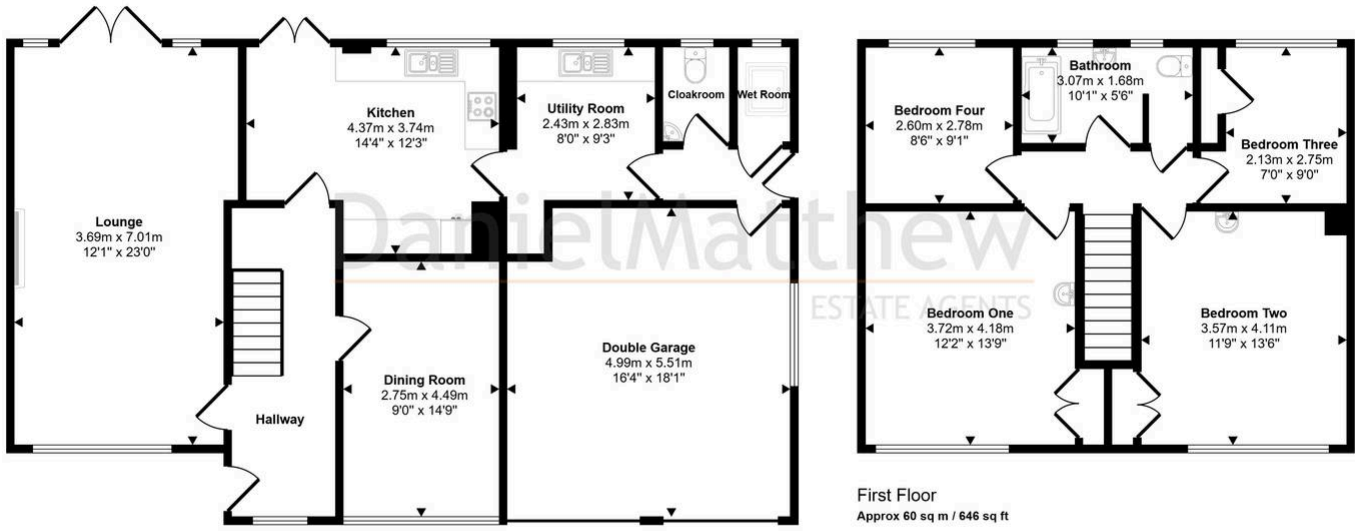
A large, south facing rear garden bordering onto agricultural land. Comprising a long patio area with steps leading up to large laid to lawn area with mature plants, shrubs and trees, outside water tap, side access to both sides of the property leading to front garden.







Approx Gross Internal Area
170 sq m / 1826 sq ft



This floorplan is only for illustrative purposes and is not to scale. Measurements of rooms, doors, windows, and any items are approximate and no responsibility is taken for any error, omission or mis-statement. Icons of items such as bathroom suites are representations only and may not look like the real items. Made with Made Snappy 360.