



**Arran Road, Maidstone, ME15 9TE**  
**Price £700,000**



\*\*\*NO FORWARD CHAIN\*\*\*

FOUR BEDROOM DETACHED FAMILY HOME SET ON A GENEROUS PLOT OF APPROXIMATELY 1/3 ACRE, POSITIONED IN A HIGHLY SOUGHT-AFTER CUL-DE-SAC WITHIN WALKING DISTANCE OF LOOSE PRIMARY SCHOOL.

This excellent family home offers versatile and well-proportioned accommodation throughout. The ground floor comprises an entrance porch leading into a welcoming hallway, a front-facing lounge, and a kitchen and dining room the rear of the property along with a utility room and ground floor cloakroom. There is also a useful study to the front.

Upstairs, the property benefits from four double bedrooms and a family bathroom, making it ideal for growing families.

Externally, the property sits on a substantial plot of approximately one-third of an acre. To the front, there is a driveway providing off-road parking, leading to a garage with a workshop to the rear. The beautifully maintained rear garden is a real highlight, featuring lawned areas, a patio, well-established hedging, and colourful flower beds.

Situated in the ever-popular village of Loose, the property is perfectly placed for families, falling within the catchment area for the highly regarded Loose Primary School. A range of local amenities are within easy walking distance, including Sainsbury's Local, the Post Office, and The Chequers Inn. For commuters, Staplehurst and Marden mainline stations are just a short drive away, offering regular services to London Bridge, Waterloo, and Cannon Street.

Viewing is highly recommended. Please contact Page & Wells Loose Office to arrange your appointment.



**GROUND FLOOR**

**Entrance Hall**

**Lounge 15'8" x 12'0" (4.80m x 3.67m)**

**Kitchen 11'9" x 9'9" (3.59m x 2.99m)**

**Utility Room 8'2" x 4'4" (2.50m x 1.34m)**

**Dining Room 13'8" x 12'1" (4.17m x 3.69m)**

**Study 11'5" x 8'1" (3.49m x 2.47m)**

**FIRST FLOOR**

**Bedroom 1 15'8" x 12'0" (4.78m x 3.68m)**

**Bedroom 2 13'7" x 12'0" (4.16m x 3.68m)**

**Bedroom 3 13'5" x 8'7" (4.10m x 2.63m)**

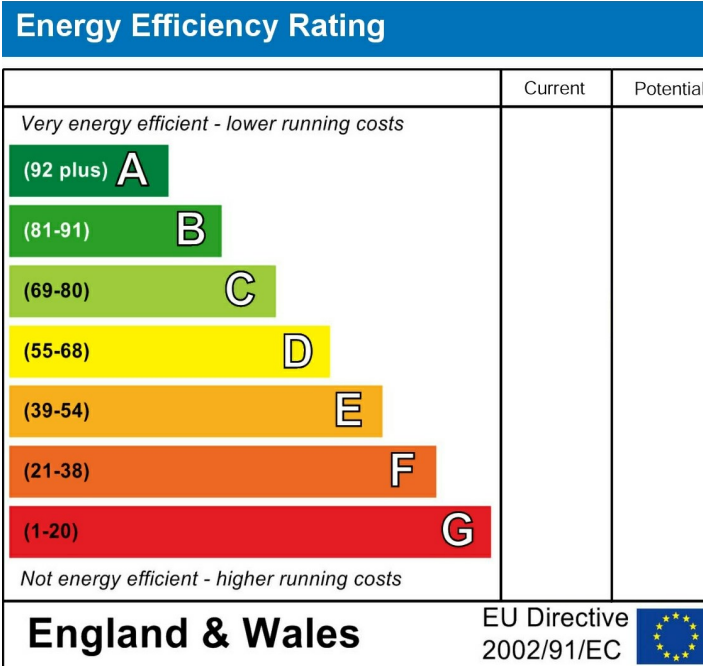
**Bedroom 4 10'9" x 8'6" (3.29m x 2.61m)**

**Family Bathroom**

**EXTERNALLY**

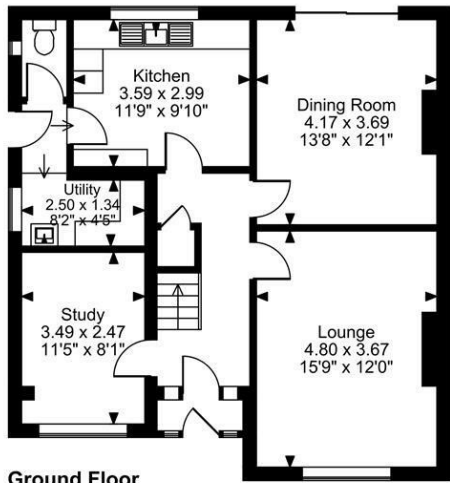
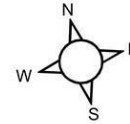
**Garage 17'0" x 9'7" (5.20m x 2.93m)**

**Workshop 15'8" x 9'7" (4.79m x 2.93m)**

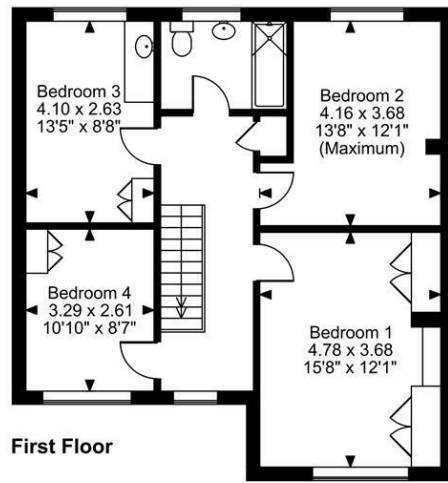


Page & Wells limited for themselves and for the vendors of this property whose agents they are give notice that: 1. These particulars do not constitute any part of, an offer or a contract. 2. All statements contained in these particulars as to this property are made without responsibility on the part of Page & Wells Limited or the Vendor. 3. None of the statements contained in these particulars as to the property is to be relied on as statements or representations of fact. 4. Any intending purchaser must satisfy himself by inspection or otherwise as to the correctness of each of the statements contained in these particulars. 5. The vendor does not make or give, and neither Page & Wells Limited nor any person in their employment has any authority to make or give any representation whatsoever in relation to this property. These particulars are supplied on the understanding that all negotiations are carried out throughout Page & Wells Limited. Properties with a reference prefixes EAA are those which Page & Wells Limited disclose an interest in accordance with the provisions of the Estates Agents Act 1979

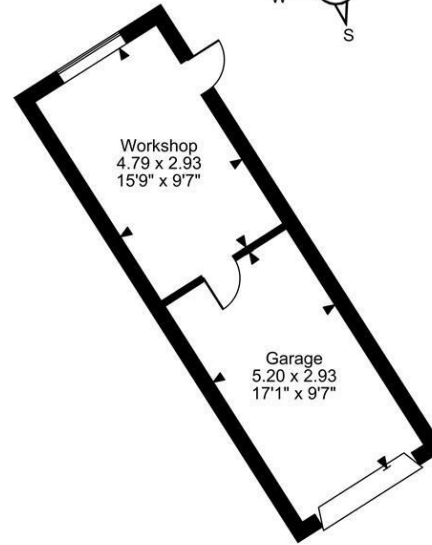
**Arran Road, Maidstone, Kent**  
**Approximate Gross Internal Area**  
**Main House = 1519 Sq Ft/141 Sq M**  
**Garage & Workshop = 319 Sq Ft/30 Sq M**  
**Total = 1838 Sq Ft/171 Sq M**



**Ground Floor**



**First Floor**



**FOR ILLUSTRATIVE PURPOSES ONLY - NOT TO SCALE**  
 The position & size of doors, windows, appliances and other features are approximate only.  
 © ehouse. Unauthorised reproduction prohibited. Drawing ref. dig/8687997/LCO

