



# Lennox Gardens

London, SW1X

£3,878.33 per month  
(£895 per week)

Newly redecorated and beautifully presented apartment of circa 703 sq ft, comprising part of an impressive period building on much sought-after Lennox Gardens.



# Lennox Gardens

London, SW1X

- Newly refurbished throughout
- Wood flooring
- High ceilings
- Large eat-in kitchen
- Lennox Gardens location

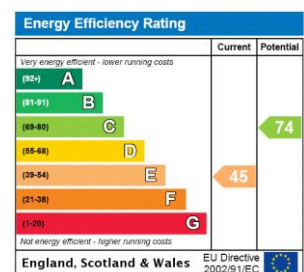


Newly redecorated and beautifully presented apartment of circa 703 sq ft, comprising part of an impressive period building on much sought-after Lennox Gardens.

The accommodation includes a spacious reception, separate eat-in kitchen with wood flooring, large double bedroom with high ceiling and built-in wardrobes and a modern bathroom suite.

Conveniently located for Knightsbridge tube and all of the amenities of Brompton Road and Sloane Square.

**Minimum Term:** 12 months  
**Deposit Required:** £4,475.00  
**Local Authority:** Royal Borough of Kensington & Chelsea  
**Council Tax Band:** G  
**EPC Rating:** E  
**Furnished**



### *Chestertons Knightsbridge & Belgravia Lettings*

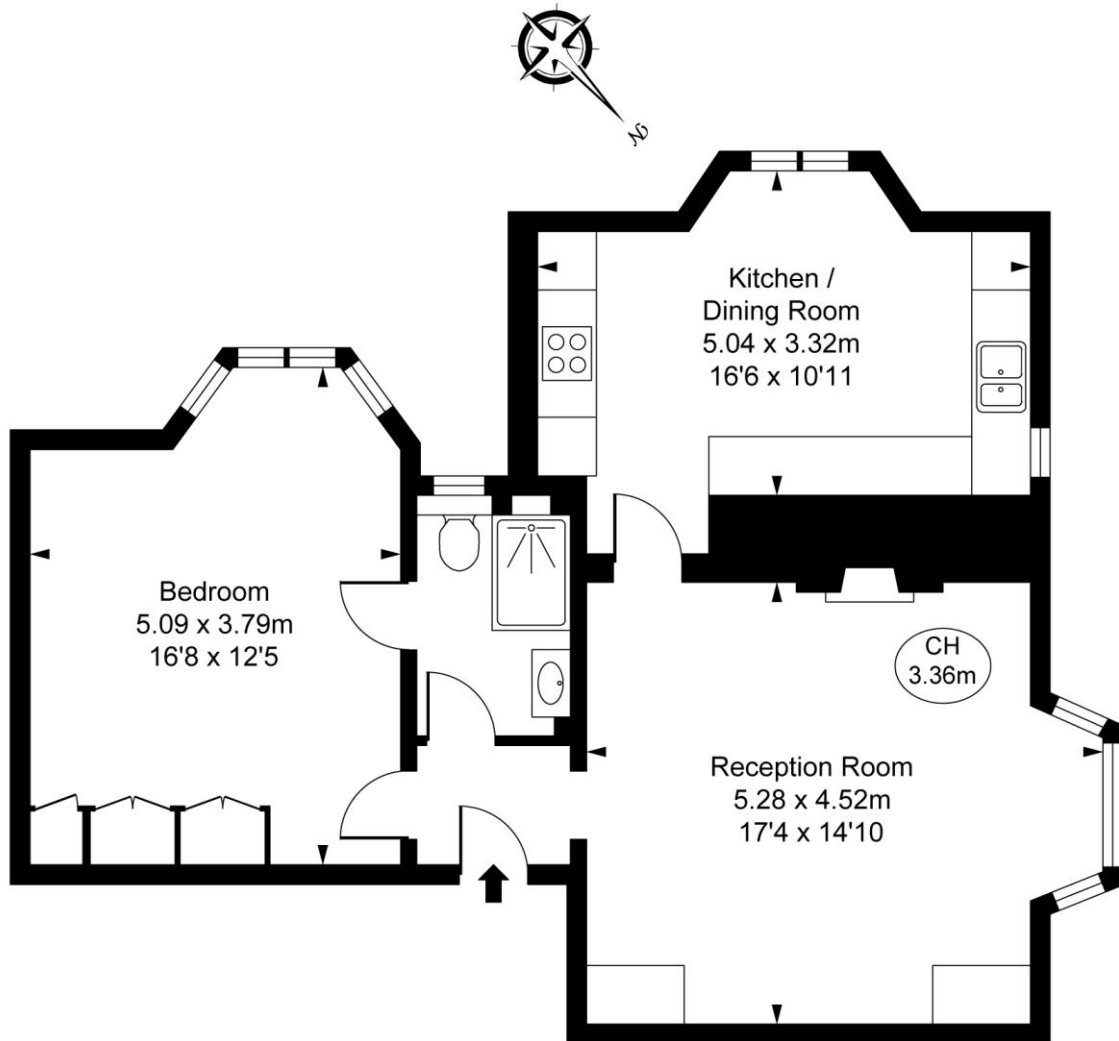
31 Lowndes Street  
 London  
 SW1X 9HX  
[knightsbridge@chestertons.co.uk](mailto:knightsbridge@chestertons.co.uk)  
 02072353530  
[chestertons.co.uk](http://chestertons.co.uk)

Additional tenant charges apply (fees apply to non-AST tenancies only)  
 Tenancy Agreement Fee: £300  
 References per Tenant/Guarantor: £60  
 Inventory check (approx. £100 – £250 inc. VAT)  
[chestertons.co.uk/property-to-rent/applicable-fees](http://chestertons.co.uk/property-to-rent/applicable-fees)

# Lennox Gardens, SW1X

Approximate Gross Internal Area  
65.29 sq m / 703 sq ft

( CH = Ceiling Heights )



Ground Floor

This plan is not to scale. It is for guidance and not for valuation purposes.  
All measurements and areas are approximate only, and have been prepared in accordance with the current edition of the RICS Code of Measuring Practice.  
© Fulham Performance

