



## ROMNEY HOUSE, SW1P

£775,000

This well-presented two-bedroom apartment is situated on the third floor of Romney House, offering approximately 810 sq ft of bright living space.

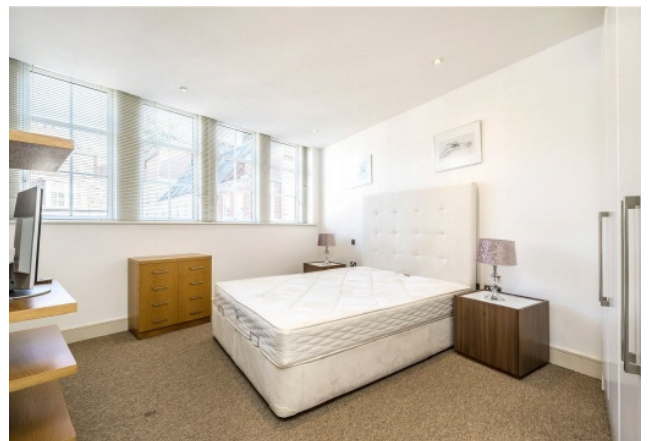
- 2 Bed
- 2 Bathrooms
- 3rd Floor
- 810 Sq Ft
- Westminster
- EPC: C



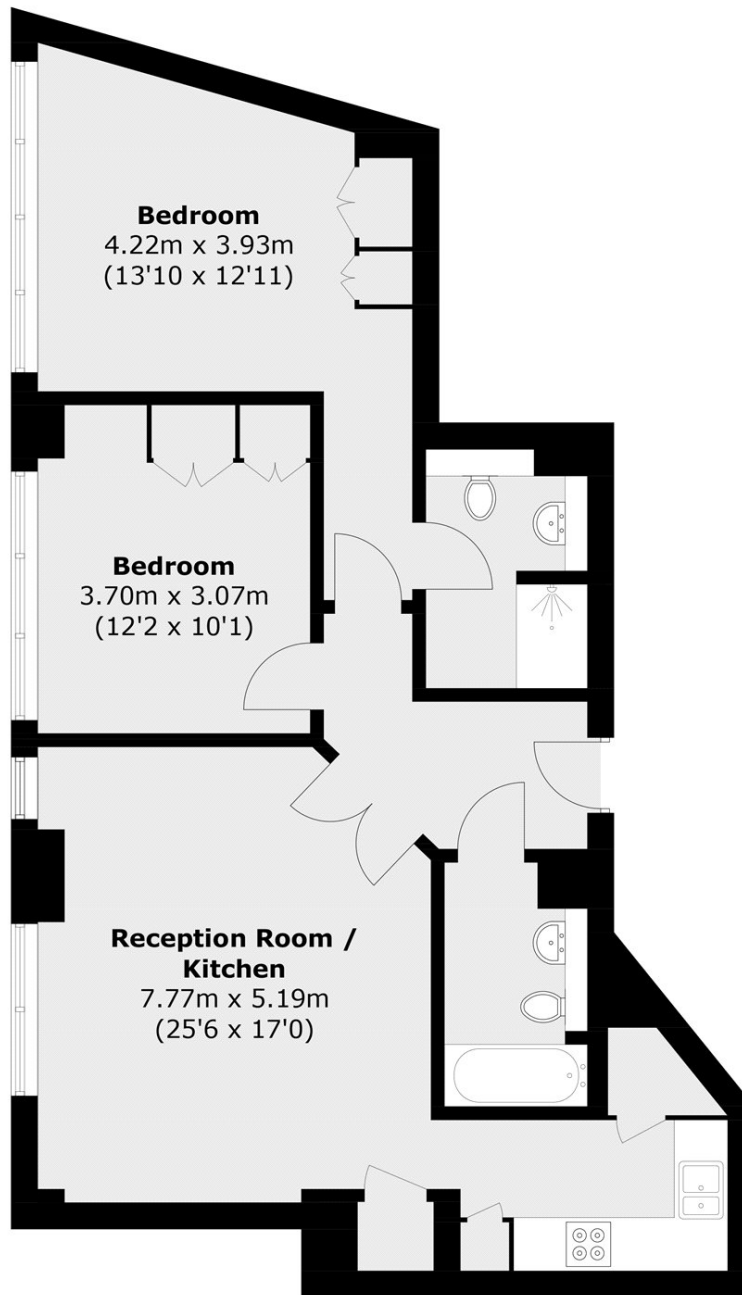
## ABOUT THE HOME

0.5 miles from Westminster Underground Station

0.7 miles from Victoria Station







Total area (approx.): 75.3 sq. m (810.5 sq. ft)

**LiFE RESIDENTIAL**

11 Flagstaff House, London,  
SW8 2LZ

Sales: 020 7476 1408

Lettings: 020 7582 7989

Energy Rating: C. We aim to make our particulars both accurate and reliable. However they are not guaranteed; nor do they form part of an offer or contract. If you require clarification on any points then please contact us, especially if you're traveling some distance to view. Please note that appliances and heating systems have not been tested and therefore no warranties can be given as to their good working order.