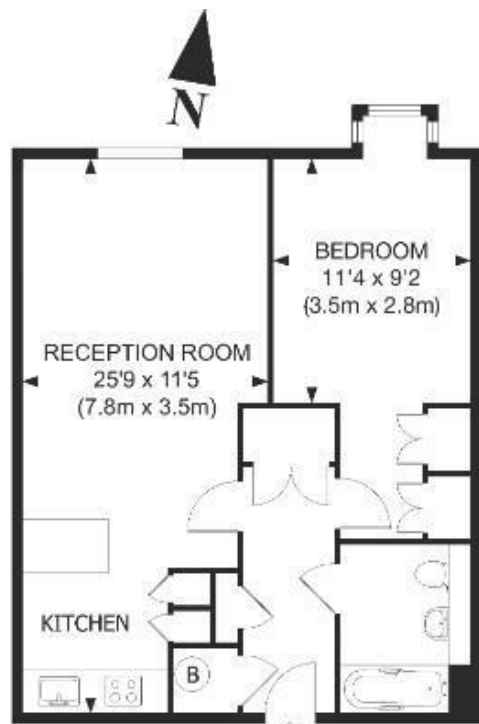




Moore House , Grosvenor Waterside , Gatliff Road SW1W 8DT

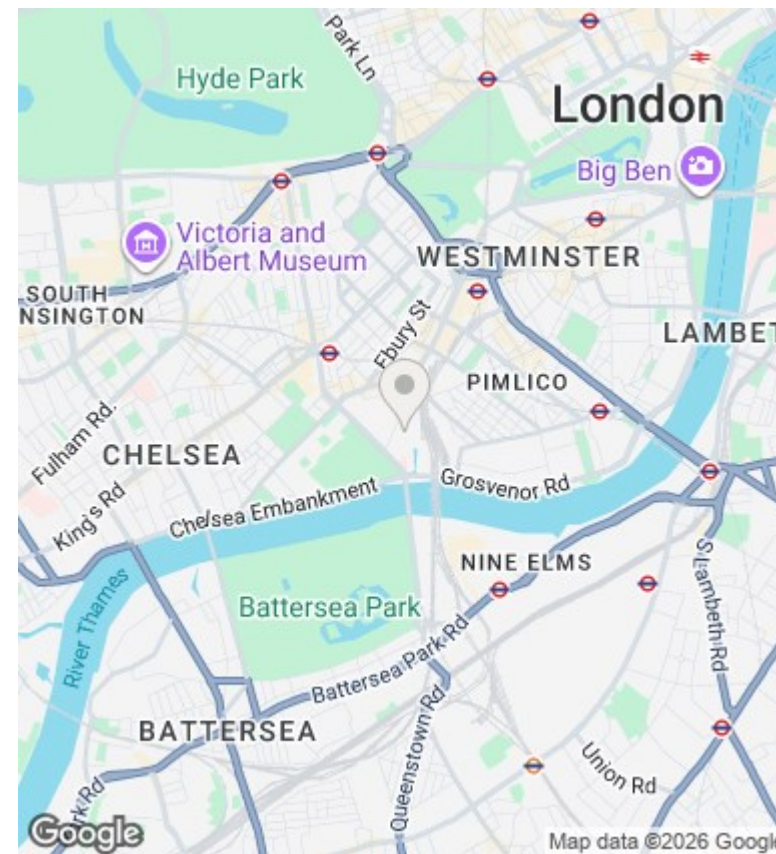
£715,000

- 24H CONCIERGE
- UNDER FLOOR HEATING
- MOMENTS AWAY FROM BATTERSEA PARK
- VIDEO VIEWING AVAILABLE
- WALKING DISTANCE TO SLOANE SQUARE , KINGS ROAD , KNIGHTSBRIDGE AND BELGRAVIA
- ONSITE RESTAURANT AND FOOD SHOOP
- RESIDENCE ONLY GYM AND SPA
- SHORT WALK TO TRANSPORT LINKS FROM SLOANE SQUARE AND VICTORIA



THIRD FLOOR

APPROX. GROSS INTERNAL FLOOR AREA 540 SQ FT / 50 SQ M



Viewings

Viewings by arrangement only.
Call 02077225022 to make an appointment.

Council Tax Band

EPC Rating:

C

Energy Efficiency Rating		
	Current	Potential
<i>Very energy efficient - lower running costs</i>		
(92 plus) A		
(81-91) B		
(69-80) C	78	78
(55-68) D		
(39-54) E		
(21-38) F		
(1-20) G		
<i>Not energy efficient - higher running costs</i>		
England & Wales	EU Directive 2002/91/EC	