

# SNELLERS

ESTATE AGENTS



## Lower Mortlake Road, TW9

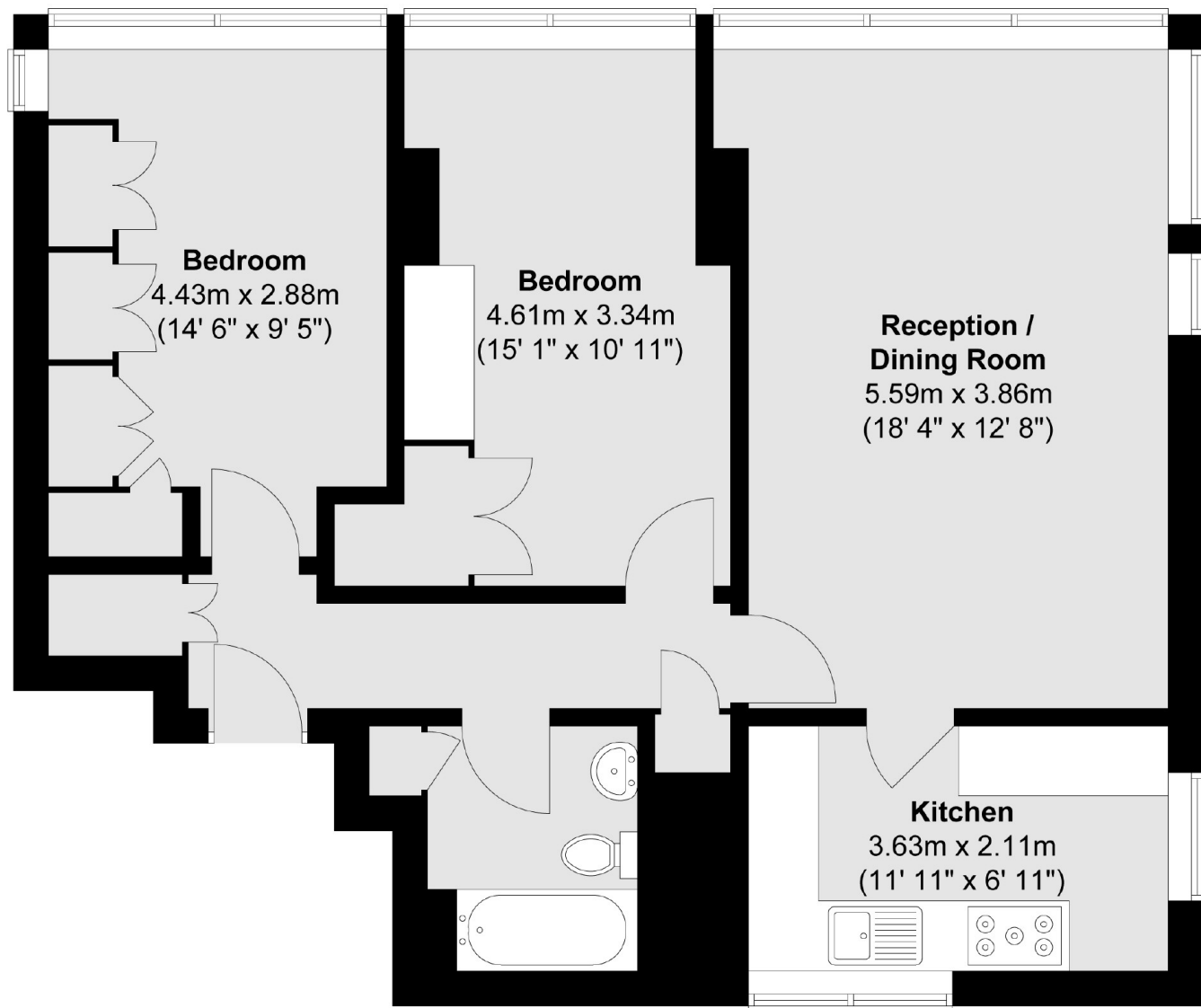
£425,000

Sitting four floors above the streets of Richmond, this spacious, corner unit, two bedroom flat enjoys some incredible views day and night. The flat is in good order throughout, with two double bedrooms and plenty of storage space. It also comes with parking within the development, large communal gardens and a share of freehold.

Lower Mortlake Road is conveniently located within easy reach of all the amenities of Central Richmond including restaurants, shops and both underground and overground rail links.

- Two Double Bedrooms • Fourth Floor • Great Views •
- Corner Unit • Share of Freehold • Parking •

## Fourth Floor



Total area (approx.) : 68.5 sq. m (737 sq. ft)

Snellers St. Margarets Sales  
36 Crown Road  
St Margarets  
TW1 3EH  
020 8892 8008  
[stmargaretssales@snellers.co.uk](mailto:stmargaretssales@snellers.co.uk)

Energy Rating: We aim to make our particulars both accurate and reliable. However they are not guaranteed; nor do they form part of an offer or contract. If you require clarification on any points then please contact us, especially if you're traveling some distance to view. Please note that appliances and heating systems have not been tested and therefore no warranties can be given as to their good working order