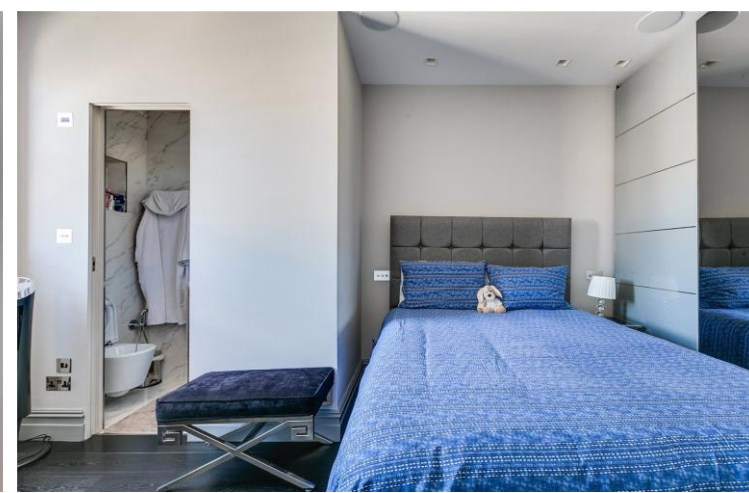




Chesham Place
London, SW1X

CHESTERTONS





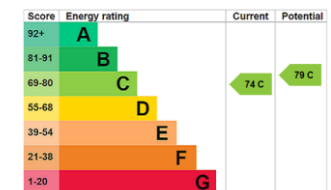
SHORT LET Newly renovated third floor apartment of circa 621 sq ft, comprising part of an impressive stucco fronted period conversion in the heart of Belgravia.

The property has been beautifully interior designed throughout and benefits from high quality wood flooring, modern fireplace, two double bedrooms, two bathrooms and a separate fully fitted kitchen.

- SHORT LET
- Stunning third floor apartment
- Wood flooring
- Two double bedrooms
- Two bathrooms
- Separate kitchen

£6,000 pcm

Additional tenant charges apply (fees apply to non-AST tenancies only)
 Tenancy Agreement Fee: £300
 References per Tenant/Guarantor: £60
 Inventory check (approx. £100 – £250 inc. VAT)
chestertons.co.uk/property-to-rent/applicable-fees



Minimum Term: 1 month
Deposit Required: 1 month
Local Authority: City of Westminster
Council Tax Band: G
EPC Rating: C
Furnished

Chestertons Knightsbridge & Belgravia Lettings

31 Lowndes Street
 London
 SW1X 9HX

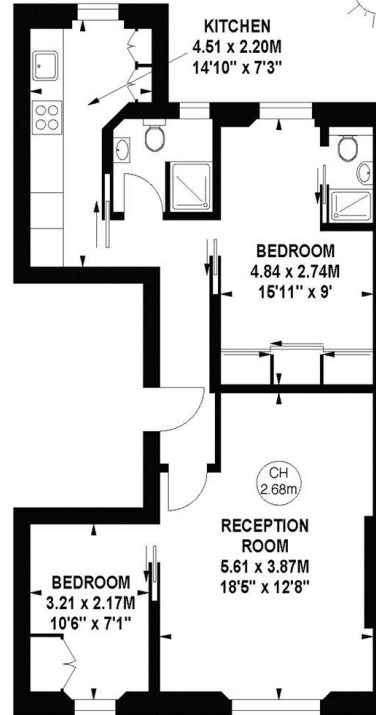
knightsbridgelettingsusers@chestertons.co.uk
 02072353530
chestertons.co.uk

Chesham Place, SW1X

Approximate gross internal area

57.69 sq m / 621 sq ft

Key :
CH - Ceiling Height



Third Floor

The floor plan is not to scale and measurements and areas shown are approximate and therefore should be used for illustrative purposes only. The plan has been prepared in accordance with the RICS code of Measuring Practice and whilst we have confidence in the information produced, it must not be relied on.

If there is any aspect of particular importance, you should carry out or commission your own inspection of the property.

Copyright of FeaturePRO.

