

STONE



*Lynwood Road RH1*

£700,000

*“At Stone, we’re passionate about the unique and awe-inspiring architectural elements that transform houses into dream homes.”*

————— *The Stone Family*



Tucked away on a peaceful cul-de-sac, this elegant Victorian semi-detached home delivers over 1,800 sq ft of versatile living space spread across four floors. Full of character and charm, the rendered façade and classic bay windows provide instant kerb appeal, setting the scene for the home's timeless style. Having been cherished by the same family for more than 30 years, it is now offered with no onward chain — a rare opportunity in such a sought-after position.

Step inside and you're greeted by high ceilings and a wonderful sense of scale. The ground floor flows beautifully, with two substantial reception rooms that balance entertaining space with everyday comfort. To the rear, the kitchen opens directly onto the garden, enjoying natural light and a practical layout, while the lower ground floor provides two generous storage rooms — ideal for utility use, hobbies, or even future conversion.

The first floor hosts three double bedrooms, including an impressive 17ft front room, alongside a family bathroom and separate WC. Rising to the top floor, a large loft bedroom with eaves storage offers flexibility as a fourth bedroom, home office, or studio. The proportions and layout make this a home ready to adapt to the needs of modern family life.

A recently installed boiler adds peace of mind, while outside there is permit parking and a nearby park perfect for relaxation and play. Redhill town centre and mainline station are just a short walk away, ensuring effortless connections into London.







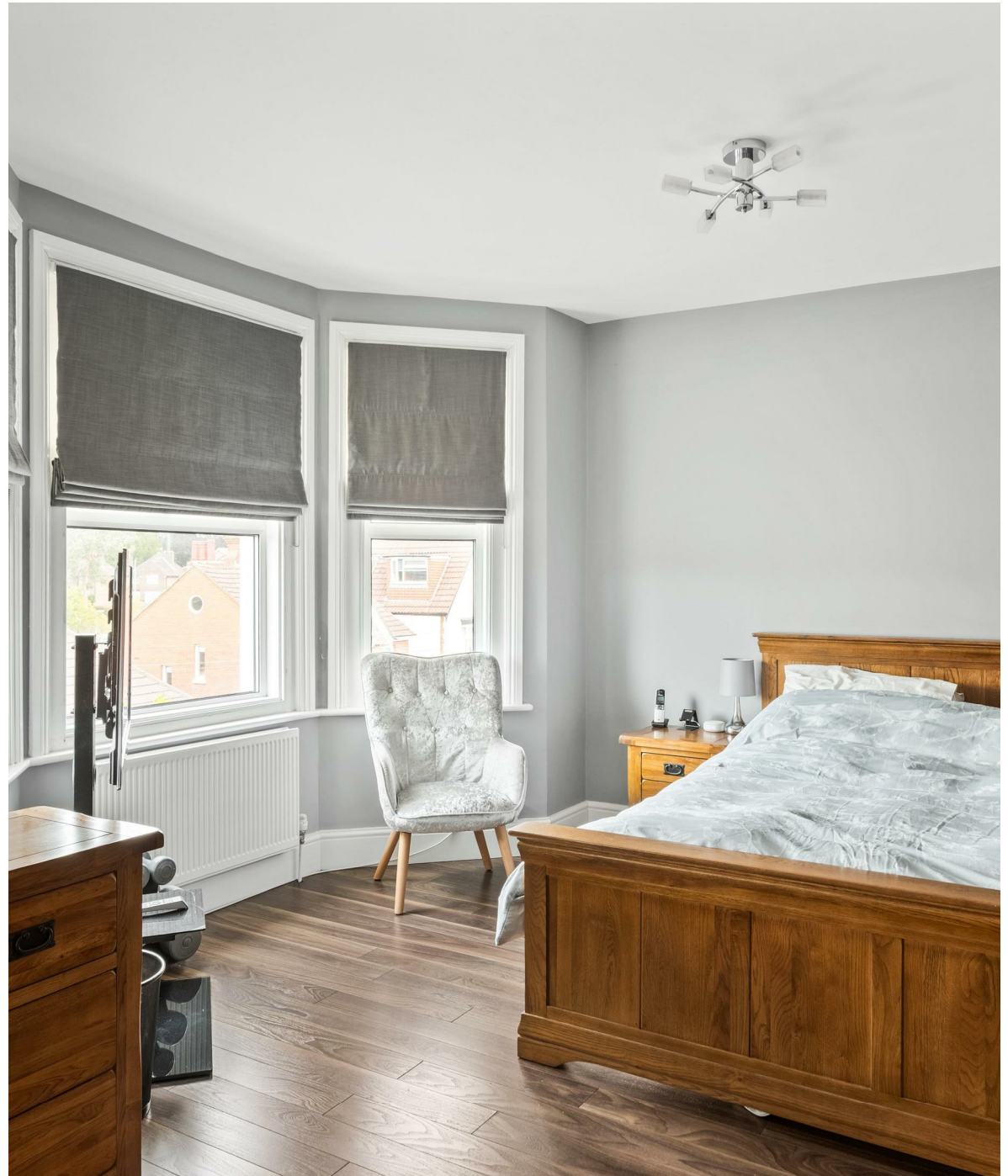


Lynwood Road is one of Redhill's hidden gems: a leafy, characterful no-through road lined with handsome period homes.

It's a peaceful street, protected by permit-only parking, yet incredibly well connected. Just a few minutes' walk brings you to Redhill station, offering fast, direct services to London Bridge, Victoria, and Gatwick. You're close enough to stroll into town for essentials or a morning coffee, but far enough removed to enjoy the calm that comes with being tucked away on such a quiet street.

Within walking distance, the much-loved Home Cottage pub offers the perfect local – think log fires in winter, and a walled garden alive with chatter in the summer. Redhill Memorial Park is also nearby, providing open green space for dog walks, picnics, or letting little ones run free. For further weekend outings, Reigate's historic high street is just a short drive or a scenic walk away.

Everything here works in harmony – a home rich in period detail and modern comfort, set in one of Redhill's most desirable, community-minded roads. For those seeking character, convenience, and calm in equal measure, life on Lynwood Road offers all that and more.









**Approx. Gross Internal Floor Area 1993 sq. ft / 185.12 sq. m**  
Illustration for identification purposes only, measurements are approximate, not to scale.  
Produced by Elements Property



## The Details

- Four spacious double bedrooms and including loft bedroom with eaves storage
- Over 1,800 sqft of versatile accommodation across four floors
- Elegant Victorian semi-detached with classic bay frontage
- Two generous reception rooms with high ceilings and period charm
- Kitchen with direct garden access, plus basement storage rooms
- Recently installed boiler, offered with no onward chain
- Peaceful cul-de-sac setting, moments from Redhill town and station

Size  
Approx 1993.00 sqft

Energy Performance Certificate (EPC)  
Rating D

Council Tax Band  
E



STONE

*Let's Talk*

01737 301 557

hello@stoneestateagents.co.uk

stoneestateagents.co.uk

The particulars above are a guide, not an offer or contract. Descriptions photographs and plans are not statements or representations of fact. Measurements are approximate and not to scale. Prospective purchasers must verify the accuracy of the information within the particulars. Stone does not give any representations or warranties; nor represent the Seller legally. Stone has no liability, for any costs, losses or expenses incurred by the Seller or a prospective buyer relating to the sales and buying transaction. Our Sales Disclaimer, trading names and privacy policy on how your data is processed and used is found in full on our website in our Privacy Statement.

© Stone Estate Agents 2023 All rights Reserved