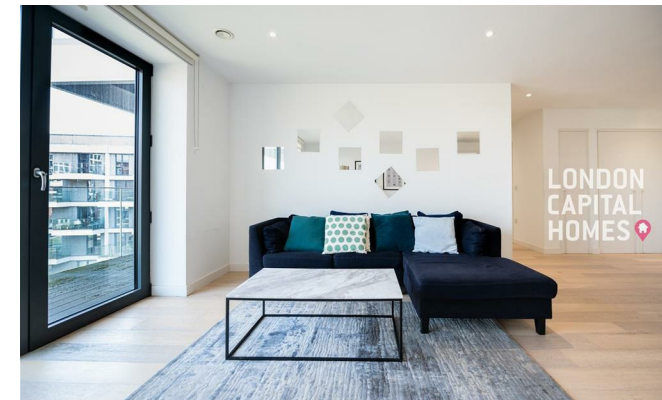


**LONDON  
VICTORIA  
GROUPS** 



## Fairwater House, 1 Bonnet Street

, London E16 2SY

- TWO-BEDROOM APARTMENT
  - Private Balcony
  - 24-Hour Concierge
- Close to Thames Clipper & DLR links (Pontoon Dock / Royal Wharf)
  - CTB-E
- Open-Plan Living and Dining Area
  - Underfloor Heating
- Gym, indoor pool, sauna & steam room
  - EPC-B

**£550,000 Leasehold**

Local Authority **Newham**  
Council Tax Band **E**  
EPC Rating **B**



**London Office Office**

Spaces Victoria, 25 Wilton Road, Pimlico,  
London, SW1V 1LW

**Contact**

020 3084 3094  
XL@londonvictoriagroups.co.uk  
www.londonvictoriagroups.co.uk

Agents Note: Whilst every care has been taken to prepare these particulars, they are for guidance purposes only. All measurements are approximate and for general guidance purposes only and whilst every care has been taken to ensure accuracy, they should not be relied upon and potential buyers/tenants are advised to recheck the measurements.

