

122 Chiltern Road, Dunstable, LU6 1ET
£375,000

ROBINSONS

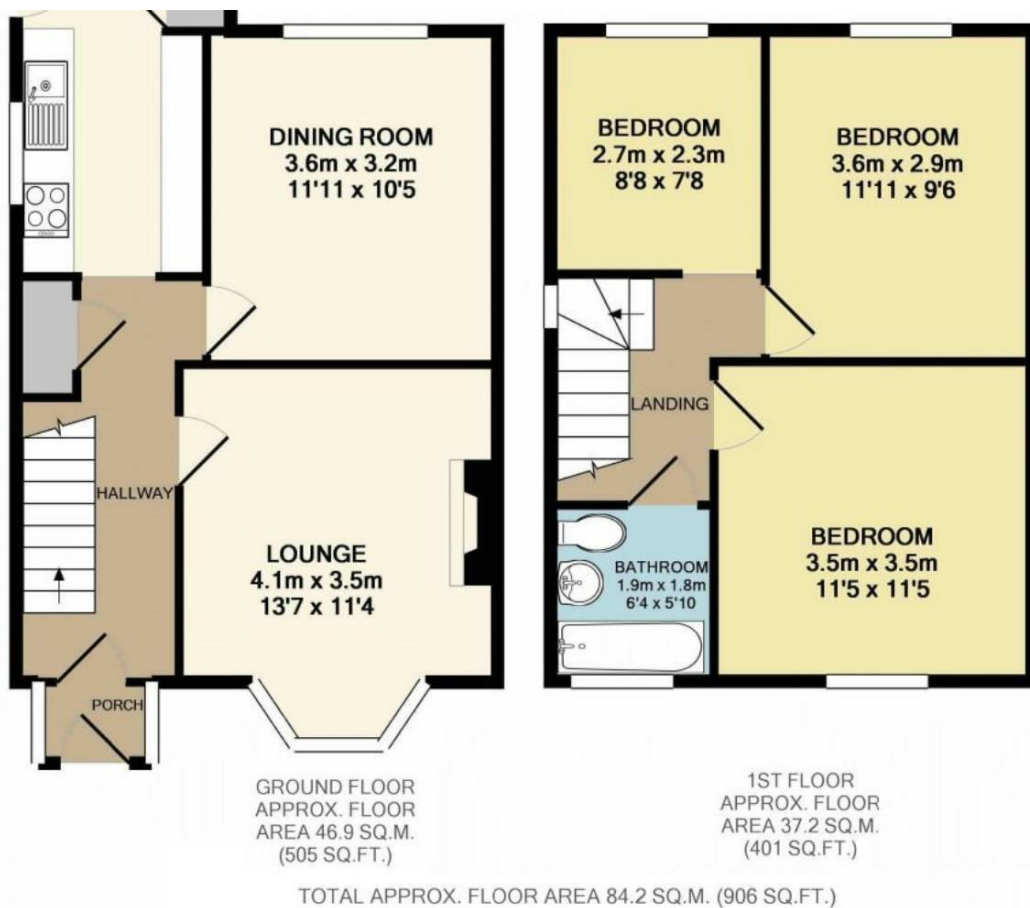


OFFERED WITH NO UPPER CHAIN WITH PROBATE ALREADY APPLIED FOR (01/04/2026) , THIS SPACIOUS THREE BEDROOM FAMILY HOME IS VERY WELL MAINTAINED AND IDEALLY LOCATED.

Upon entering, you are welcomed into a porch which leads through to the hallway, providing access to the main ground floor rooms. To the front of the property sits a bright and spacious lounge, enhanced by a bay window that allows plenty of natural light to flow in, creating a warm and inviting living space.

To the rear, the dining room offers a great setting for family meals and entertaining, with a pleasant outlook over the garden. The kitchen is positioned just off the dining area, providing a practical layout with access through to the immaculately kept rear garden and garage which is ideal for everyday use.

Upstairs, the landing leads to three well proportioned bedrooms. The main bedroom is a generous double, alongside a second double and a third bedroom that works perfectly as a child's room, guest space or home office. The family bathroom is centrally located and serves all bedrooms.



20 West Street
 Dunstable
 Bedfordshire
 LU6 1SX
 01582 661112
sales@robinsons-estates.co.uk
<https://www.robinsons-estates.co.uk>



Energy Efficiency Rating		Current	Potential
Very energy efficient - lower running costs			
(92 plus)	A		
(81-91)	B		
(69-80)	C		
(55-68)	D		
(39-54)	E		
(21-38)	F		
(1-20)	G		
Not energy efficient - higher running costs			
England & Wales		EU Directive 2002/91/EC	