



Burton Street, WC1H

£800,000

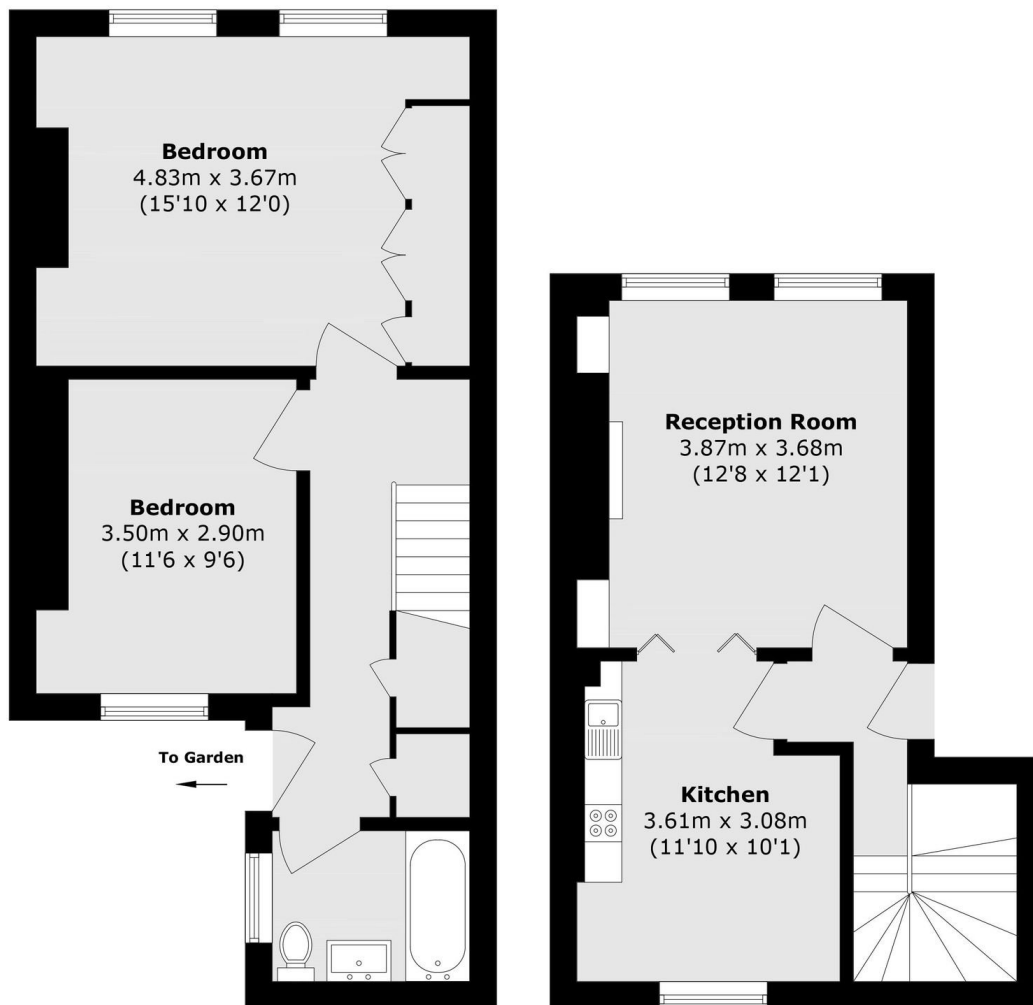
A beautifully presented, two double bedroom home set within the heart of Bloomsbury on a no through road. The property is set over two floors and includes a separate contemporary kitchen, a feature fireplace, sash windows and high ceilings.

Burton Street is a unique Georgian cul-de-sac close to Cartwright Gardens. Transport facilities are located at Russell Square and Euston. Shopping amenities are situated at The Brunswick Centre including a host of high street shops and restaurants.

Features

- Two Double Bedrooms
- Private Garden
- Excellent Condition
- No Through Road
- Period Features
- No Onward Chain

Burton Street, London, WC1H



Lower Ground Floor

Ground Floor

Total area (approx.): 73.0 sq. m (785.7 sq. ft)