



Lenside Drive, Bearsted, Maidstone, , ME15 8UE

Guide Price £350,000



****GUIDE PRICE £350,000 - £375,000**NO FORWARD CHAIN****This beautifully presented, recently fully refurbished 2/3 bedroom property is situated in the highly desirable location of Bearsted which enjoys a delightful position backing directly onto the picturesque River Len.

As you step through the hallway, you are welcomed by a spacious, well-appointed, contemporary kitchen, showcasing a stylish modern feel. The kitchen flows seamlessly into a cosy sitting room, creating a wonderful space for relaxation, providing access to the well-designed sun room. This light-filled space features French doors that open onto a charming decked area, ideal for entertaining and enjoying the sunshine on this tranquil riverside setting.

Upstairs, you'll find a generous principal bedroom, complemented by a thoughtfully converted dressing room that was formally the third bedroom, which could easily be reinstated if desired. Additionally there is a well-proportioned second bedroom and a modern family bathroom.

Externally, the property boasts a garage-en-bloc and a beautifully maintained south-facing garden with an expansive decked area, offering stunning views of the River Len, enhancing the charm of this lovely home. Tenure: Freehold. Council Tax Band: C. EPC rating: D.

*External photos have been digitally enhanced using AI



ACCOMMODATION

GROUND FLOOR:

Hall

Kitchen

Sitting Room

Sun Room

FIRST FLOOR:

Principle Bedroom

Bedroom 2

Bathroom

EXTERNALLY:

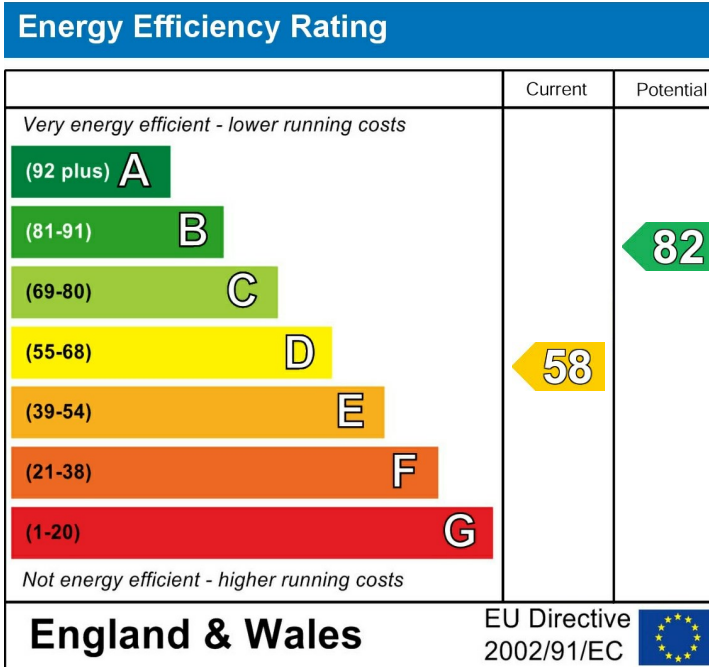
Driveway

Rear Garden

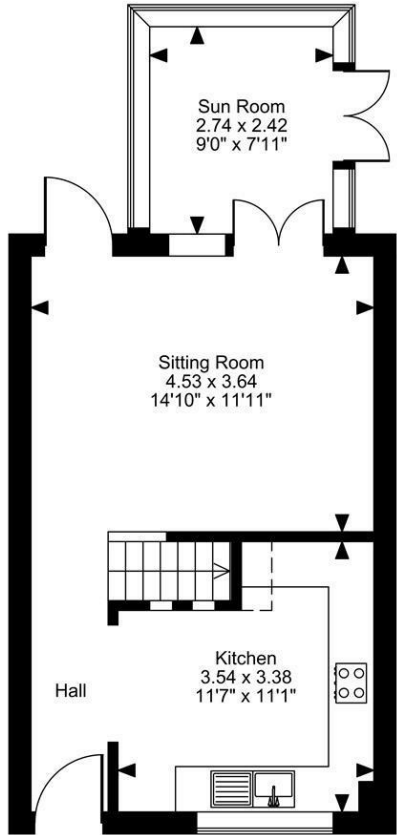
Garage

Viewing:

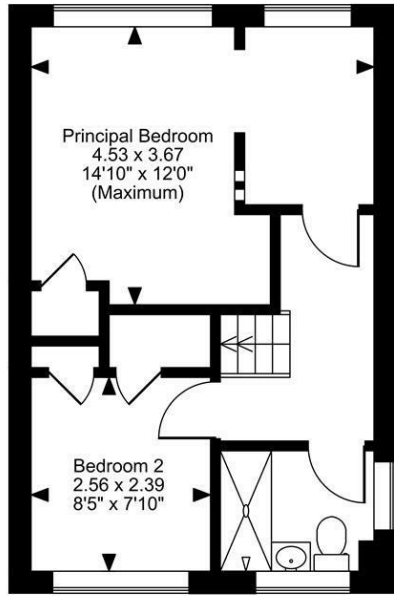
Strictly by arrangement with the Agent's Bearsted
Office: 132 Ashford Road, Bearsted, Maidstone, Kent
ME14 4LX. Tel: 01622 739574.



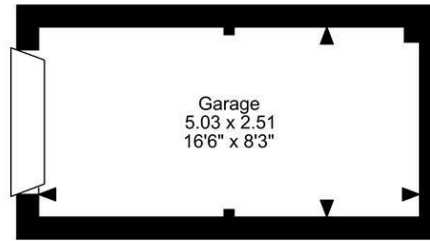
Page & Wells limited for themselves and for the vendors of this property whose agents they are give notice that: 1. These particulars do not constitute any part of, an offer or a contract. 2. All statements contained in these particulars as to this property are made without responsibility on the part of Page & Wells Limited or the Vendor. 3. None of the statements contained in these particulars as to the property is to be relied on as statements or representations of fact. 4. Any intending purchaser must satisfy himself by inspection or otherwise as to the correctness of each of the statements contained in these particulars. 5. The vendor does not make or give, and neither Page & Wells Limited nor any person in their employment has any authority to make or give any representation whatsoever in relation to this property. These particulars are supplied on the understanding that all negotiations are carried out throughout Page & Wells Limited. Properties with a reference prefixes EAA are those which Page & Wells Limited disclose an interest in accordance with the provisions of the Estates Agents Act 1979



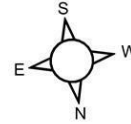
Ground Floor



First Floor



Bearsted, Maidstone, Kent
Approximate Gross Internal Area
Main House = 776 Sq Ft/72 Sq M
Garage = 136 Sq Ft/13 Sq M
Total = 912 Sq Ft/85 Sq M



FOR ILLUSTRATIVE PURPOSES ONLY - NOT TO SCALE

The position & size of doors, windows, appliances and other features are approximate only.

□ □ □ □ Denotes restricted head height

© ehouse. Unauthorised reproduction prohibited. Drawing ref. dig/8679415/SAP

