



## 5 Willow House Carter Court, Hook – RG27 9AD

£270,000 Leasehold

UPPER GROUND FLOOR • TWO DOUBLE BEDROOMS • ENSUITE AND FAMILY BATHROOM • ALLOCATED PARKING • LOCKABLE BIKE SHEDS • COUNCIL TAX BAND C • EPC B • LEASE TERM 116 YEARS • SERVICE CHARGE APPROX. £1,400 P/A • GROUND RENT APPROX. £250 P/A

01256 321777

[www.thepropertyexplorer.co.uk](http://www.thepropertyexplorer.co.uk)

the property  
**explorer**

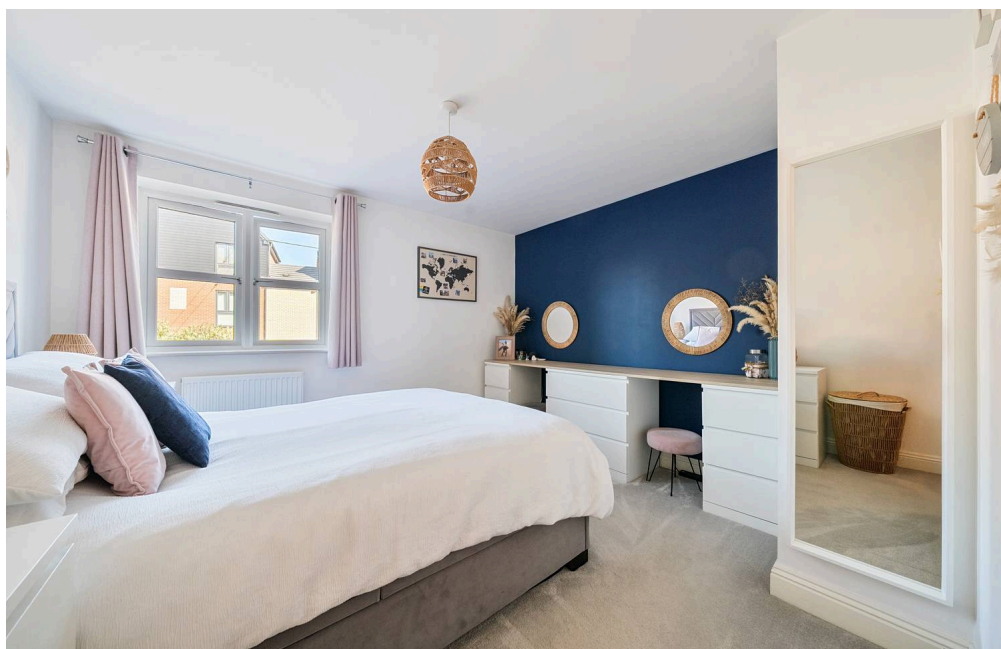
**EXPLORER** – This impressive two-bedroom apartment offers a bright and spacious living environment, with beautifully maintained accommodation finished to a high specification throughout.

Council Tax band: C

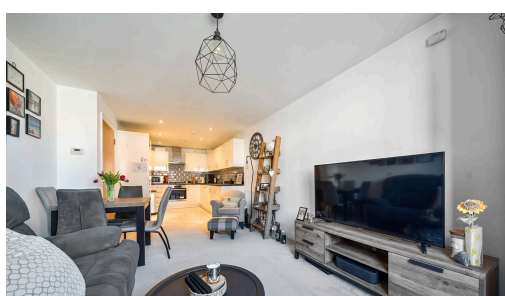
Tenure: Leasehold

EPC Energy Efficiency Rating: B

EPC Environmental Impact Rating: B



- › UPPER GROUND FLOOR
- › TWO DOUBLE BEDROOMS
- › ENSUITE AND FAMILY BATHROOM
- › ALLOCATED PARKING
- › LOCKABLE BIKE SHEDS
- › COUNCIL TAX BAND C
- › EPC B
- › LEASE TERM 116 YEARS
- › SERVICE CHARGE APPROX. £1,400 P/A
- › GROUND RENT APPROX. £250 P/A

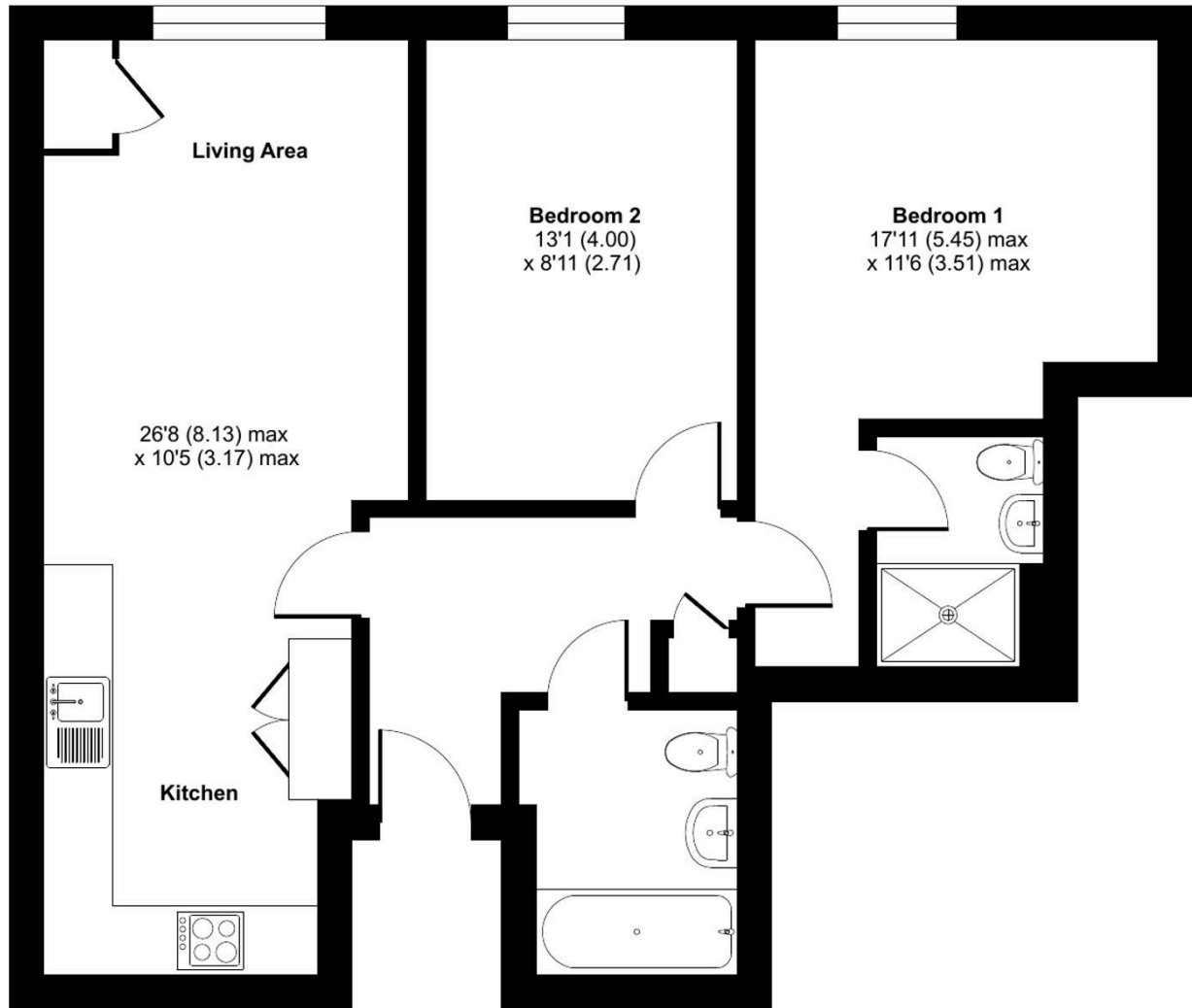




# Willow House, Carter Court, Hook, RG27

Approximate Area = 684 sq ft / 63.5 sq m

For identification only - Not to scale



**GROUND FLOOR**

 Floor plan produced in accordance with RICS Property Measurement 2nd Edition, Incorporating International Property Measurement Standards (IPMS2 Residential). © nchecom 2026. Produced for Property Explorer. REF: 1440143

You can include any text here. The text can be modified upon generating your brochure.