



## Sonael Bungalow Ebbw

£250,000

- council tax band D
- Detached Bungalow
- Three/Four Bedrooms
- Off Road Parking
- No Onward Chain
- Great Location
- EPC Rating: E



 5
  2
  2





## About the property

Welcome to Ebbw View, a delightful detached bungalow nestled in the heart of Beaufort. This exceptional property is set over two floors and offer a fantastic opportunity for those seeking a spacious and comfortable home in a prime location.

Ebbw View features five generously sized bedrooms, providing ample space for a growing family or the flexibility to create a home office, gym, or guest room as needed. The interior is designed with comfort and practicality in mind, ensuring a welcoming atmosphere from the moment you step inside.

One of the standout features of this property is the off-road parking, ensuring convenience and peace of mind for homeowners and visitors alike. The tiered rear garden is a true highlight, offering a beautifully landscaped outdoor space perfect for relaxation, gardening, or entertaining. The various levels provide distinct areas for different activities, making it a versatile and enjoyable space throughout the year.

Located in a highly sought-after area, Ebbw View is ideally positioned to take advantage of the local amenities and natural beauty that Beaufort has to offer. Whether you're exploring the nearby countryside, enjoying the vibrant community, or simply relaxing in your own private haven, this property offers the best





## Accommodation

### Entrance Hall

### Living Room

17' 2" x 16' 8" ( 5.23m x 5.08m )

### Bedroom

11' x 13' 7" ( 3.35m x 4.14m )

### Bedroom

11' 9" x 11' to wardrobe ( 3.58m x 3.35m to  
wardrobe )

### Bedroom

11' 7" x 11' 9" ( 3.53m x 3.58m )

### Wet Room

5' 4" x 8' 4" ( 1.63m x 2.54m )

### Bedroom

11' 6" x 15' 7" ( 3.51m x 4.75m )

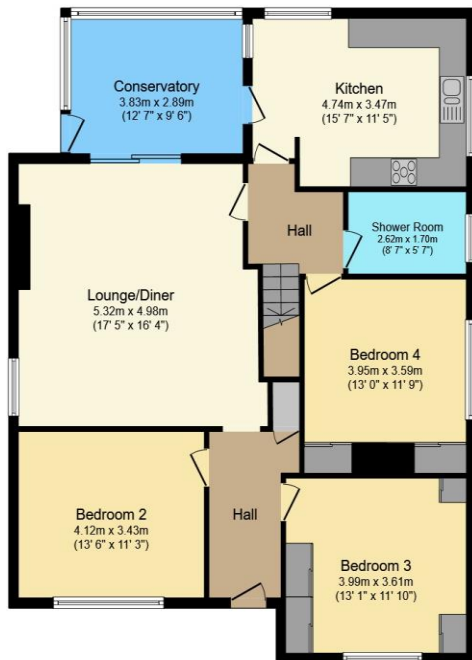
### Bedroom

12' 3" x 9' 8" ( 3.73m x 2.95m )

01495360922

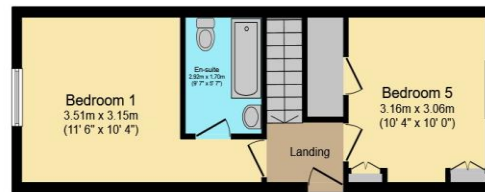
ebbwvale@peteralan.co.uk

## Floorplan



Ground Floor

Floor area 119.5 m<sup>2</sup> (1,287 sq.ft.)



First Floor

Floor area 35.1 m<sup>2</sup> (378 sq.ft.)

TOTAL: 154.6 m<sup>2</sup> (1,664 sq.ft.)

This floor plan is for illustrative purposes only. It is not drawn to scale. Any measurements, floor areas (including any total floor area), openings and orientations are approximate. No details are guaranteed, they cannot be relied upon for any purpose and do not form any part of any agreement. No liability is taken for any error, omission or misstatement. A party must rely upon its own inspection(s). Powered by [www.Propertybox.io](http://www.Propertybox.io)

## Important Information

Note while we endeavour to make our sales details accurate and reliable, if there is any point which is of particular interest to you, please contact the office and we will be pleased to confirm the position for you. We have not personally tested any apparatus, equipment, fixtures, fittings or services and cannot verify they are in working order or fit for their purposes. Nothing in these particulars is intended to indicate that carpets or curtains, furnishings or fittings, electrical goods (whether wired or not). Gas fires or light fittings or any other fixtures not expressly included form part of the property offered for sale. This computer generated Floorplan, if applicable, is intended as a general guide to the layout and design of the property. It is not to scale and should not be relied upon for dimensions. Tenure: We cannot confirm the tenure of the property as we have not had access to the legal documents. The buyer is advised to obtain verification from their solicitor or surveyor.

Peter Alan Limited is registered in England and Wales under company number 2073153, Registered Office is Cumbria House, 16-20 Hockliffe Street, Leighton Buzzard, Bedfordshire, LU7 1GN. VAT Registration Number is 500 2481 05. For activities relating to regulated mortgages and non-investment insurance contracts, Peter Alan Limited is an appointed representative of Connells Limited which is authorised and regulated by the Financial Conduct Authority. Connells Limited's Financial Services Register number is 302221. Most buy-to-let

**pa** peter  
alan