

Kemerton Road | London | SE5

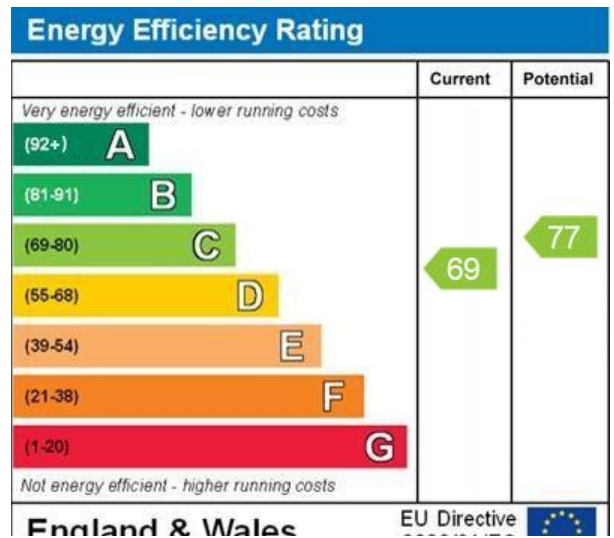
Leasehold

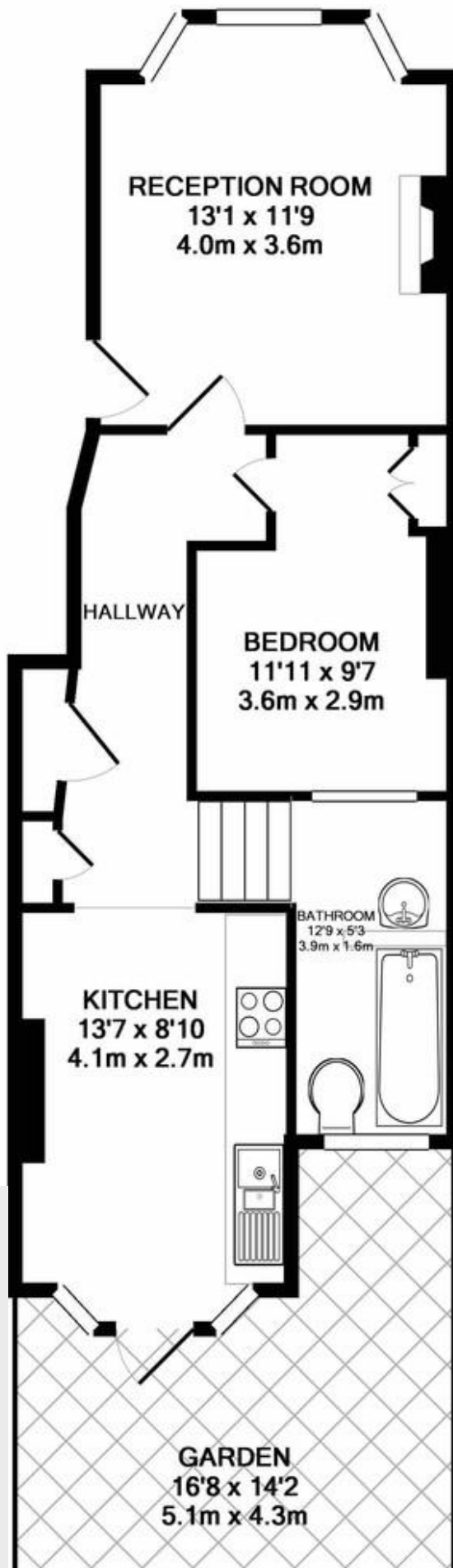
£450,000

- Victorian apartment
- Ground floor
- Garden
- Well presented
- Period features
- One double bedroom
- Great location
- Good storage
- Ruskin Park
- Denmark Hill & Lb Junction



Pretty ground floor garden flat, with a very long lease. Located on a popular residential road, close to Ruskin Park and the excellent transport links at Loughborough Junction and Denmark Hill. Brixton tube, POP and Market within walking distance. There is a reception room with fireplace and bay window, plantation shutters, double bedroom, bathroom and nicely designed kitchen leading out to a private garden. Other attractions; local gym, summer bandstand concerts, fetes, local eateries and coffee shops. Fast trains to City and West End. Kings college hospital.





## Viewing Arrangements

Strictly by appointment

## Contact Details

121 Denmark Hill

London

SE5 8EN

[www.urbanvillagehomes.co.uk](http://www.urbanvillagehomes.co.uk)

[sales@urbanvillagehomes.com](mailto:sales@urbanvillagehomes.com)

020 3519 9121

Agents Note: Whilst every care has been taken to prepare these sales particulars, they are for guidance purposes only. All measurements are approximate and for general guidance purposes only and whilst every care has been taken to ensure their accuracy, they should not be relied upon and potential buyers are advised to recheck the measurements.