

Healum Avenue Southall

This bright and spacious one bedroom apartment is available to rent in the heart of Southall. The apartment comprises of a stunning open plan kitchen and living space.

Residents can enjoy the stunning landscaped courtyard, shops and restaurants that this vibrant neighbourhood has to offer.

Located close to Southall Tube & Rail Station, this well appointed property affords easy access to Central London, less than half an hour to Paddington and Heathrow Airport.

Minimum contract: 12 months

£410 Per Week

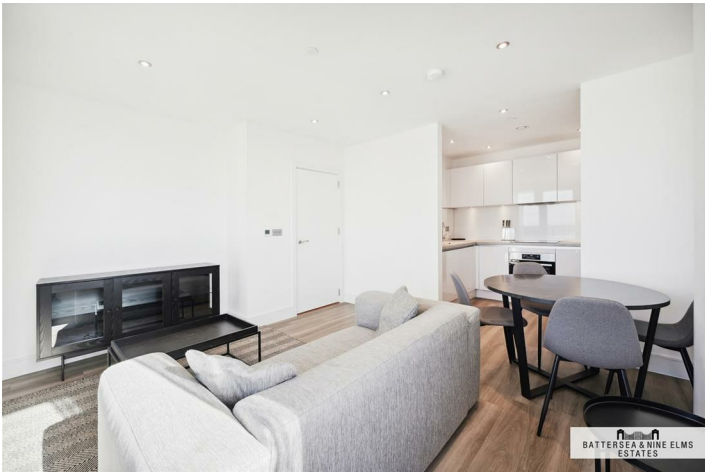
Healum Avenue Southall



- One bedroom
- Communal garden
- Furnished
- Landscaped courtyard
- Excellent transport links
- Excellent location



[Directions](#)



Floor Plan

These particulars, whilst believed to be accurate are set out as a general outline only for guidance and do not constitute any part of an offer or contract. Intending purchasers should not rely on them as statements of representation of fact, but must satisfy themselves by inspection or otherwise as to their accuracy. No person in this firm's employment has the authority to make or give any representation or warranty in respect of the property.

