



**CARVERS**  
SALES & LETTINGS

Pierremont Gardens  
Darlington, DL3 9PE  
Offers over £450,000

House - Detached



'The Manse' Pierremont Gardens is situated in the prime of West End Darlington. This stunning detached period home offers a perfect blend of character and modern living. The property has been thoughtfully transformed by its current owners, ensuring that every detail contributes to a visually captivating, superb family home.

As you enter, a gracious hall greets you-an inviting welcome to the rest of this fine property. The ground floor boasts two fabulous, large reception rooms, ideal for both entertaining and relaxing. The bespoke kitchen is a true highlight, featuring a central island, integrated appliances and elegant granite work surfaces. Additionally, a practical utility room and a versatile bedroom or home office complete the ground floor layout.

To the first floor, you will find four generously sized bedrooms, each offering ample space and comfort. The stunning bathroom, adds a touch of luxury to this exquisite home.

Outside, the property benefits from corner-sited, south-west facing gardens, perfect for enjoying the sunshine. A good size double driveway provides convenient parking for two vehicles.

Internal viewing is highly recommended to fully appreciate the charm and character that this fine home has to offer. Whether you are seeking a family home or a tranquil retreat, this property is sure to impress.



- Stunning 4/5 bedroomed detached property
- Highly regarded West End location, walking distance to schools
- Useful ground floor cloaks/wc & utility room
- Corner sited south/west facing gardens
- Presented to a high standard throughout
- Fabulous bespoke kitchen/diner with centre island
- Retaining charm and character throughout
- Double width driveway

#### GENERAL INFORMATION:

Tenure: Freehold

Services: gas central heating, mains electric, water and drainage.

Double glazing

Local Authority: Darlington Borough Council (Tax Banding E)

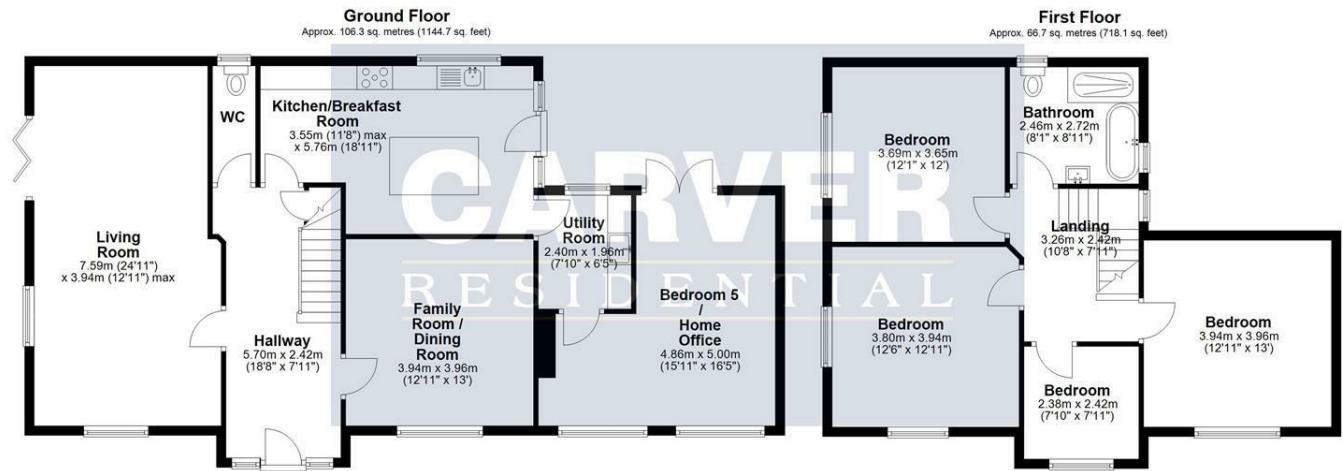
#### Buyers Identification Checks

Should a purchaser(s) have an offer accepted on a property marketed by Carver Residential they will need to undertake an identification check. This is done to meet our obligation under Anti Money Laundering Regulations (AML) and is a legal requirement. We use a specialist third party service to verify your identity, this is not a credit check and will have no effect on credit history. The cost of these checks is £36 inc. VAT per buyer, which is paid in advance, when an offer is agreed and prior to a sales memorandum being issued. This charge is non-refundable.

#### Property Size

Please note the property size is taken from the Energy Performance Certificate and may not take into account all rooms from the floorplan (due to unheated space not being calculated e.g. this may potentially exclude a conservatory)





Total area: approx. 173.1 sq. metres (1862.8 sq. feet)  
30 Pierremont Gardens, Darlington

Energy Efficiency Rating		
	Current	Potential
Very energy efficient - lower running costs		
(92 plus) <b>A</b>		<b>82</b>
(81-91) <b>B</b>		
(69-80) <b>C</b>		
(55-68) <b>D</b>		
(39-54) <b>E</b>		
(21-38) <b>F</b>		
(1-20) <b>G</b>		
Not energy efficient - higher running costs		
<b>England &amp; Wales</b>		EU Directive 2002/91/EC

Property size taken from EPC  
1776.00 sq ft

**Searching 1,000s of mortgages**  
Access to 12,000+ products from 90+ lenders across the UK.

Call: 01325 370341 Visit: Any of our offices  
Web: [mortgageadvicebureau.com/carvers](http://mortgageadvicebureau.com/carvers)

**Mortgage Advice Bureau**

Your home may be repossessed if you do not keep up repayments on your mortgage.  
There may be a fee for mortgage advice. The actual amount you pay will depend upon your circumstances.  
The fee is up to 1% but a typical fee is 0.3% of the amount borrowed.

The Property Ombudsman | RICS | naea propertymark PROTECTED | arla propertymark PROTECTED | Ethical Agent Network

These particulars do not constitute any part of an offer or contract. None of the statements contained in these particulars are to be relied on as statements or representations of fact and any intending purchaser must satisfy themselves by inspection or otherwise to the correctness of each of the statements contained in these particulars. The vendor does not make or give, and neither Carvers nor any person in their employment has any authority to make or give any representation or warranty whatever in relation to this property.