

SNELLERS

ESTATE AGENTS



Third Cross Road, TW2

£310,000

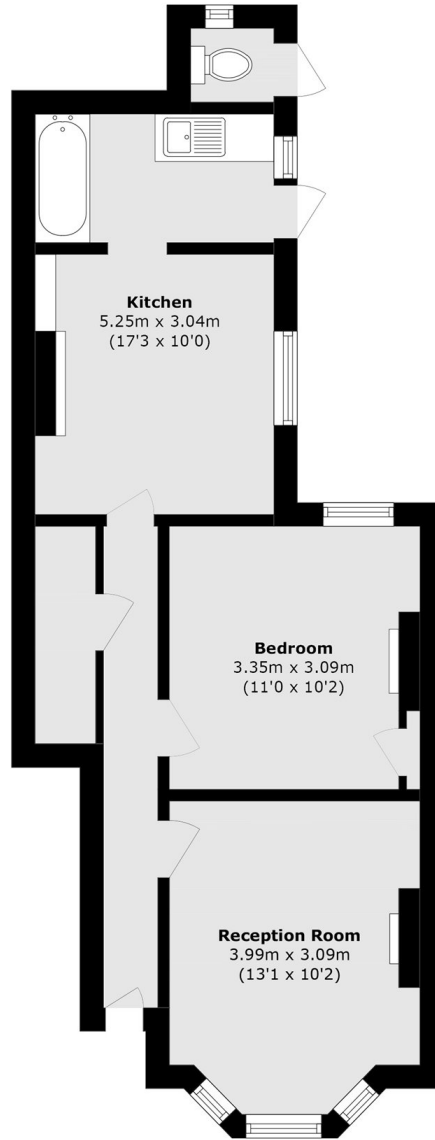
A superb investment opportunity to purchase this one double bedroom Victorian maisonette, ideally situated on a highly sought after road in Twickenham. The property requires full modernisation throughout and further benefits from a private west facing garden.

Third Cross Road is a quiet street just 0.4 miles from Twickenham Green and 0.6 miles from Strawberry Hill Station which has direct trains to London Waterloo. Twickenham Station is just over a mile away along with the high street for plenty of pubs, restaurants and shops to enjoy.

- Ground Floor • One Double Bedroom • Purpose Built •
- Close to Amenities • Fantastic Potential • No Onward Chain •

SNELLERS

ESTATE AGENTS



Total area (approx.): 46.4 sq. m (499.4 sq. ft)
(Excluding External Toilet)
External Toilet area (approx.): 1.2 sq. m (12.9 sq. ft)

Snellers Twickenham Sales
64-66 Heath Road
Twickenham
TW1 4BX
020 8892 5555
twickenhamsales@snellers.co.uk

Energy Rating: F We aim to make our particulars both accurate and reliable. However they are not guaranteed; nor do they form part of an offer or contract. If you require clarification on any points then please contact us, especially if you're traveling some distance to view. Please note that appliances and heating systems have not been tested and therefore no warranties can be given as to their good working order