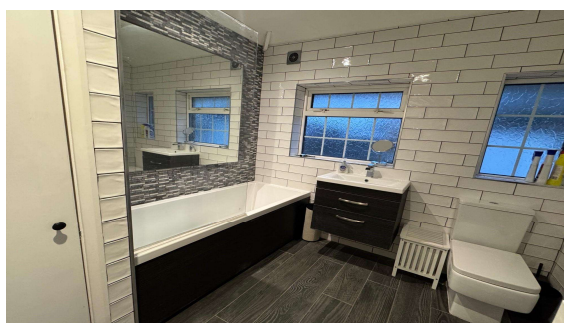
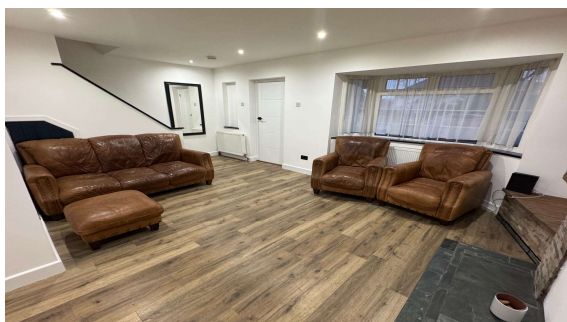




Stephen Close, Egham, Surrey, TW20 8DR

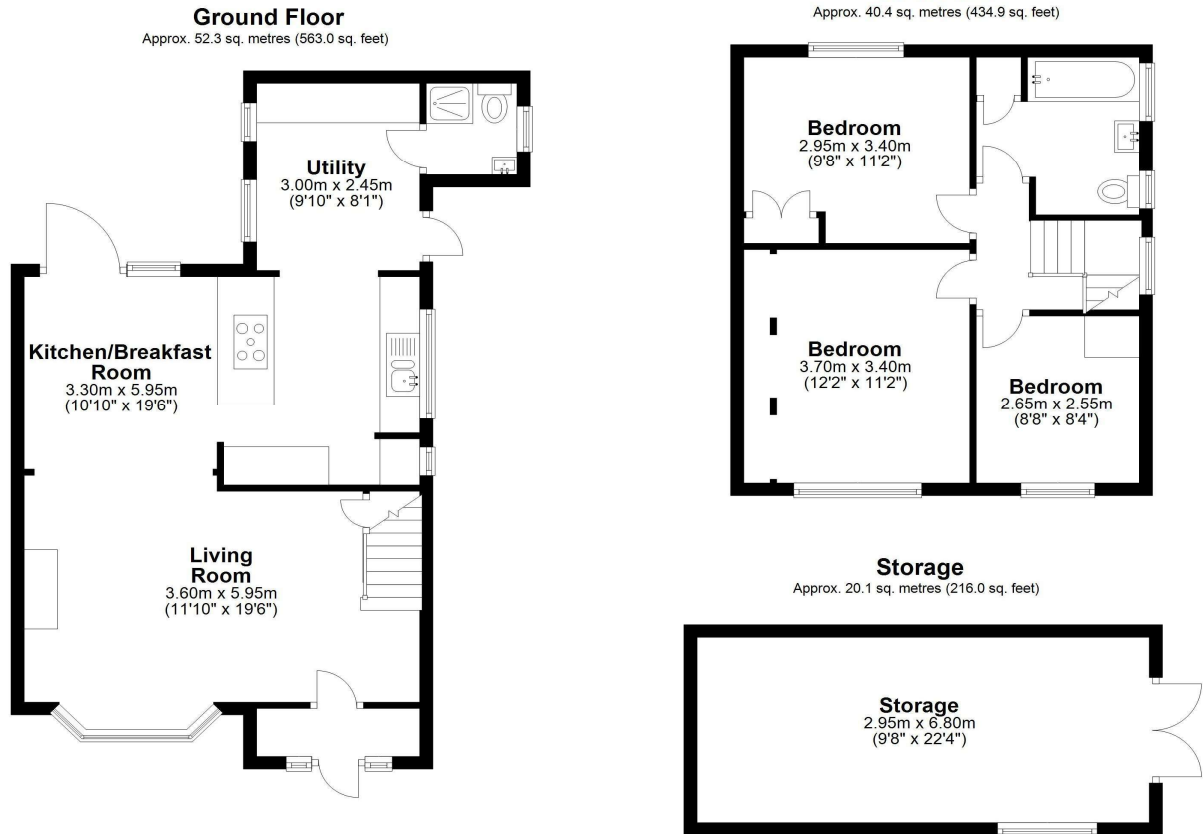
£525,000 F/H



Located close to local shops, schools and park, a superbly presented three bedroom family home with ample parking to front. Benefits include modern fitted kitchen, open plan lounge/diner, utility room, downstairs shower room and first floor bathroom. Access to Egham town centre and mainline station is a 20 minute walk away and the M25/Heathrow Airport are a few minutes' drive away. No onward chain.

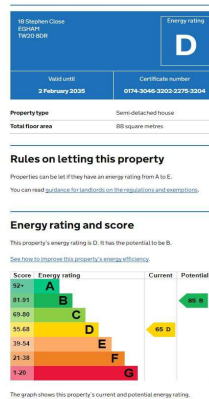
Stephen Close, Egham, Surrey, TW20 8DR

FLOOR PLAN



Total area: approx. 112.8 sq. metres (1213.9 sq. feet)

EPC



REAR GARDEN:

Approx 50ft (15.24m) with brick storage

DRIVEWAY:

Parking to front for four vehicles

COUNCIL TAX BAND:

C - Runnymede Borough Council

VIEWINGS:

By appointment with the clients selling agents,
Nevin & Wells Residential on 01784 437 437 or visit
www.nevinandwells.co.uk



All measurements are approximate. Nevin & Wells Residential have not tested any systems or appliances.