



Indescon Square, E14

£270,000

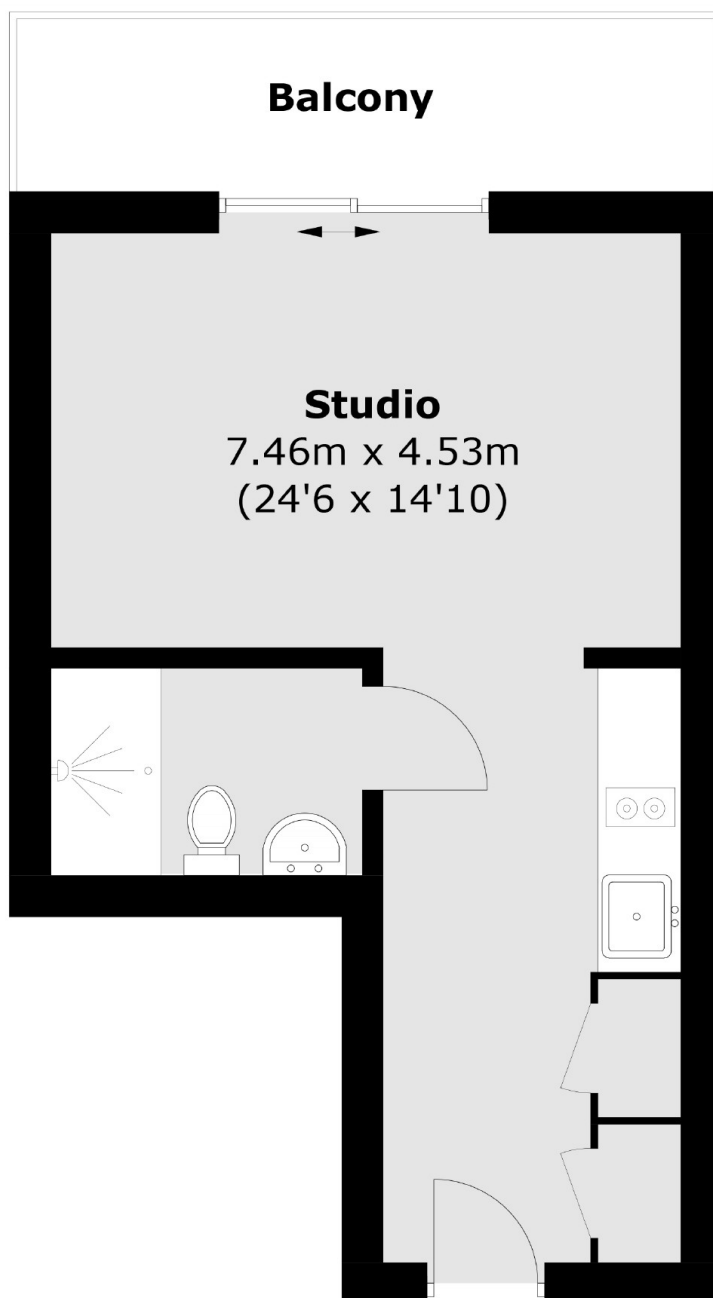
A bright studio apartment on the fourth floor within the sought after Indescon Square. The property includes wooden flooring, a separate sleeping area, private balcony and concierge service.

Indescon Square is in the heart of South Quay, moments from Millharbour Dock and a selection of shops, bars and restaurants in Canary Wharf. The Jubilee Line and Cross Rail are also accessible within Canary Wharf which both provide good links to the City.

Features

- Wooden Flooring
- Fourth Floor
- Private Balcony
- Concierge Service
- Communal Gardens
- No Onward Chain

Indescon Square, London, E14



Fourth Floor

Total area (approx.): 27.6 sq. m (297.0 sq. ft)
Balcony: 6.3 sq. m (67.8 sq. ft)