



Bywater Street, SW3

£3,350,000

Dexters



Bywater Street, SW3

A magnificent house moments from the King's Road, Pavilion Road and Duke of York Square. This property has been beautifully kept by the current owners and boasts three double bedrooms, large entertaining spaces and a private terrace.

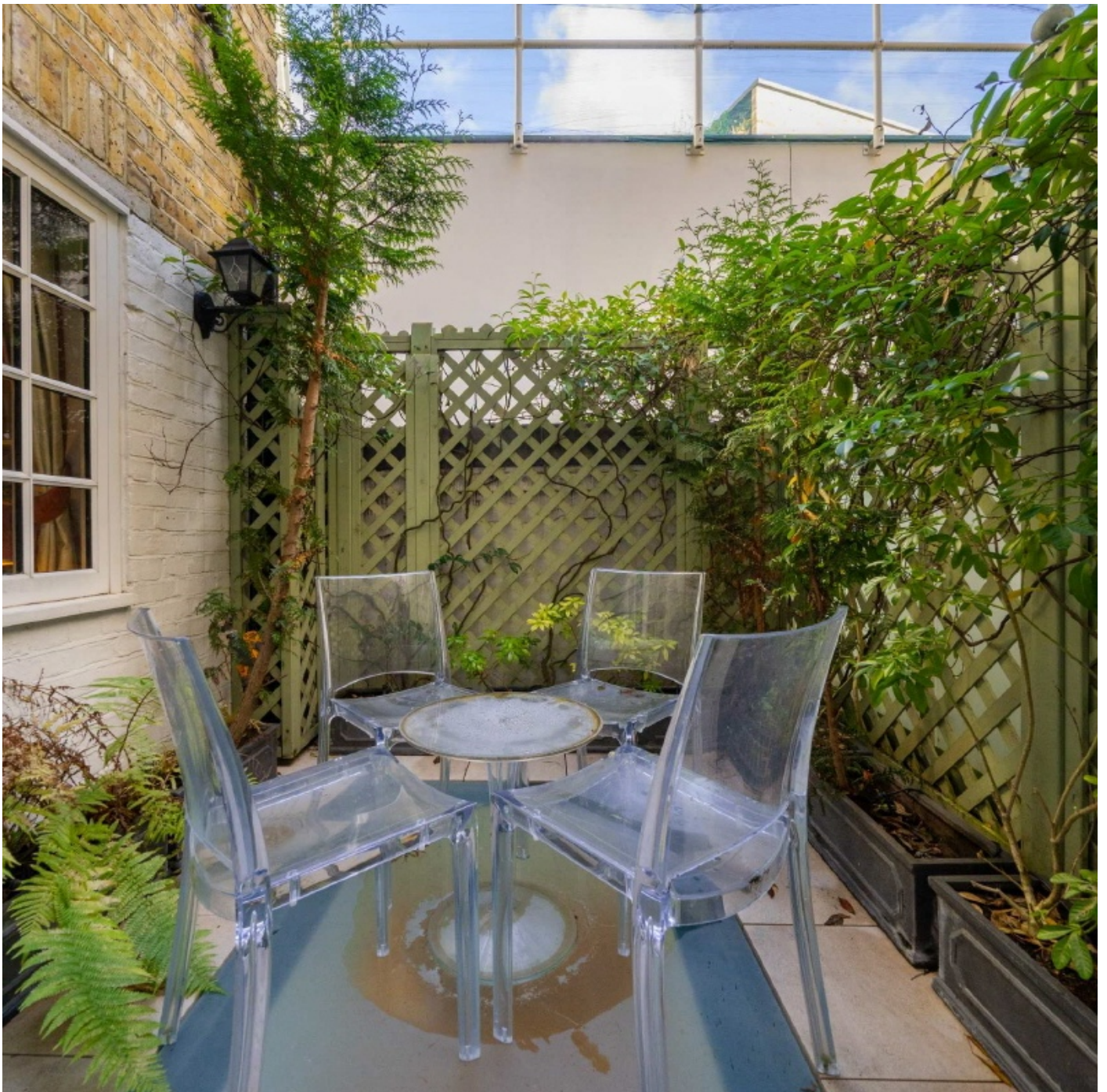
A generous reception room with plenty of character and access to a private terrace as well as a study is positioned on the raised ground floor as you enter the house. The lower ground floor of the house is ideal for entertaining as it boasts a beautiful dining room room, a modern kitchen and separate snug area.

The first floor has two double bedrooms with plenty of built-in storage and one bathroom. Located at the top of the house is a magnificent principal bedroom with vaulted ceilings and its own balcony.

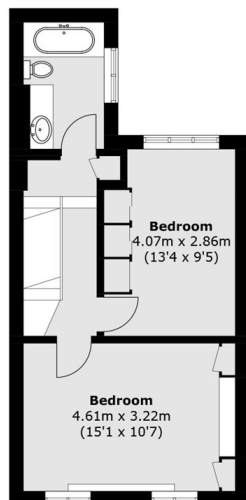
Bywater Street is a picturesque cul-de-sac in Chelsea, renowned for its charming pastel-coloured Georgian and Victorian terraced houses.

Features

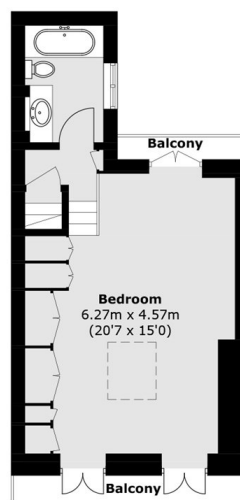
- Three Double Bedrooms
- Private Terrace
- Freehold
- Popular Location
- Large Entertaining Spaces
- Balcony



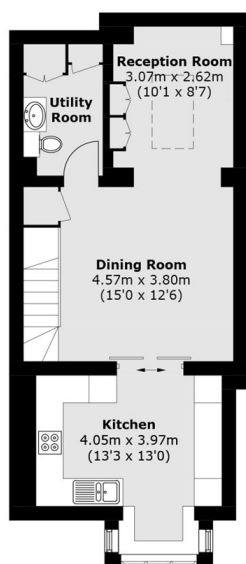
Bywater Street, London, SW3



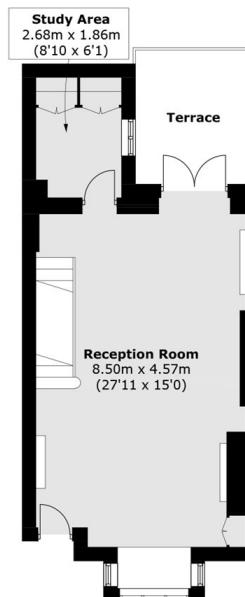
First Floor



Second Floor



Lower Ground Floor



Ground Floor

Total area (approx.): 159.9 sq. m (1,721.2 sq. ft)