



Flat 34 Stumperlowe Mansions Stumperlowe Lane, Fulwood, Sheffield,

Saxton Mee

# Flat 34 Stumperlowe Fulwood

Guide Price

## £130,000

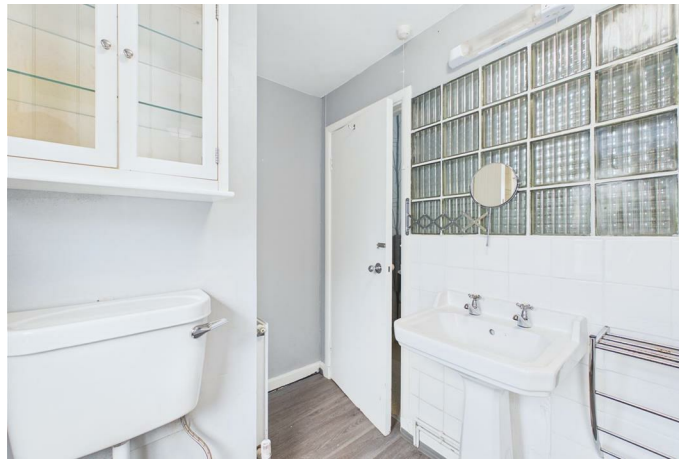
GUIDE PRICE £130,000 to £135,000

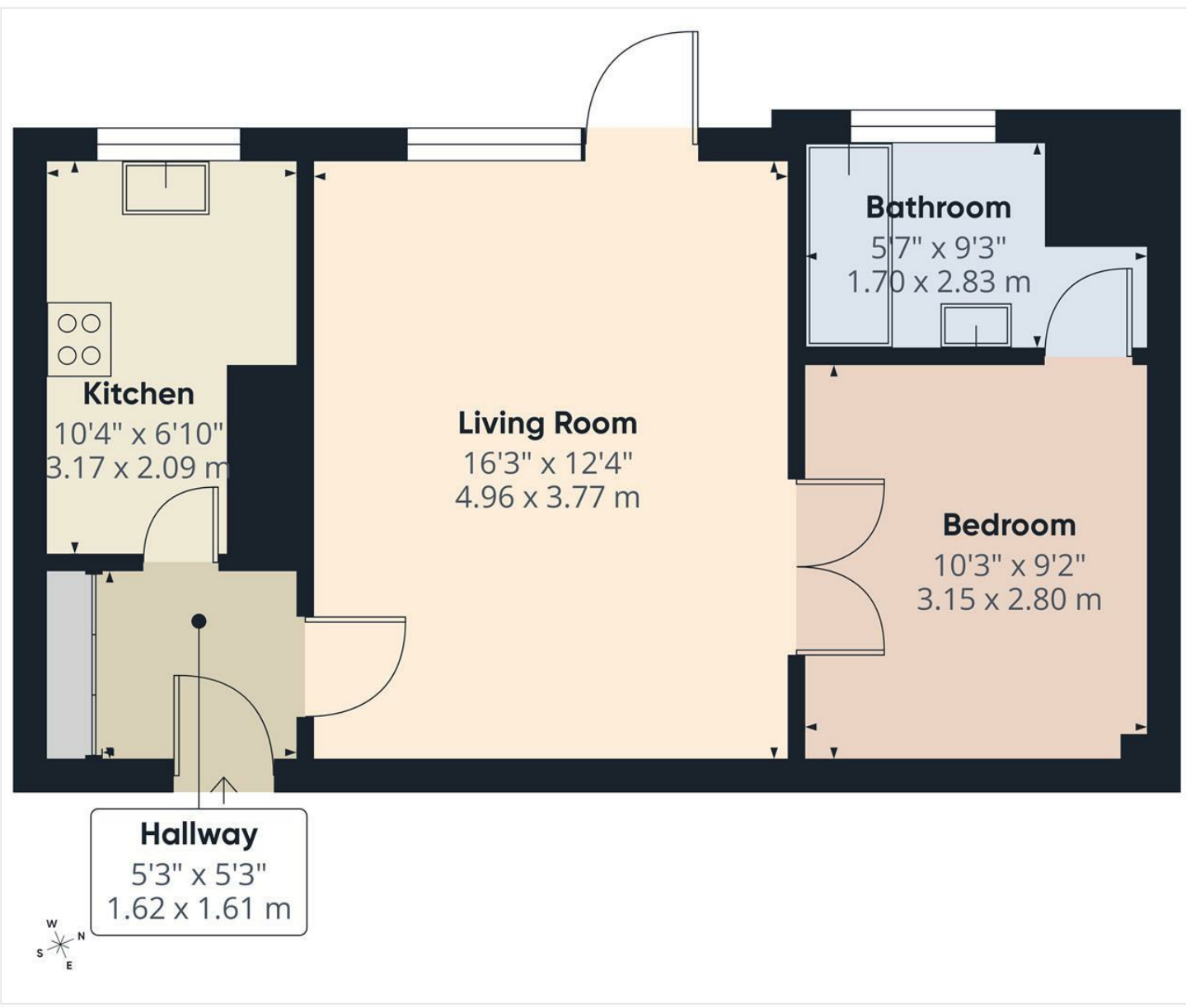
Located in unquestionably one of Sheffield's most prestigious and sought after residential suburbs is this well presented one bedroom 2nd floor apartment. Situated close to universities, hospitals and local amenities. The accommodation comprises: modern fitted kitchen with a range of appliances, good sized lounge with balcony overlooking the grounds, double bedroom with en suite bathroom having white 3 piece suite and shower over bath. The property benefits from having off road parking, gas central heating, attractive communal gardens, and neutral decoration.



- Set within one of Sheffield's most desirable and highly regarded residential areas
- A well-maintained one-bedroom apartment positioned on the second floor
- Conveniently located near universities, hospitals, and everyday local facilities
- Features a contemporary kitchen equipped with a selection of appliances
- Spacious living area with access to a balcony overlooking the communal grounds
- Generous double bedroom complete with an en suite bathroom
- Bathroom fitted with a modern three-piece suite and shower over the bath
- Additional benefits include off-road parking, gas central heating, shared gardens, and neutral décor throughout







**Approximate total area<sup>(1)</sup>**  
448 ft<sup>2</sup>  
41.5 m<sup>2</sup>

(1) Excluding balconies and terraces

Calculations reference the RICS IPMS 3C standard. Measurements are approximate and not to scale. This floor plan is intended for illustration only.

GIRAFFE360

While we endeavour to make our sales particulars fair, accurate and reliable, they are only a general guide to the property and, accordingly, if there is any point, which is of particular importance to you, please contact the relevant office. The Agents have not tested any apparatus, equipment, fittings or services and so cannot verify they are in working order. The buyer is advised to obtain verification. Please note all the measurement details are approximate and should not be relied upon as exact. All plans, floor plans and maps are for guidance purposes only and are not to scale. Under no circumstances should they be relied upon as exact or for use in planning carpets and other such fixtures, fittings or furnishings. YOUR HOME IS AT RISK IF YOU DO NOT KEEP UP REPAYMENTS ON A MORTGAGE OR OTHER LOAN SECURED ON IT. 'A Life Assurance policy may be requested.' 'Written Quotations of credit terms available on request.'

Banner Cross  
T: 0114 268 3241  
E: [bannercross@saxtonmee.co.uk](mailto:bannercross@saxtonmee.co.uk)  
[www.saxtonmee.co.uk](http://www.saxtonmee.co.uk)

Hathersage  
T: 01433 650009  
E: [hathersage@saxtonmee.co.uk](mailto:hathersage@saxtonmee.co.uk)

Bakewell  
T: 01629 815307  
E: [bakewell@saxtonmee.co.uk](mailto:bakewell@saxtonmee.co.uk)

Matlock  
T: 01629 828250  
E: [matlock@saxtonmee.co.uk](mailto:matlock@saxtonmee.co.uk)