



Campden House, W8

£1,250,000



- Two Bedroom
- Fifth Floor With Lift
- Porter
- High Ceilings
- Communal Garden Access
- Leasehold





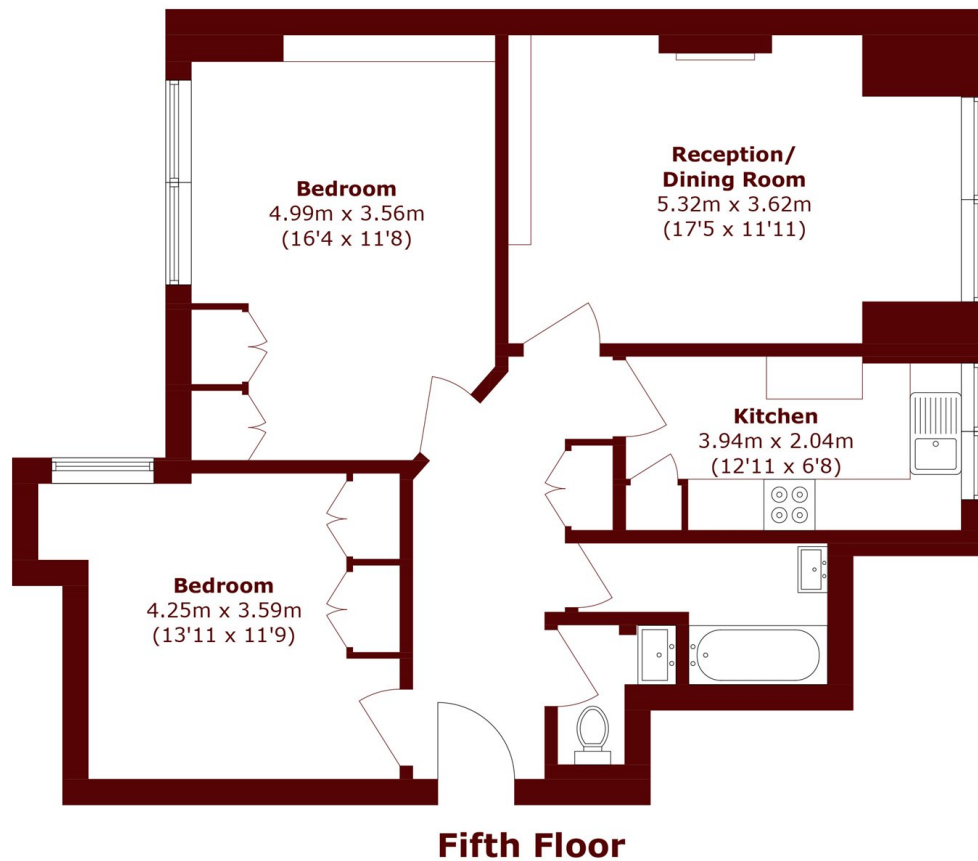
ABOUT THE PROPERTY

A bright and well-proportioned two, double bedroom apartment set on the fifth floor of a well-regarded period building with a porter, lift access and with large, sash windows this property is flooded with natural light.

Positioned on one of the highest points in Kensington and Chelsea, the property enjoys open views across the communal gardens and the London skyline. The apartment is well presented with well proportioned rooms throughout. The accommodation includes a fully fitted kitchen, a spacious reception room with ample space for dining, a bathroom and a separate guest cloakroom. Campden House is a discreet and attractive building benefiting from a resident porter and both passenger and goods lifts.

Sheffield Terrace is a quiet, sought after residential road that runs off Kensington Church Street, moments from a wealth of excellent shops and restaurants.





Total area (approx.): 74.5 sq. m (801.9 sq. ft)

Marsh & Parsons Kensington

9 Kensington Church Street,
London, W8 4LF
020 7368 4450